

LOC I-OOI 109.9	APP CRS 180°	Rwy ldg 9320
		TDZE 295
		Apt Elev 341

ILS or LOC RWY 18R

MEMPHIS INTL (MEM)

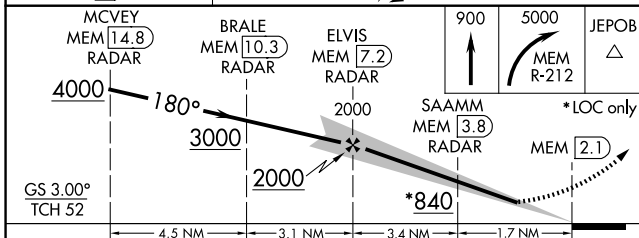
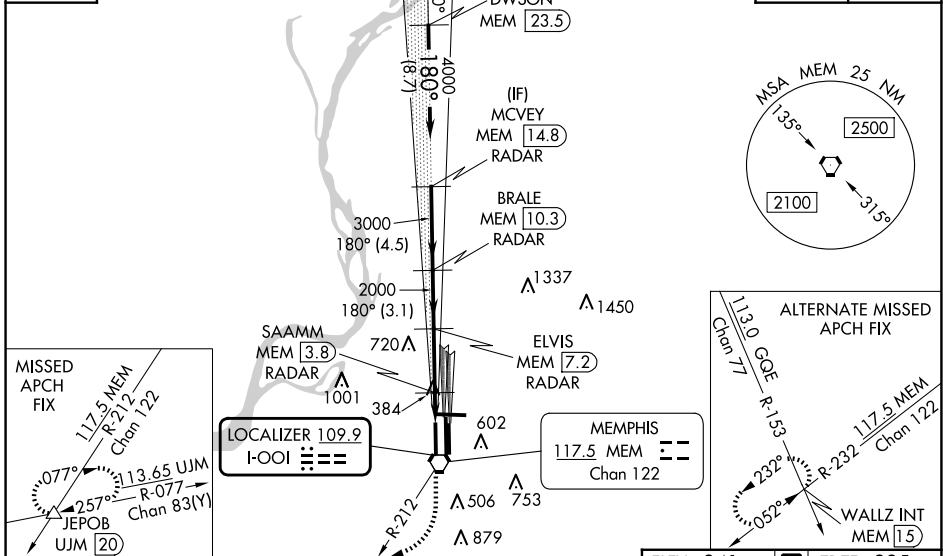
Radar required for procedure entry, DME or RADAR required.

⚠ Simultaneous approach authorized. For inop ALS, increase S-ILS 18R Cat E visibility to RVR 4000, S-LOC 18R Cat E visibility to 2 SM, SAAMM fix minimums, increase S-LOC 18R Cat E visibility to 1½ SM.

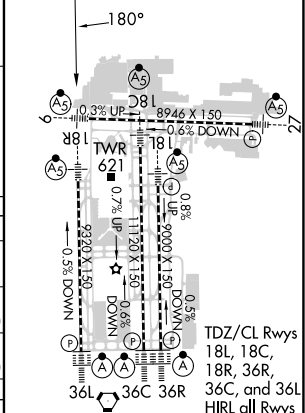
MALSR
MISSED APPROACH: Climb to 900 then climbing right turn to 5000 on MEM VORTAC R-212 to JEPOB INT/UJM 20 DME and hold.

MEMPHIS APP CON		MEMPHIS TOWER		GND CON	
119.1 291.6	(176°-355°)	(Rwy 9-27)	118.3 257.8	(Rwy 9-27)	121.0 379.2
125.8 338.3	(356°-175°)	(Rwys 18C-36C, 18L-36R)	119.7 257.8	(Rwys 18C-36C, 18L-36R)	121.9 379.2
		(Rwy 18R-36L)	128.425 257.8	(Rwy 18R-36L)	121.65 379.2

D-ATIS 127.75	1486 △	CLNC DEL 125.2	CPDLC
-------------------------	---------------	--------------------------	-------



ELEV 341 **D** TDZE 295



CATEGORY	A	B	C	D	E
S-ILS 18R	495/18 200 (200-½)				495/24 200 (200-½)
S-LOC 18R	840/24 545 (500-½)		840/50 545 (500-1)	840/60 545 (500-1¼)	840-1½ 545 (500-1½)
C CIRCLING	940-1 599 (600-1)		940-1½ 599 (600-1½)	1020-2¼ 679 (700-2¼)	1140-2¾ 799 (800-2¾)
SAAMM FIX MINIMUMS (DME OR RADAR REQUIRED)					
S-LOC 18R	700/24 405 (400-½)		700/40 405 (400-¾)		700/50 405 (400-1)
C CIRCLING	940-1 599 (600-1)		940-1½ 599 (600-1½)	1020-2¼ 679 (700-2¼)	1140-2¾ 799 (800-2¾)

FAF to MAP 5.1 NM					
Knots	60	90	120	150	180
Min:Sec	5:06	3:24	2:33	2:02	1:42

SE-1, 20 MAR 2025 to 17 APR 2025

SE-1, 20 MAR 2025 to 17 APR 2025