

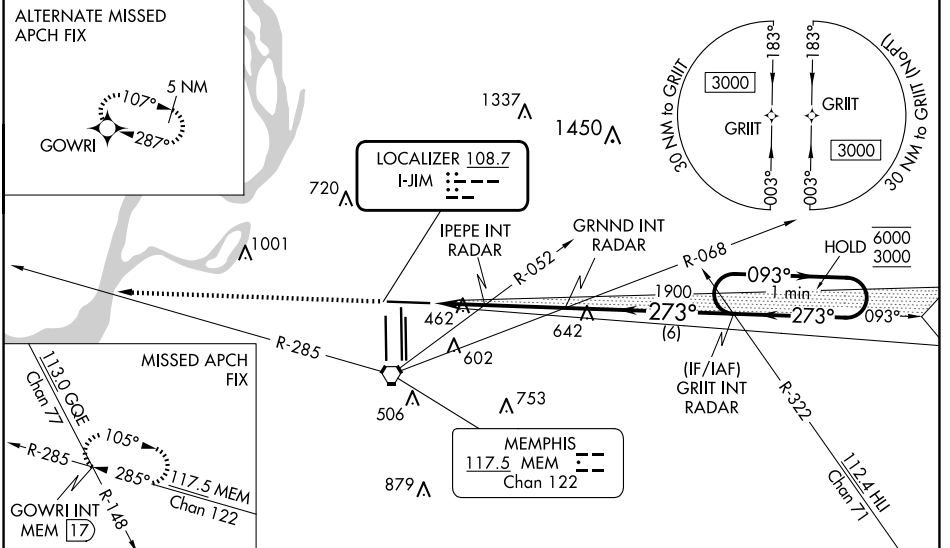
LOC I-JIM	APP CRS	Rwy Idg	8946
108.7	273°	TDZE	292
		Apt Elev	341

ILS or LOC RWY 27

MEMPHIS INTL (MEM)

RNAV 1-GPS or RADAR required for procedure entry.		MALSR 	MISSED APPROACH: Climb to 5000 and intercept MEM VORTAC R-285 to GOWRI INT/17 DME and hold, continue climb-in-hold to 5000.		
▼ For inop ALS, increase S-ILS Cat E visibility to RVR 4000, and S-LOC Cat E visibility to 2 SM, IPEPE fix minimums S-LOC Cat E visibility to 1/4 SM. ▲ *RVR 1800 authorized with use of FD or AP or HUD to DA.					
MEMPHIS APP CON 119.1 291.6 (176°-355°) 125.8 338.3 (356°-175°)		MEMPHIS TOWER (Rwy 9-27) 118.3 257.8 (Rwys 18C-36C, 18L-36R) 119.7 257.8 (Rwy 18R-36L) 128.425 257.8		GND CON (Rwy 9-27) 121.0 379.2 (Rwys 18C-36C, 18L-36R) 121.9 379.2 (Rwy 18R-36L) 121.65 379.2	

D-ATIS	CLNC DEL		CPDLC
127.75	125.2		



SE-1, 20 MAR 2025 to 17 APR 2025

SE-1, 20 MAR 2025 to 17 APR 2025

ELEV 341	D	TDZE 292	5000	VGSI and ILS glidepath not coincident (VGSI Angle 3.00/TCH 69).			One Minute Holding Pattern								
HIRL all Rwys TDZ/CL Rwys 18L, 18C, 18R, 36R, 36C, and 36L															
FAF to MAP 4.9 NM															
Knots	60	90	120	150	180										
Min:Sec	4:54	3:16	2:27	1:58	1:38										
		MEM R-285	GOWRI INT	GRND INT RADAR	GRIIT INT RADAR										
				980	1900										
				2 NM	2.9 NM										
				273°	093°										
				273°	273°										
				6000	3000										
				GS 3.00° TCH 54											
				CATEGORY											
				A		B		C		D		E			
				S-ILS 27 *		492/24					200 (200-1/2)				
				S-LOC 27		980/24		688 (700-1/2)		980-1 1/2		688 (700-1 1/2)			
				C CIRCLING		980-1		639 (700-1)		980-2		1020-2 1/4		1140-2 3/4	
						639 (700-2)		679 (700-2 1/4)		799 (800-2 3/4)					
						IPEPE FIX MINIMUMS (DUAL VOR RECEIVERS OR RADAR REQUIRED)									
				S-LOC 27		720/24		428 (400-1/2)		720/40		428 (400-3/4)			
				C CIRCLING		940-1		599 (600-1)		940-1 1/2		1020-2 1/4		1140-2 3/4	
						599 (600-1 1/2)		679 (700-2 1/4)		799 (800-2 3/4)					