

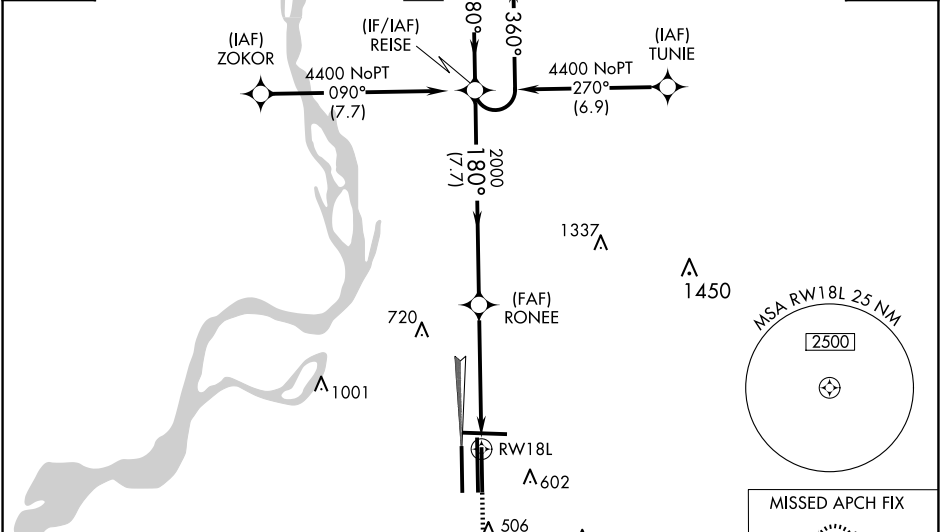
|  |                        |                             |   |
|--|------------------------|-----------------------------|---|
| WAAS<br>CH <b>53307</b><br><b>W18B</b> | APP CRS<br><b>180°</b> | Rwy Idg<br>TDZE<br>Apt Elev | <b>9000</b><br><b>301</b><br><b>341</b> |
|--|------------------------|-----------------------------|---|

# RNAV (GPS) Z RWY 18L

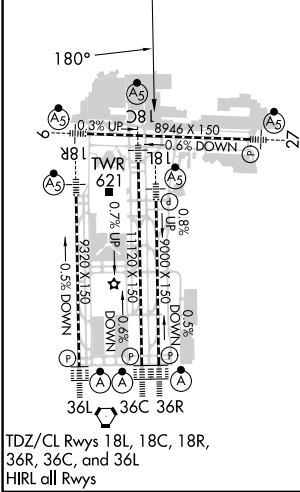
MEMPHIS INTL (MEM)

|  |   |  |              |
|--|---|--|--------------|
| RNP APCH - GPS   | MALSR   | MISSED APPROACH: Climb to 900 then climbing left turn to 5000 direct KEEZE and hold, continue climb-in-hold to 5000. |              |
| <p>Simultaneous approach authorized. For uncompensated Baro-VNAV systems, LNAV/VNAV NA below -15°C or above 54°C. LNAV procedure NA during simultaneous operations. Use of FD or AP required during simultaneous operations. For inop ALS, increase LNAV/VNAV all Cats visibility to 1½ SM and LNAV Cat C/D visibility to 1½ SM.</p> |   |  |              |
| MEMPHIS APP CON  | MEMPHIS TOWER   | GND CON  | CLNC DEL     |
| <b>119.1 291.6</b> (176°-355°)   | (Rwy 9-27) <b>118.3 257.8</b><br>(Rwys 18C-36C, 18L-36R) <b>119.7 257.8</b><br>(Rwy 18R-36L) <b>128.425 257.8</b> | (Rwy 9-27) <b>121.0 379.2</b><br>(Rwys 18C-36C, 18L-36R) <b>121.9 379.2</b><br>(Rwy 18R-36L) <b>121.65 379.2</b>     | <b>125.2</b> |
| <b>125.8 338.3</b> (356°-175°)   |   |  |              |

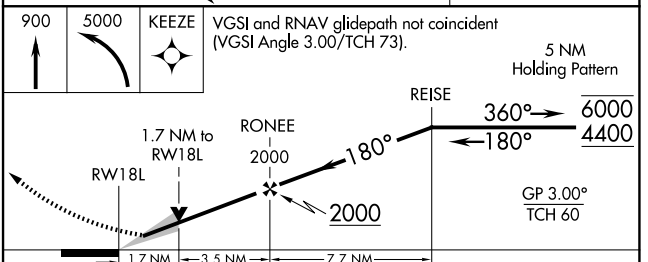
|                         |       |
|-------------------------|-------|
| D-ATIS<br><b>127.75</b> | CPDLC |
|-------------------------|-------|



|          |          |          |
|----------|----------|----------|
| ELEV 341 | <b>D</b> | TDZE 301 |
|----------|----------|----------|



MEMPHIS, TENNESSEE  
Amdt 2E 07OCT21



|                   |        |             |                        |                         |
|-------------------|--------|-------------|------------------------|-------------------------|
| CATEGORY          | A      | B           | C                      | D                       |
| LPV DA            |        | 557/18      | 256 (300-½)            |                         |
| LNAV/VNAV DA      |        | 874-1¼      | 573 (600-1¼)           |                         |
| LNAV MDA          | 880/24 | 579 (600-½) | 880-1¼                 | 579 (600-1¼)            |
| <b>C</b> CIRCLING | 940-1  | 599 (600-1) | 940-1½<br>599 (600-1½) | 1020-2¼<br>679 (700-2¼) |

# RNAV (GPS) Z RWY 18L

SE-1, 20 MAR 2025 to 17 APR 2025

SE-1, 20 MAR 2025 to 17 APR 2025