

(HSTIN6.HSTIN) 22363

MINNEAPOLIS-ST PAUL INTL/WOLD-CHAMBERLAIN (MSP)

HESTIN SIX DEPARTURE (RNAV)

AL-264 (FAA)

MINNEAPOLIS, MINNESOTA

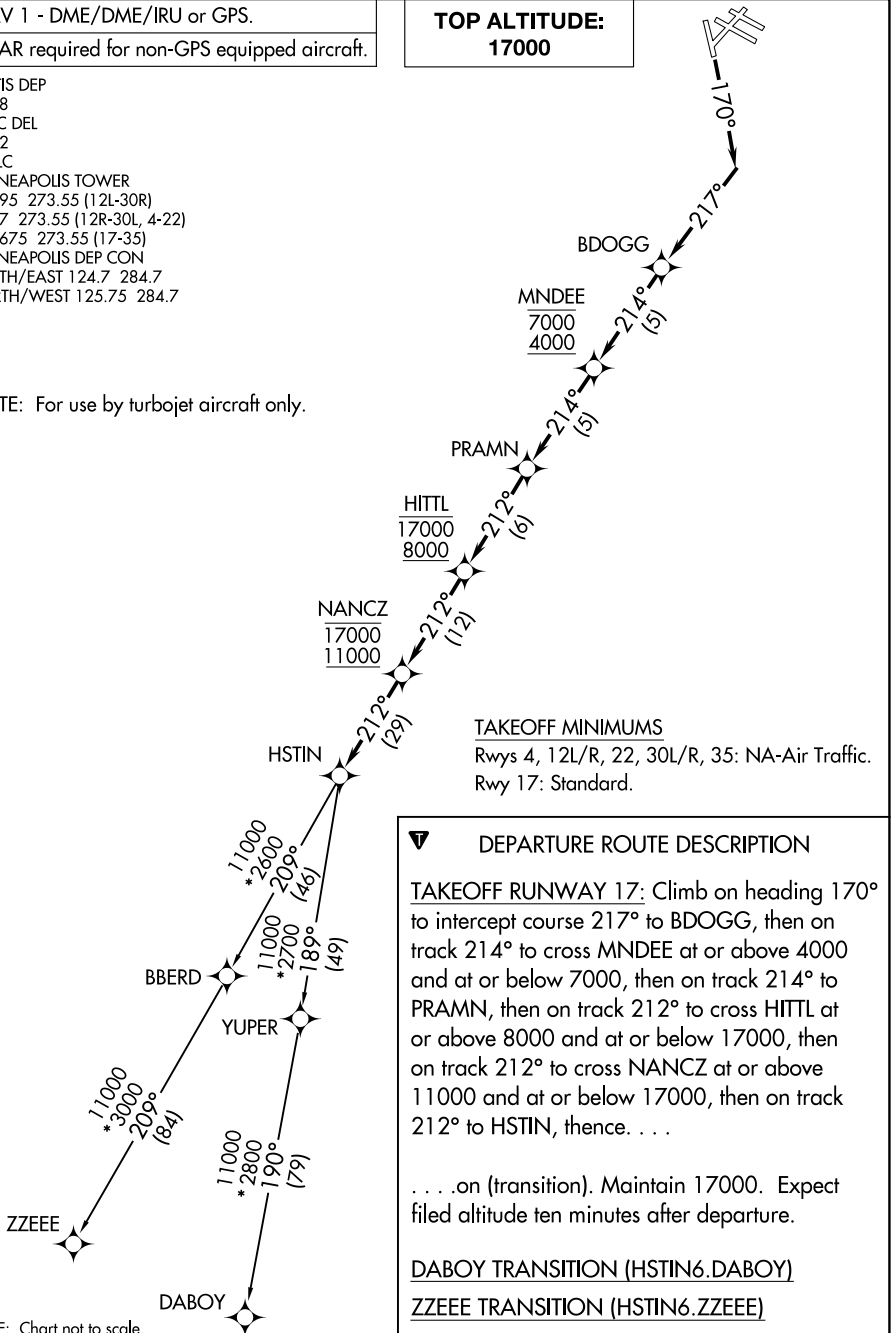
RNAV 1 - DME/DME/IRU or GPS.

RADAR required for non-GPS equipped aircraft.

D-ATIS DEP
 120.8
 CLNC DEL
 133.2
 CPDLC
 MINNEAPOLIS TOWER
 123.95 273.55 (12L-30R)
 126.7 273.55 (12R-30L, 4-22)
 123.675 273.55 (17-35)
 MINNEAPOLIS DEP CON
 SOUTH/EAST 124.7 284.7
 NORTH/WEST 125.75 284.7

NOTE: For use by turbojet aircraft only.

TOP ALTITUDE:
17000



TAKEOFF MINIMUMS

Rwys 4, 12L/R, 22, 30L/R, 35: NA-Air Traffic.
 Rwy 17: Standard.

DEPARTURE ROUTE DESCRIPTION

TAKEOFF RUNWAY 17: Climb on heading 170° to intercept course 217° to BDOGG, then on track 214° to cross MNDEE at or above 4000 and at or below 7000, then on track 214° to PRAMN, then on track 212° to cross HITTL at or above 8000 and at or below 17000, then on track 212° to cross NANCZ at or above 11000 and at or below 17000, then on track 212° to HSTIN, thence. . . .

. . . .on (transition). Maintain 17000. Expect filed altitude ten minutes after departure.

DABOY TRANSITION (HSTIN6.DABOY)

ZEEEE TRANSITION (HSTIN6.ZEEEE)

NOTE: Chart not to scale.

HESTIN SIX DEPARTURE (RNAV)

MINNEAPOLIS, MINNESOTA

(HSTIN6.HSTIN) 29DEC22

MINNEAPOLIS-ST PAUL INTL/WOLD-CHAMBERLAIN (MSP)

NC-1, 20 MAR 2025 to 17 APR 2025

NC-1, 20 MAR 2025 to 17 APR 2025