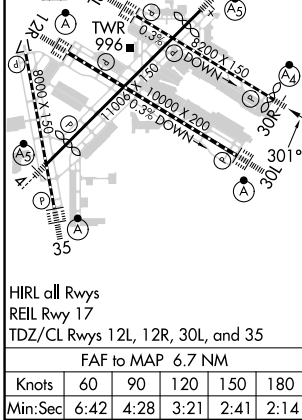
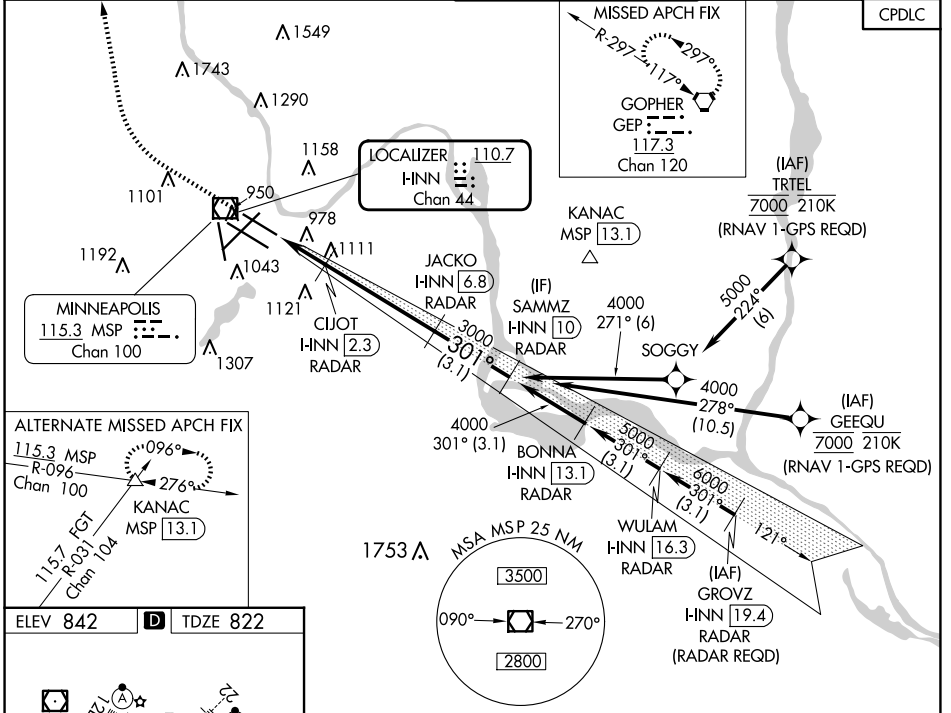


LOC/DME I-HINN 110.7 Chan 44	APP CRS 301°	Rwy Idg TDZE Apt Elev	8000 822 842
--	------------------------	-----------------------------	---

MINNEAPOLIS-ST PAUL INTL/WOLD-CHAMBERLAIN (MSP)

ILS or LOC RWY 30R

⚠ Simultaneous approaches authorized with Rwy 30L and ILS V RWY 35 (CONVERGING). For inop ALS, increase S-LOC 30R Cat D/E visibility to 1 3/8 SM. Inop table does not apply to S-ILS 30R all Cats. DME or RADAR required.	MAJLF 	MISSED APPROACH: Climb to 1300, then climbing right turn to 3000 direct GEP VORTAC and hold.	CLNC DEL 133.2



1300	3000	GEP	VGSI and ILS glidepath not coincident (VGSI Angle 3.00/TCH 71).
*LOC only		CIJOT I-HINN [2.3] RADAR	JACKO I-HINN [6.8] RADAR
HINN [0.2] *I-HINN [1.5]		Sammz I-HINN [10] RADAR	
1520*		3000	
1.3 NM		0.8 NM	
4.6 NM		3.1 NM	
CATEGORY	A	B	C
S-ILS 30R	1072/40 250 (300-3/4)		
S-LOC 30R	1320/40 498 (500-3/4)	1320/60 498 (500-1 1/4)	
C CIRCLING	1360-1 518 (600-1)	1460-1 1/4 1660-2 3/4	1800-3 618 (700-1 1/4) 818 (900-2 3/4) 958 (1000-3)

NC-1, 20 MAR 2025 to 17 APR 2025

NC-1, 20 MAR 2025 to 17 APR 2025