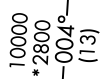
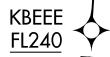
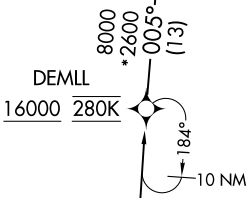
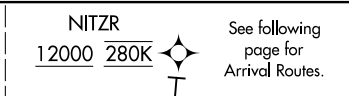


NITZR THREE ARRIVAL (RNAV) Transition Routes AL-264 (FAA) MINNEAPOLIS, MINNESOTA

MINNEAPOLIS APP CON  
135.475 335.5  
D-ATIS ARR  
135.35 239.275



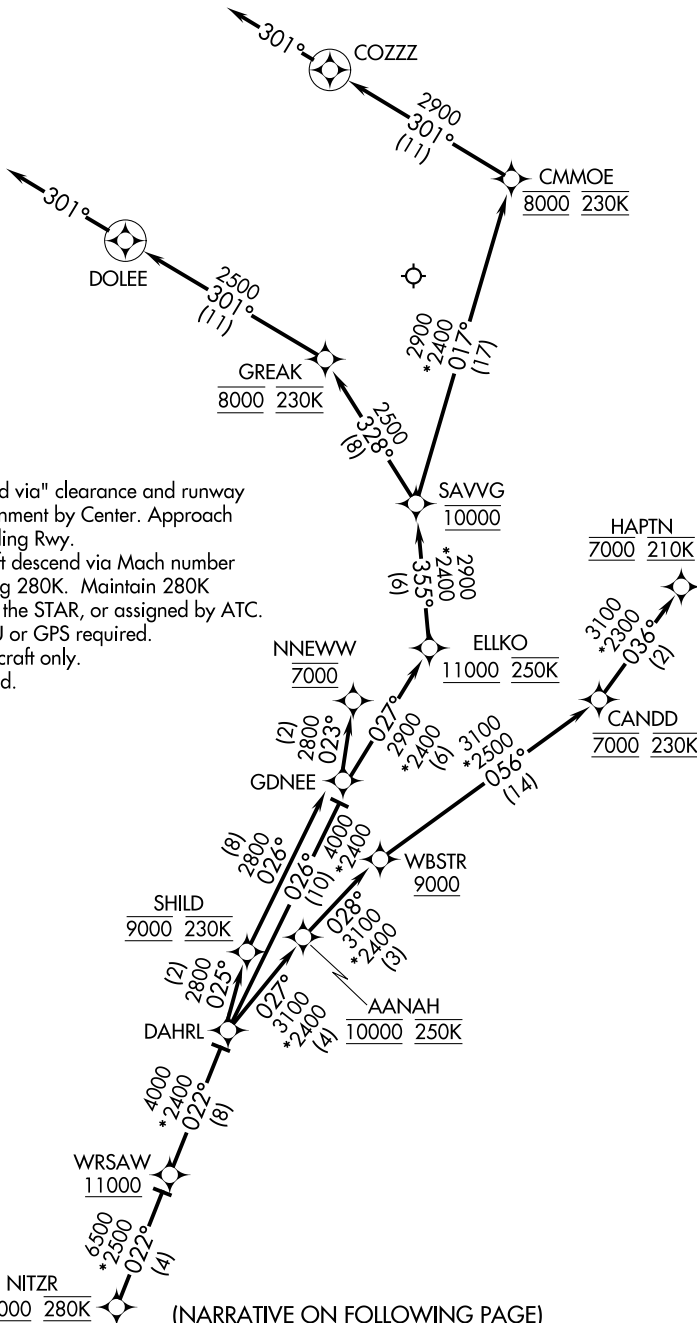
- NOTE: Expect "descend via" clearance and runway transition assignment by Center. Approach will assign landing Rwy.
- NOTE: Turbojet aircraft descend via Mach number until intercepting 280K. Maintain 280K until slowed by the STAR, or assigned by ATC.
- NOTE: DME/DME/IRU or GPS required.
- NOTE: For turbojet aircraft only.
- NOTE: RADAR required.
- NOTE: RNAV 1.

(CONTINUED ON FOLLOWING PAGE)

- DEMLL TRANSITION (DEMLL.NITZR3)
- ROKKK TRANSITION (ROKKK.NITZR3)
- RRAZZ TRANSITION (RRAZZ.NITZR3)

NOTE: Chart not to scale.

MINNEAPOLIS APP CON  
135.475 335.5  
D-ATIS ARR  
135.35 239.275



NOTE: Expect "descend via" clearance and runway transition assignment by Center. Approach will assign landing Rwy.

NOTE: Turbojet aircraft descend via Mach number until intercepting 280K. Maintain 280K until slowed by the STAR, or assigned by ATC.

NOTE: DME/DME/IRU or GPS required.

NOTE: For turbojet aircraft only.

NOTE: RADAR required.

NOTE: RNAV 1.

NOTE: Chart not to scale.

(NARRATIVE ON FOLLOWING PAGE)

NC-1, 20 MAR 2025 to 17 APR 2025

NC-1, 20 MAR 2025 to 17 APR 2025

ARRIVAL ROUTE DESCRIPTION

From NITZR on track 022° to cross WRS AW at or above 11000, then on track 022° to DAHRL.

LANDING RUNWAYS 4, 12R, 17, 22: From DAHRL on track 026° to GDNEE, then on track 027° to cross ELLKO at or above 11000 and at 250K, then on track 355° to cross SAVVG at 10000, then on track 328° to cross GREAK at 8000 and at 230K, then on track 301° to DOLEE, then on track 301°. Expect RADAR vectors to final approach course.

LANDING RUNWAY 12L: From DAHRL on track 026° to GDNEE, then on track 027° to cross ELLKO at or above 11000 and at 250K, then on track 355° to cross SAVVG at 10000, then on track 017° to cross CMMOE at 8000 and at 230K, then on track 301° to COZZZ, then on track 301°. Expect RADAR vectors to final approach course.

LANDING RUNWAYS 30L/R: From DAHRL on track 027° to cross AANA H at 10000 and at 250K, then on track 028° to cross WBSTR at or above 9000, then on track 056° to cross CANDD at 7000 and at 230K, then on track 036° to cross HAPT N at 7000 and at 210K. Expect RNAV (RNP), RNAV (GPS), or ILS approach or RADAR vectors to final approach course.

LANDING RUNWAY 35: From DAHRL on track 025° to cross SHILD at 9000 and at 230K, then on track 026° to GDNEE, then on track 023° to cross NNEW W at 7000. Expect RNAV (RNP), RNAV (GPS), or ILS approach or RADAR vectors to final approach course.

NC-1, 20 MAR 2025 to 17 APR 2025

NC-1, 20 MAR 2025 to 17 APR 2025