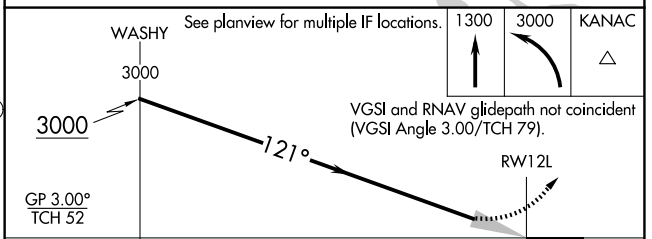
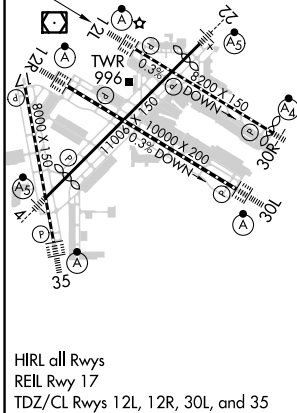
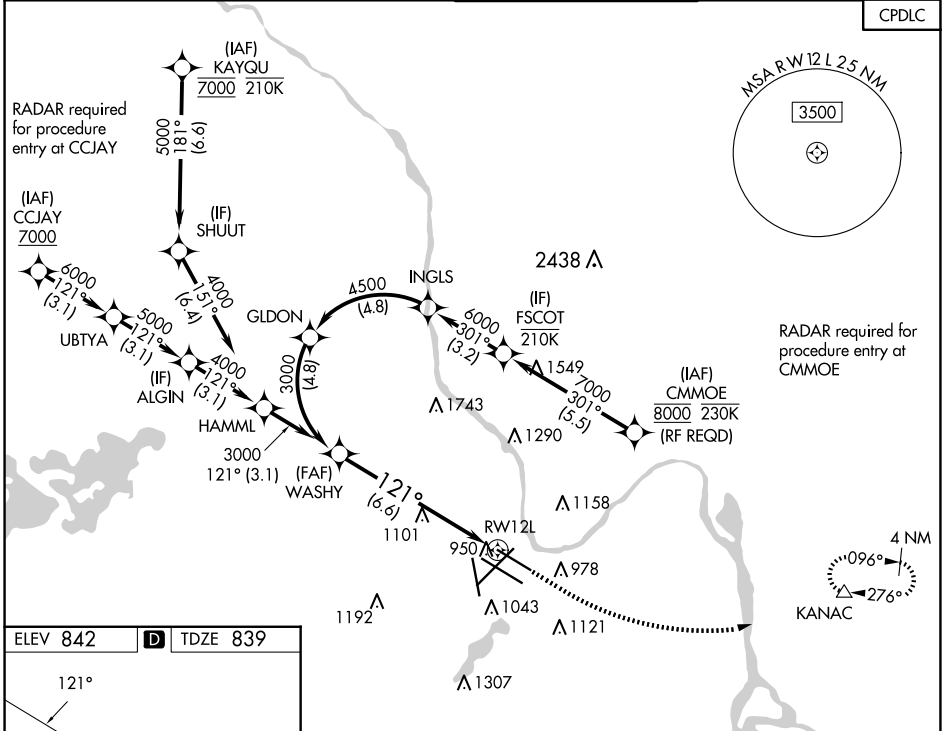


APP CRS	Rwy Idg	<b>7620</b>
<b>121°</b>	TDZE	<b>839</b>
	Apt Elev	<b>842</b>

# RNAV (RNP) Y RWY 12L

MINNEAPOLIS-ST PAUL INTL/WOLD-CHAMBERLAIN (MSP)

<b>▽</b> For uncompensated Baro-VNAV systems, procedure NA below -20°C (-4°F) or above 54°C (130°F). GPS required.	MINNEAPOLIS APP CON ARR <b>135.35 239.275</b> DEP <b>120.8</b>		MINNEAPOLIS TOWER <b>123.675 273.55</b> (17-35) <b>123.95 273.55</b> (12L-30R) <b>126.7 273.55</b> (12R-30L, 4-22)		GND CON <b>N 121.8 348.6</b> <b>S 121.9 348.6</b> <b>W 127.925 348.6</b>	CLNC DEL <b>133.2</b>	
	D-ATIS ARR <b>135.35 239.275</b> DEP <b>120.8</b>		MINNEAPOLIS APP CON (Rwy 35) <b>119.3 335.65</b> (12L-30R, 4-22, 17) <b>126.95 335.65</b> (12R-30L)		GND CON <b>N 121.8 348.6</b> <b>S 121.9 348.6</b> <b>W 127.925 348.6</b>		CLNC DEL <b>133.2</b>
							CPDLC



GP 3.00°	TCH 52				
CATEGORY		A	B	C	D
RNP 0.15 DA		1150/24 311 (400-½)			
RNP 0.30 DA		1241/45 402 (400-⅔)			

**AUTHORIZATION REQUIRED**

MINNEAPOLIS-ST PAUL INTL/WOLD-CHAMBERLAIN (MSP)  
 44°53'N-93°13'W  
**RNAV (RNP) Y RWY 12L**

NC-1, 20 MAR 2025 to 17 APR 2025

NC-1, 20 MAR 2025 to 17 APR 2025