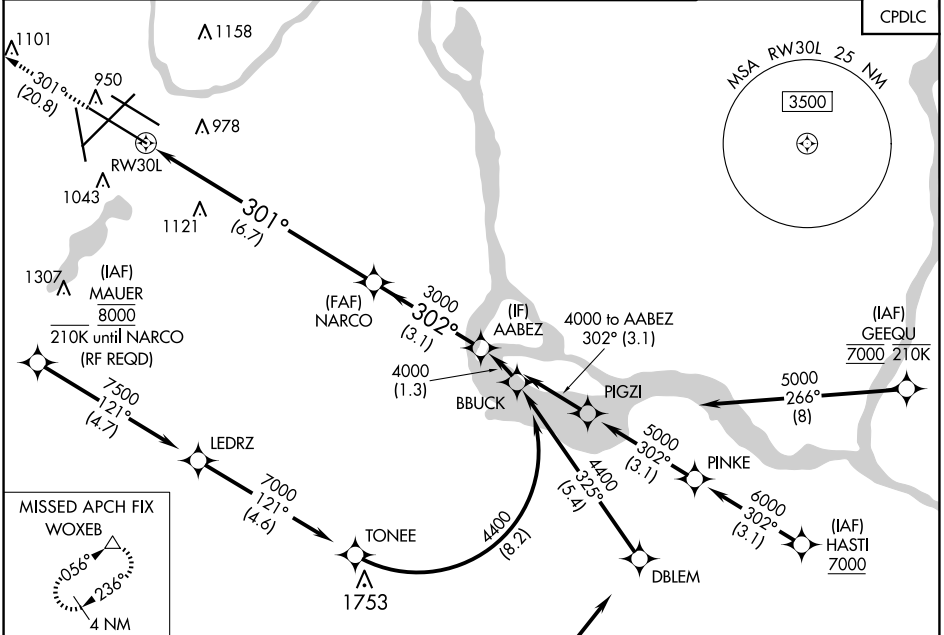


APP CRS <b>301°</b>	Rwy Idg <b>10000</b> TDZE <b>823</b> Apt Elev <b>842</b>
------------------------	--

# RNAV (RNP) Y RWY 30L

MINNEAPOLIS-ST PAUL INTL/WOLD-CHAMBERLAIN (MSP)

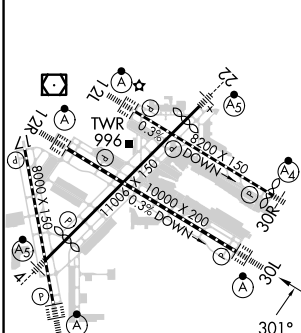
<b>▽</b> For uncompensated Baro-VNAV systems, procedure NA below -19°C (-2°F) or above 54°C (130°F). GPS required. Simultaneous approaches authorized with Rwy 30R and ILS V RWY 35 (CONVERGING).	ALSF-2 	MISSED APPROACH: Climb to 3000 on track 301° to WOXEB and hold.		
		D-ATIS ARR <b>135.35</b> 239.275 DEP <b>120.8</b>	MINNEAPOLIS APP CON <b>118.725 335.65</b> (Rwy 35) <b>119.3 335.65</b> (12L-30R, 4-22, 17) <b>126.95 335.65</b> (12R-30L)	MINNEAPOLIS TOWER <b>123.675 273.55</b> (17-35) <b>123.95 273.55</b> (12L-30R) <b>126.7 273.55</b> (12R-30L, 4-22)



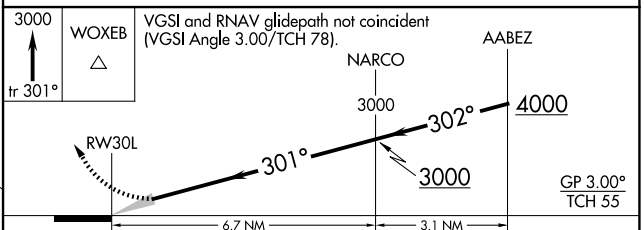
NC-1, 20 MAR 2025 to 17 APR 2025

NC-1, 20 MAR 2025 to 17 APR 2025

ELEV 842	<b>D</b>	TDZE 823
----------	----------	----------



HIRL all Rwys  
 REIL Rwy 17  
 TDZ/CL Rwys 12L, 12R, 30L, and 35



CATEGORY	A	B	C	D
RNP 0.30 DA	1150/30 327 (400- $\frac{1}{8}$ )			

## AUTHORIZATION REQUIRED