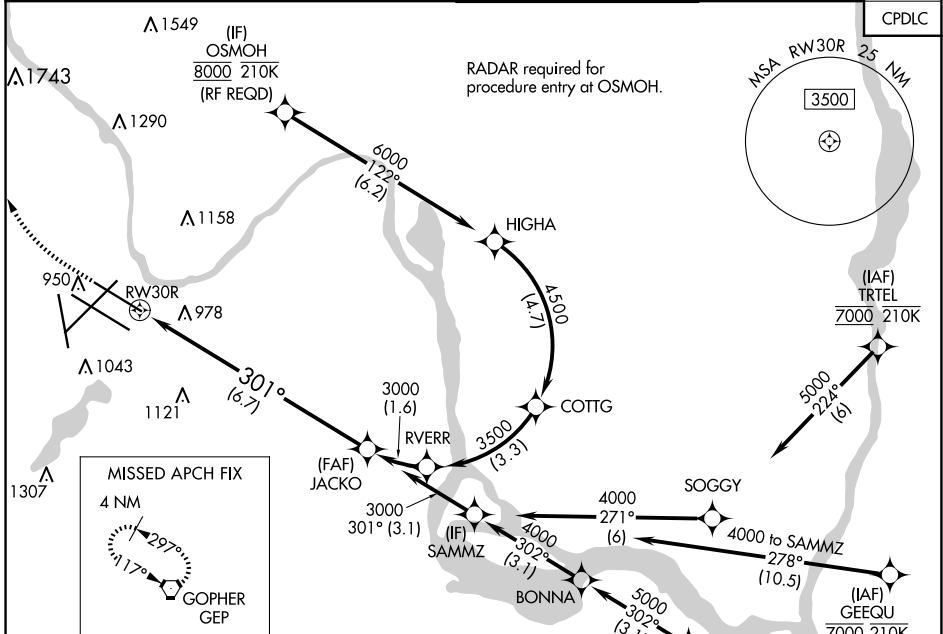


APP CRS	Rwy Idg	8000
301°	TDZE	822
	Apt Elev	842

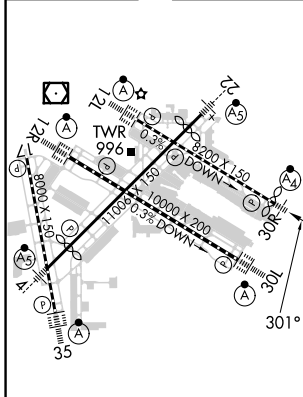
RNAV (RNP) Y RWY 30R

MINNEAPOLIS-ST PAUL INTL/WOLD-CHAMBERLAIN (MSP)

<p>▼ For uncompensated Baro-VNAV systems, procedure NA below -1°C (-2°F) or above 54°C (130°F). Simultaneous approach authorized with Rwy 30L and ILS V RWY 35 (CONVERGING). GPS required. For inop ALS, increase RNP 0.15 all Cats visibility to RVR 4500 and RNP 0.30 Cat D visibility to 1½ SM.</p>	<p>MALSF</p>	<p>MISSED APPROACH: Climb to 1300 then climbing right turn to 3000 direct GEP VORTAC and hold.</p>	
		<p>D-ATIS</p> <p>ARR 135.35 239.275</p> <p>DEP 120.8</p>	<p>MINNEAPOLIS APP CON</p> <p>118.725 335.65 (Rwy 35)</p> <p>119.3 335.65 (12L-30R, 4-22, 17)</p> <p>126.95 335.65 (12R-30L)</p>



ELEV 842	D	TDZE 822
-----------------	----------	-----------------



1300	3000	GEP	VGSI and RNAV glidepath not coincident (VGSI Angle 3.00/TCH 71). See planview for multiple IF locations.	JACKO	3000
					GP 3.00° TCH 55
6.7 NM					

CATEGORY	A	B	C	D
RNP 0.15 DA		1097/40	275 (300-¾)	
RNP 0.30 DA		1298-1½	476 (500-1½)	

AUTHORIZATION REQUIRED

NC-1, 20 MAR 2025 to 17 APR 2025

NC-1, 20 MAR 2025 to 17 APR 2025