

WAAS CH <b>90128</b> <b>W35A</b>	APP CRS <b>350°</b>	Rwy ldg TDZE Apt Elev	<b>8000</b> <b>834</b> <b>842</b>
--	------------------------	-----------------------------	---

# RNAV (GPS) Z RWY 35

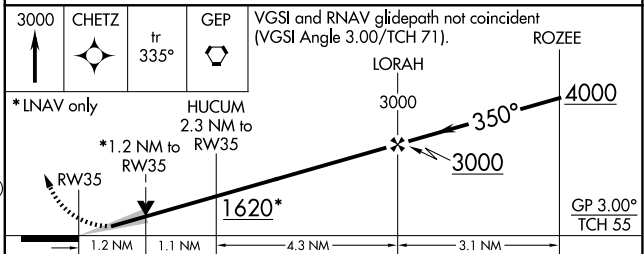
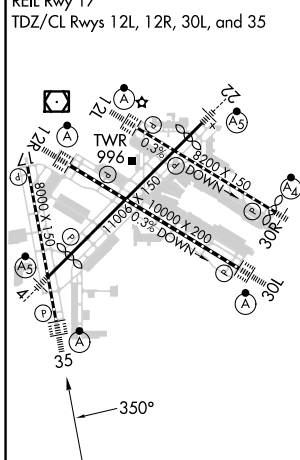
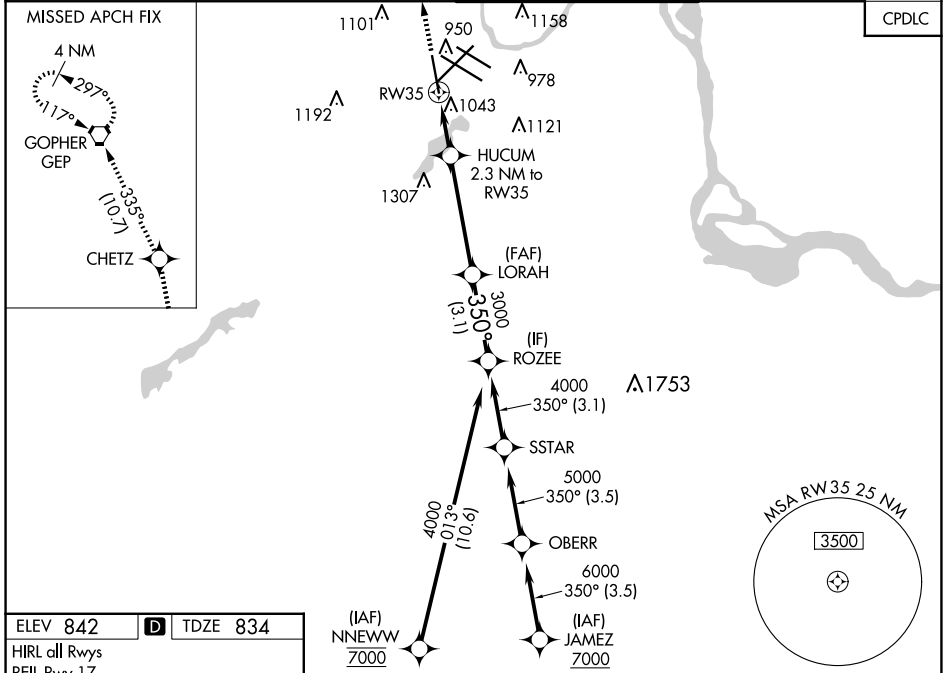
MINNEAPOLIS-ST PAUL INTL/WOLD-CHAMBERLAIN (MSP)

**⚠** For uncompensated Baro-VNAV systems, LNAV/VNAV NA below -19°C (-2°F) or above 54°C (130°F). DME/DME RNP-0.3 NA. For inop ALS, increase LPV Cat E visibility to RVR 4000, LNAV/VNAV Cat E visibility to 1¼ SM and LNAV Cts C/D/E visibility to 1¾ SM.

**ALS F-2**

**MISSED APPROACH:** Climb to 3000 direct CHETZ and on track 335° to GEP VORTAC and hold.

D-ATIS ARR <b>135.35 239.275</b> DEP <b>120.8</b>	MINNEAPOLIS APP CON <b>118.725 335.65</b> (Rwy 35) <b>119.3 335.65</b> (12L-30R, 4-22, 17) <b>126.95 335.65</b> (12R-30L)	MINNEAPOLIS TOWER <b>123.675 273.55</b> (17-35) <b>123.95 273.55</b> (12L-30R) <b>126.7 273.55</b> (12R-30L, 4-22)	GND CON <b>N 121.8 348.6</b> <b>S 121.9 348.6</b> <b>W 127.925 348.6</b>	CLNC DEL <b>133.2</b>
---	--	---	---	--------------------------



CATEGORY	A	B	C	D	E
LPV DA	1034/18 200 (200-½)				
LNAV/VNAV DA	1204/40 370 (400-¾)				
LNAV MDA	1300/24	466 (500-½)	1300/50 466 (500-1)		
<b>C</b> CIRCLING	1360-1	518 (600-1)	1460-1¾ 618 (700-1¾)	1660-2¾ 818 (900-2¾)	1800-3 958 (1000-3)