

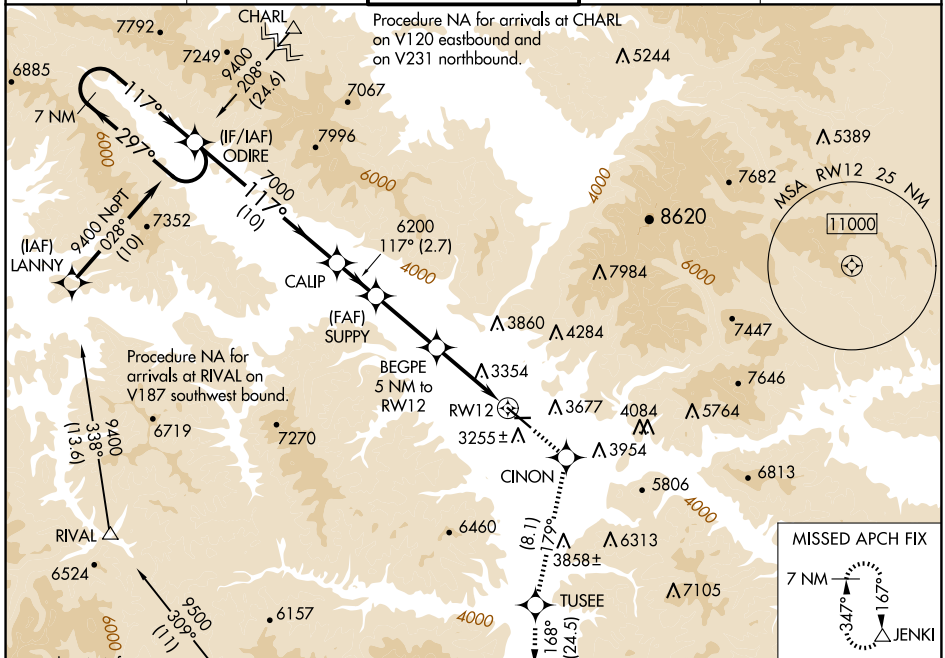
WAAS CH 65715 W12B	APP CRS 117°	Rwy Idg TDZE Apt Elev	9501 3200 3206
----------------------------------------	------------------------	-----------------------------	-------------------------------------------

RNAV (GPS) Y RWY 12

MISSOULA MONTANA (MISO)

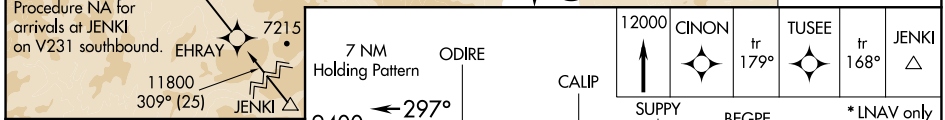
RNP APCH.	MALS R	MISSED APPROACH: (Do not exceed 200K until CINON) Climb to 12000 direct CINON and on track 179° to TUSEE and on track 168° to JENKI and hold, continue climb-in-hold to 12000. ## Missed approach requires minimum climb of 325 feet per NM to 7700.
<p>⚠ Circling NA for Cats C and D northeast of Rwy 12-30. Inop table does not apply to LNAV # Cats C/D. Inop table does</p> <p>❄ -12°C not apply to LPV † all Cats. **RVR 1800 authorized with use of FD or AP or HUD to DA.</p>		

ATIS 126.65	SPOKANE APP CON * 124.9 298.95	MISSOULA TOWER * 118.4 (CTAF) 0 377.175	GND CON 121.9	UNICOM 122.95
-----------------------	------------------------------------------	---------------------------------------------------	-------------------------	-------------------------

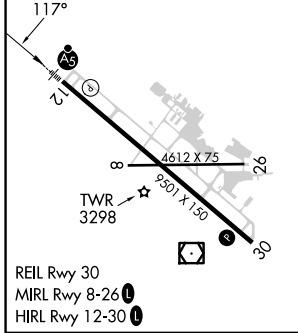


NW-1, 20 MAR 2025 to 17 APR 2025

NW-1, 20 MAR 2025 to 17 APR 2025



ELEV 3206	D	TDZE 3200
-----------	---	-----------



7 NM Holding Pattern	ODIRE	12000 CINON	tr 179°	TUSEE	tr 168°	JENKI
9400	← 297°	↑	→	⬇	→	△
GP 3.00° TCH 55	117° →	SUPPLY 6200	BEGPE 5 NM to RWY12	*1.2 NM to RWY12	RWY12	RWY12
		6200	*4840			
		10 NM	2.7 NM	4.3 NM	3.8 NM	1.2 NM

CATEGORY	A	B	C	D
LPV DA ##		3400/24	200 (200-1/2)	
LPV DA †		4229-4	1029 (1100-4)	
LNAV MDA ##		3640/24	440 (500-1/2)	3640/40 440 (500-3/4)
LNAV MDA #		4520/40 1320 (1400-3/4)	4520/55 1320 (1400-1)	4520-3 1320 (1400-3)
CIRCLING		4520-1 1/4 1314 (1400-1/4)	4700-1 1/2 1494 (1500-1/2)	4700-3 1494 (1500-3)
				5140-3 1934 (2000-3)