

(VICTO1.VICTO) 23278

VICTO ONE DEPARTURE (RNAV)

AL-266 (FAA)

MISSOULA MONTANA (MSO)
MISSOULA, MONTANA

RNAV 1 - GPS.

RADAR required

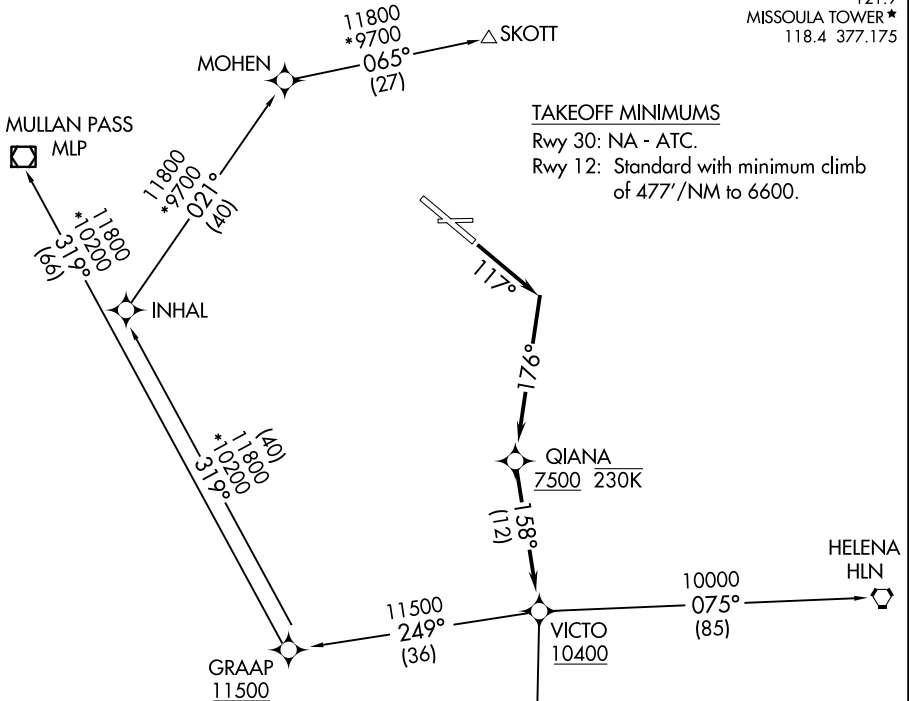
**TOP ALTITUDE:
ASSIGNED BY ATC**

SPOKANE DEP CON *
124.9 298.95
SALT LAKE CITY CENTER
127.075 244.875
ATIS
126.65
GND CON
121.9
MISSOULA TOWER *
118.4 377.175

TAKEOFF MINIMUMS

Rwy 30: NA - ATC.

Rwy 12: Standard with minimum climb
of 477'/NM to 6600.



NW-1, 20 MAR 2025 to 17 APR 2025

NW-1, 20 MAR 2025 to 17 APR 2025

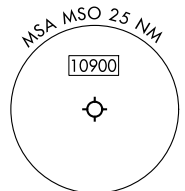
DEPARTURE ROUTE DESCRIPTION

TAKEOFF RUNWAY 12: Climb on heading 117° to intercept course 176° to cross QIANA at or above 7500 and at or below 230K, then on track 158° to cross VICTO at or above 10400, thence. . . .

. . . . (Transition), maintain ATC assigned altitude, expect filed altitude 10 minutes after departure.

- HELENA TRANSITION (VICTO1.HLN)
- MULLAN PASS TRANSITION (VICTO1.MLP)
- SALMON TRANSITION (VICTO1.LKT)
- SKOTT TRANSITION (VICTO1.SKOTT)

NOTE: Chart not to scale.



VICTO ONE DEPARTURE (RNAV)

(VICTO1.VICTO) 05OCT23

MISSOULA, MONTANA
MISSOULA MONTANA (MSO)