

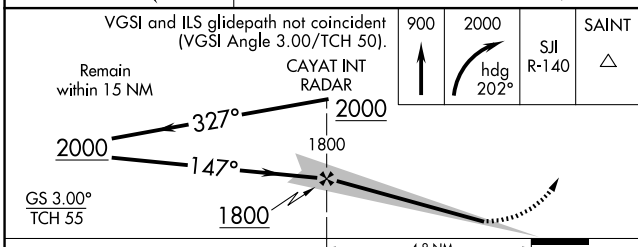
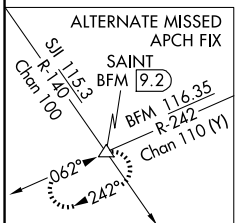
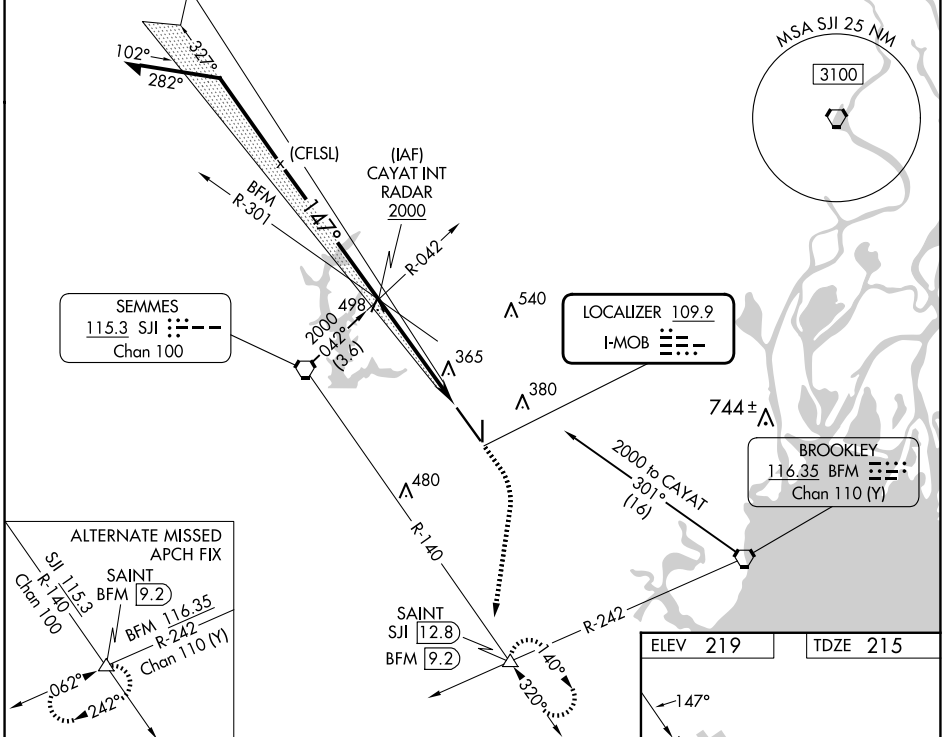
LOC I-MOB 109.9	APP CRS 147°	Rwy Idg 8502
		TDZE 215
		Apt Elev 219

ILS or LOC RWY 15

MOBILE RGNL (MOB)

<p>⚠ For inop ALS, increase S-ILS 15 Cat E visibility to RVR 4000 and S-LOC 15 Cats C/D/E visibility to 1½ mile.</p> <p>⚠ *RVR 1800 authorized with use of FD or AP or HUD to DA.</p>	<p>MALSR</p>	<p>MISSED APPROACH: Climb to 900 then climbing right turn to 2000 on heading 202° then on SJI VORTAC R-140 to SAINT/SJI 12.8 DME and hold.</p>
---	---------------------	---

ATIS 124.75 257.85	MOBILE APP CON ★ 118.5 269.3	MOBILE TOWER ★ 118.3 (CTAF) 0 239.0	GND CON 121.9 348.6	CLNC DEL 119.85	UNICOM 122.95
------------------------------	--	---	-------------------------------	---------------------------	-------------------------



ELEV 219	TDZE 215
----------	----------

8502 X 150
TWR 348
4376 X 150
36ft
35'

FAF to MAP 4.8 NM
Knots: 60 90 120 150 180
Min:Sec: 4:48 3:12 2:24 1:55 1:36

MIRL Rwy 18-36
HIRL Rwy 15-33

CATEGORY	A	B	C	D	E
S-ILS 15*	415/24 200 (200-½)				
S-LOC 15	700/24	485 (500-½)	700/50		485 (500-1)
CIRCLING	700-1½	481 (500-1½)	740-1½ 521 (600-1½)	780-2 561 (600-2)	NA

SE-4, 20 MAR 2025 to 17 APR 2025