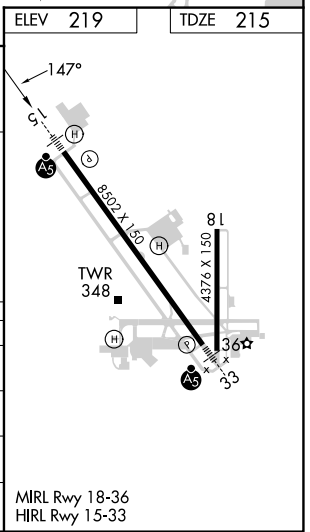
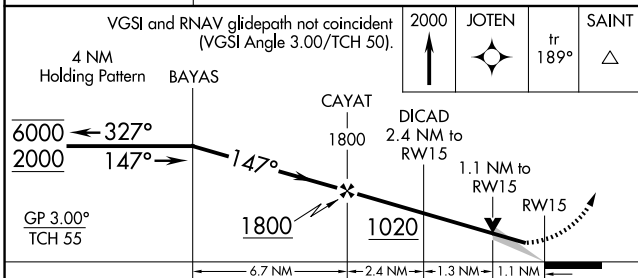
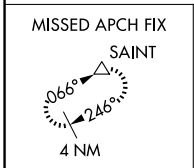
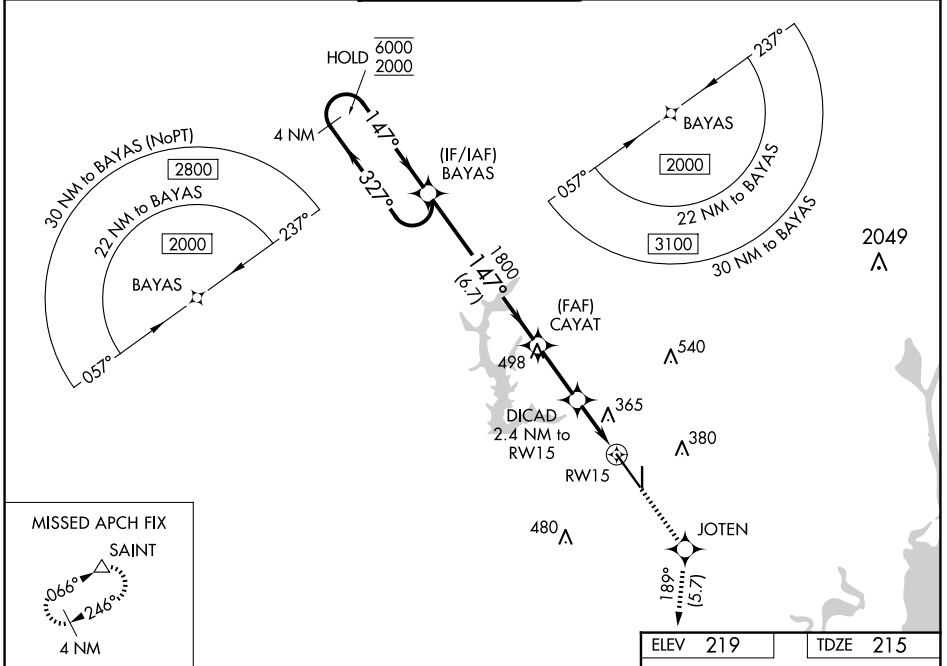


| | | | |
|--|------------------------|-----------------------------|---|
| WAAS CH 97506 W15A | APP CRS 147° | Rwy Idg TDZE Apt Elev | 8502 215 219 |
|--|------------------------|-----------------------------|---|

RNAV (GPS) RWY 15

MOBILE RGNL (MOB)

| | | | | | |
|--|--------------------|---------------------------|--|---------------|---------------|
| RNP APCH - GPS. | | MALSR | MISSED APPROACH: Climb to 2000 direct JOTEN and on track 189° to SAINT and hold. | | |
| ⚠ For uncompensated Baro-VNAV systems, LNAV/VNAV NA below -4°C or above 42°C. For inop ALS, increase LNAV Cats C/D visibility to RVR 6000. * RVR 1800 authorized with use of FD or AP or HUD to DA. | | | | | |
| ATIS | MOBILE APP CON ★ | MOBILE TOWER ★ | GND CON | CLNC DEL | UNICOM |
| 124.75 257.85 | 118.5 269.3 | 118.3 (CTAF) 239.0 | 121.9 348.6 | 119.85 | 122.95 |



| CATEGORY | A | B | C | D |
|--------------|-------|-------------|------------------------|----------------------|
| LPV DA* | | 415/24 | 200 (200-½) | |
| LNAV/VNAV DA | | 636/45 | 421 (500-¾) | |
| LNAV MDA | | 620/40 | 405 (500-¾) | |
| CIRCLING | 680-1 | 461 (500-1) | 740-1½ 521 (600-1½) | 780-2 561 (600-2) |

SE-4, 20 MAR 2025 to 17 APR 2025

SE-4, 20 MAR 2025 to 17 APR 2025