


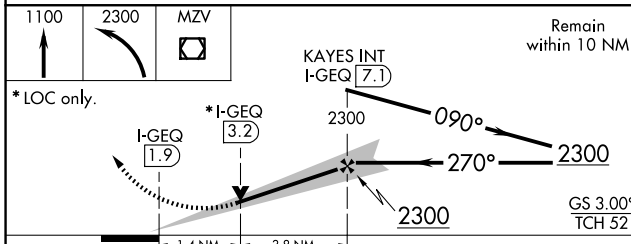
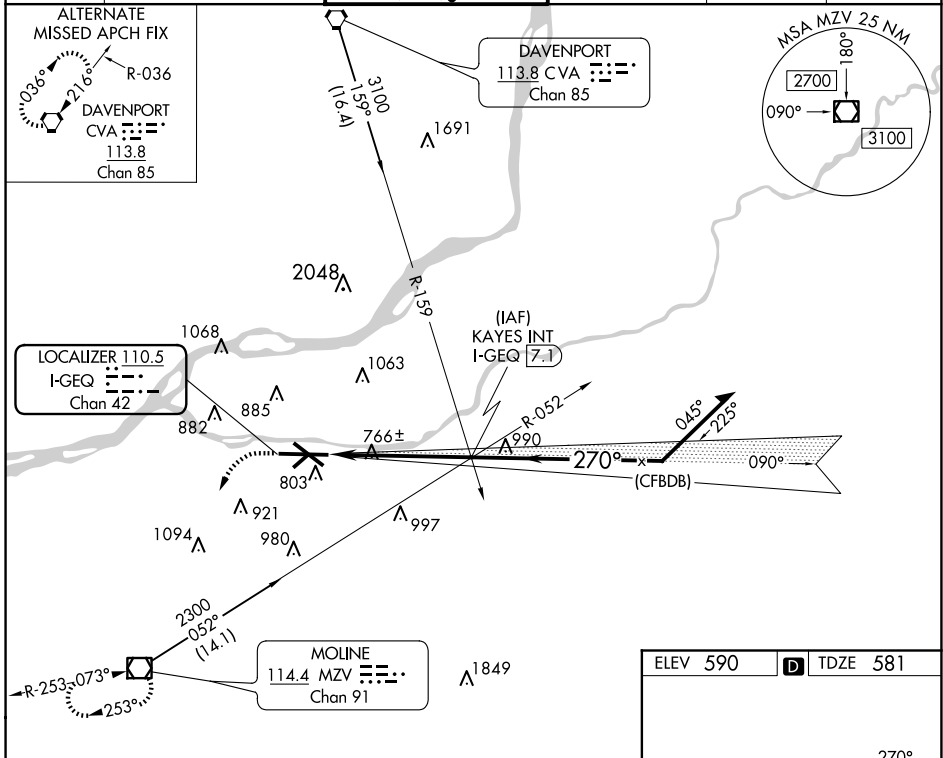
LOC/DME I-GEQ <b>110.5</b> Chan 42	APP CRS <b>270°</b>	Rwy Idg <b>10002</b> TDZE <b>581</b> Apt Elev <b>590</b>
--	------------------------	--

# ILS or LOC RWY 27

QUAD CITIES INTL (MLI)

<p><b>⚠</b> Circling to Rwy 5 NA at night. When local altimeter setting not received, use Davenport altimeter setting and increase DA to 828 feet and all MDA 60 feet, increase S-LOC-27 and Circling Cts C/D visibility ¼ SM. # RVR 1800 authorized with use of FD or AP or HUD to DA.</p>	<p><b>MALSR</b>  </p>	<p><b>MISSED APPROACH:</b> Climb to 1100, then climbing left turn to 2300 direct MZV VOR/DME and hold.</p>
---	--	--

ATIS <b>121.2</b>	QUAD CITY APP CON * <b>125.95 257.8</b>	QUAD CITY TOWER * <b>119.4 (CTAF) 0 269.55</b>	GND CON <b>121.9</b>	CLNC DEL <b>124.05</b>	UNICOM <b>122.95</b>
----------------------	--	---	-------------------------	---------------------------	-------------------------



ELEV 590	TDZE 581
----------	----------

**HIRL** Rwy 9-27 and 13-31  
**MIRL** Rwy 5-23  
**REIL** Rwy 13 and 31

FAF to MAP 5.2 NM

Knots	60	90	120	150	180
Min:Sec	5:12	3:28	2:36	2:05	1:44

CATEGORY	A	B	C	D
S-ILS 27#	781/24 200 (200-½)			
S-LOC 27	1060/24 479 (500-½)	1060/40 479 (500-¾)	1060/50 479 (500-1)	
CIRCLING	1140-1 550 (600-1)	1200-1 610 (700-1)	1320-2 730 (800-2)	1420-2¾ 830 (900-2¾)

EC-3, 20 MAR 2025 to 17 APR 2025

EC-3, 20 MAR 2025 to 17 APR 2025