

MONTEREY FIVE DEPARTURE

AL-271 (FAA)

MONTEREY RGNL (MRY)
MONTEREY, CALIFORNIA

**TOP ALTITUDE:
7000**

ATIS
119.25
CLNC DEL
135.45
GND CON
120.875 348.6
MONTEREY TOWER ★
118.4 257.8
NORCAL DEP CON
133.0 251.15 (001°-135°)
127.15 307.125 (136°-360°)

WOODSIDE
113.9 OSI :--
Chan 86

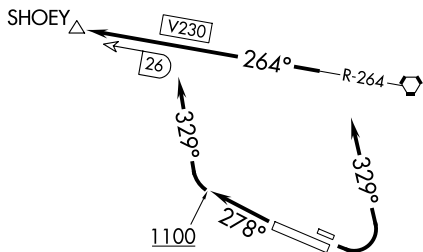
SAN JOSE
114.1 SJC :--
Chan 88

SALINAS
117.3 SNS :--
Chan 120

PANOCHÉ
112.6 PXN :--
Chan 73

PASO ROBLES
114.3 PRB :--
Chan 90

AVENAL
117.1 AVE :--
Chan 118



TAKEOFF MINIMUMS

- Rwy 10L: Standard with minimum climb of 360' per NM to 1300.
- Rwy 10R: Standard with minimum climb of 390' per NM to 1200.
- Rwy 28L: Standard with minimum climb of 310' per NM to 1100.
- Rwy 28R: Standard.

NOTE: Chart not to scale.

DEPARTURE ROUTE DESCRIPTION

TAKEOFF RUNWAYS 10L/R: Climbing left turn heading 329°. Thence. . . .

TAKEOFF RUNWAYS 28L/R: Climb heading 278° until leaving 1100 or as directed by Monterey Tower. Then climbing right turn heading 329°. Thence. . . .

. . . . intercept SNS R-264 westbound to SHOHEY intersection. Maintain 7000 or assigned altitude. Expect clearance to filed altitude five minutes after departure.

SW-2, 20 MAR 2025 to 17 APR 2025

SW-2, 20 MAR 2025 to 17 APR 2025