

APP CRS	Rwy Idg	7000
278°	TDZE	257
	Apt Elev	257

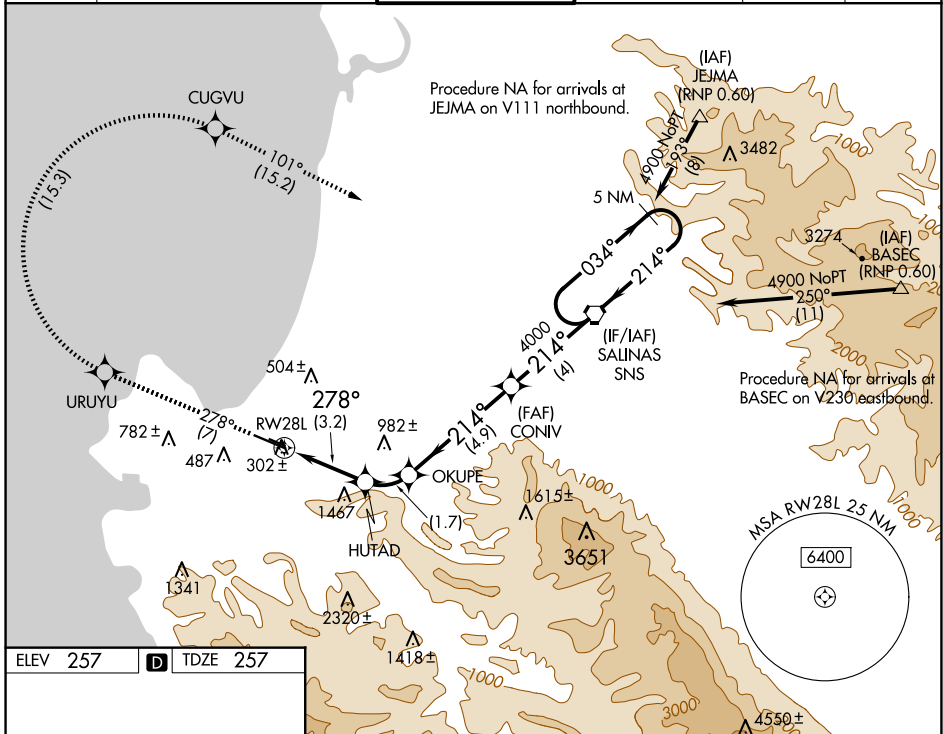
RNAV (RNP) Z RWY 28L

MONTEREY RGNL (MRY)

⚠ For uncompensated Baro-VNAV systems, procedure NA below 0°C (32°F) or above 48°C (120°F). RF required. GPS required.

MISSED APPROACH: Climb to 5500 on track 278° to URUYU, right turn to CUGVU, and on track 101° to SNS VORTAC and hold.

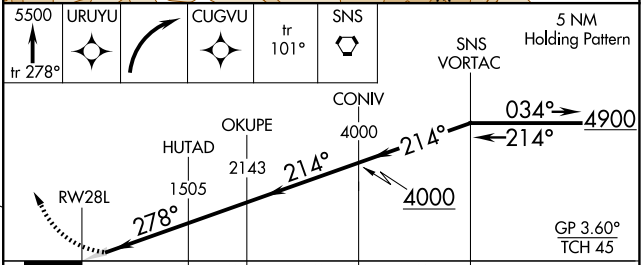
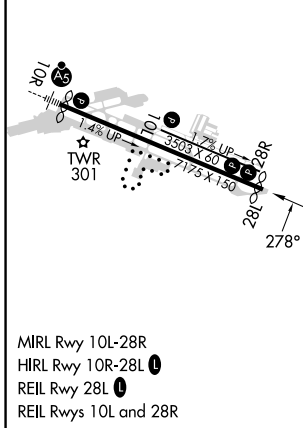
ATIS 119.25	NORCAL APP CON 133.0 251.15 (001°-135°) 127.15 307.125 (136°-360°)	MONTEREY TOWER* 118.4 (CTAF) 0257.8	GND CON 120.875 348.6	CLNC DEL 135.45	UNICOM 122.95
-----------------------	--	--	---------------------------------	---------------------------	-------------------------



SW-2, 20 MAR 2025 to 17 APR 2025

SW-2, 20 MAR 2025 to 17 APR 2025

ELEV 257	D	TDZE 257
----------	----------	----------



CATEGORY	A	B	C	D
RNP 0.10 DA	527/45	270 (300- $\frac{2}{3}$)		NA
RNP 0.15 DA	767-1 $\frac{1}{2}$	510 (600-1 $\frac{1}{2}$)		NA
RNP 0.20 DA	1236-3	979 (1000-3)		NA

AUTHORIZATION REQUIRED