

MONTGOMERY, ALABAMA

# HI-ILS Y or LOC Y RWY 10

LOC I-MGM <b>109.9</b>	APCH CRS <b>097°</b>	Rwy Idg 9020 TDZE 219 Arpt Elev 232
---------------------------	-------------------------	--

[USAF] MONTGOMERY RGNL (DANNELLY FLD) (KMGM)

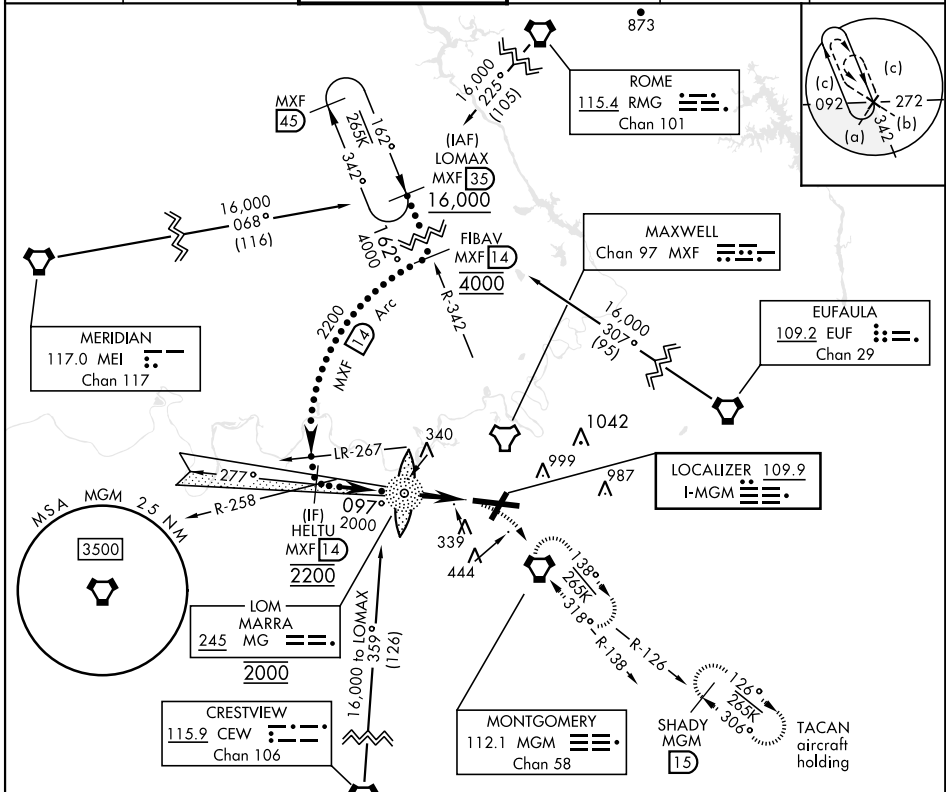
DME required. ADF and DME required for LOC only.

- When ALS inop, increase RVR to 40 vis to 3/4 miles.
- When ALS inop, increase vis to 1 1/2 miles.
- \*\*\* Circling not authorized for CAT E, N of Rwy 10-28.

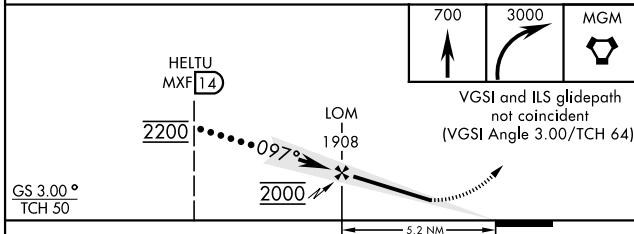


MISSED APPROACH: Climb to 700 then climbing right turn to 3000 direct MGM VORTAC and hold, continue climb in hold to 3000.  
TACAN aircraft continue to 3500 on MGM R-126 to SHADY/MGM 15 DME and hold southeast, right turn, 306° inbound.

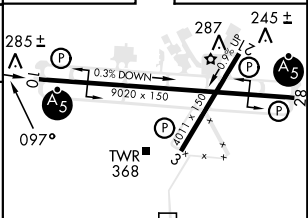
ATIS ★ <b>120.675</b>	APP CON <b>124.0 363.025</b>	DANNELLY TOWER★ <b>119.7(CTAF) 0360.85</b>	GND CON <b>121.7 348.6</b>	CINC DEL <b>118.3 270.3</b>	UNICOM <b>112.95</b>
--------------------------	---------------------------------	---	-------------------------------	--------------------------------	-------------------------



EMERG SAFE ALT 100 NM 5000



ELEV	232	TDZE	219
------	-----	------	-----



CATEGORY	C	D	E	FAF to MAP 5.2 NM					
	S-ILS 10*	419/24	200	(200-1/2)	Knots	120	140	160	180
S-LOC 10**	460/45	241	(500-7/8)	Min:Sec	2:36	2:14	1:57	1:44	1:34
*** CIRCLING	800-1 1/2 568 (600-1 1/2)	860-2 628 (700-2)	860-2 1/4 628 (700-2 1/4)						

MONTGOMERY, ALABAMA  
Amdt 9E 23JAN25

32°18'N-86°24'W

MONTGOMERY RGNL (DANNELLY FLD) (KMGM)

# HI-ILS Y or LOC Y RWY 10

SE-4, 20 MAR 2025 to 17 APR 2025

SE-4, 20 MAR 2025 to 17 APR 2025