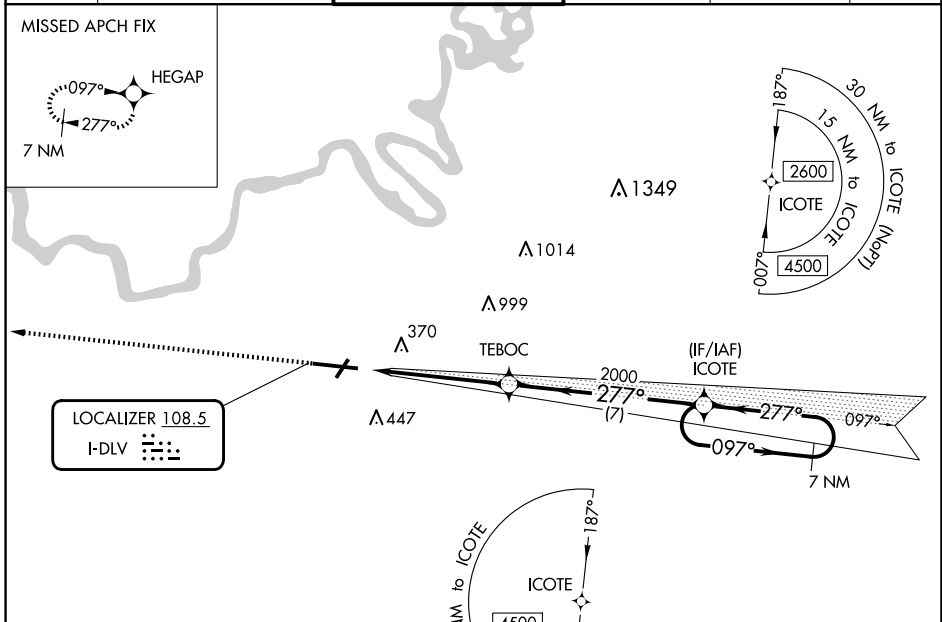


LOC I-DLV	APP CRS	Rwy Idg	<b>9020</b>
<b>108.5</b>	<b>277°</b>	TDZE	<b>197</b>
		Apt Elev	<b>221</b>

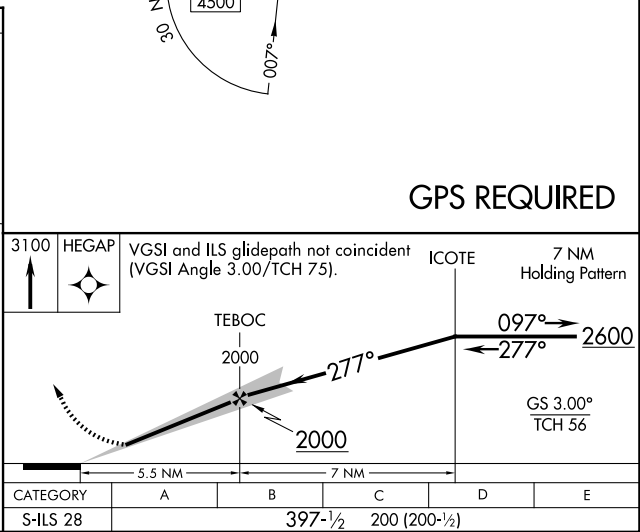
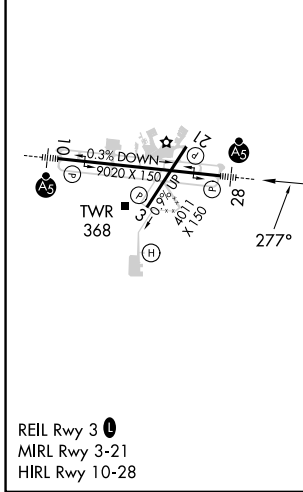
# ILS Z RWY 28

MONTGOMERY RGNL (DANNELLY FLD) (MGM)

NA GPS required. For inop MALSRS, increase S-ILS 28 Cat E visibility to 3/4 mile.		MALSRS 		MISSED APPROACH: Climb to 3100 direct HEGAP and hold.	
ATIS	MONTGOMERY APP CON *	DANNELLY TOWER *	GND CON	CLNC DEL	UNICOM
<b>120.675</b>	<b>124.0 363.025</b>	<b>119.7 (CTAF) 360.85</b>	<b>121.7 348.6</b>	<b>118.3 270.3</b>	<b>122.95</b>



ELEV 221	TDZE 197
----------	----------



CATEGORY	A	B	C	D	E
S-ILS 28		397-1/2	200 (200-1/2)		

# ILS Z RWY 28

SE-4, 20 MAR 2025 to 17 APR 2025

SE-4, 20 MAR 2025 to 17 APR 2025