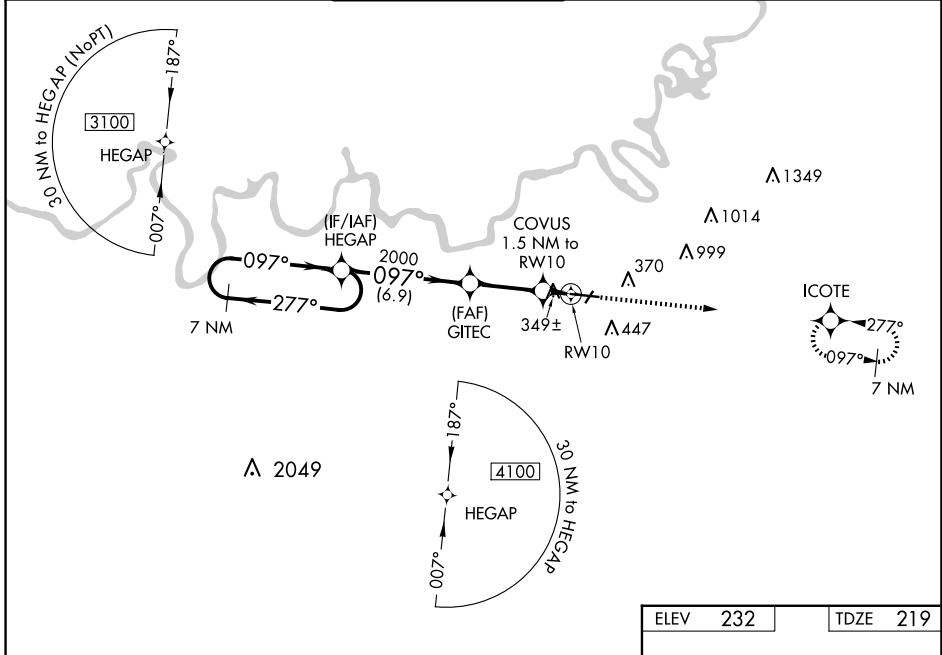


WAAS CH 50100 W10A	APP CRS 097°	Rwy Idg TDZE Apt Elev	9020 219 232
--	------------------------	-----------------------------	---

RNAV (GPS) RWY 10

MONTGOMERY RGNL (DANNELLY FLD) (MGM)

RNP APCH-GPS.		DANNELLY TOWER ★		GND CON	CLNC DEL	UNICOM
<p>▼ For uncompensated Baro-VNAV systems, LNAV/VNAV NA below -8°C or above 54°C. For inop MALS, increase LPV Cat E visibility to RVR 4000; increase LNAV/VNAV Cat E visibility to RVR 5000; increase LNAV Cats C/D/E visibility to 1½ mile. Circling for Cat E NA north of Rwy 10-28. **RVR 1800 authorized with use of FD or AP or HUD to DA.</p>		★ 119.7 (CTAF) 360.85		121.7 348.6	118.3 270.3	122.95
ATIS	MONTGOMERY APP CON ★					
120.675	124.0 363.025					



<p>VGSI and RNAV glidepath not coincident (VGSI Angle 3.00/TCH 64).</p> <p>7 NM Holding Pattern</p> <p>HEGAP</p> <p>3100 ← 277° → 097° → 097° → 2000</p> <p>GP 3.00° TCH 50</p>		<p>2600</p> <p>ICOTE</p> <p>COVUS 1.5 NM to RWY 10</p> <p>1 NM to RWY 10</p> <p>RWY 10</p>			
<p>6.9 NM</p> <p>3.9 NM</p> <p>0.5 NM</p> <p>1 NM</p>		<p>ELEV 232</p> <p>TDZE 219</p> <p>TWR 368</p> <p>REIL Rwy 3</p> <p>MIRL Rwy 3-21</p> <p>HIRL Rwy 10-28</p>			
CATEGORY	A	B	C	D	E
LPV DA **	419/24		200 (200-½)		
LNAV/VNAV DA	530/24		311 (300-½)		
LNAV MDA	600/24	381 (400-½)	600/35		381 (400-¾)
CIRCLING	700-1	468 (500-1)	800-1½ 568 (600-1½)	860-2 628 (700-2)	860-2¼ 628 (700-2¼)

SE-4, 20 MAR 2025 to 17 APR 2025

SE-4, 20 MAR 2025 to 17 APR 2025