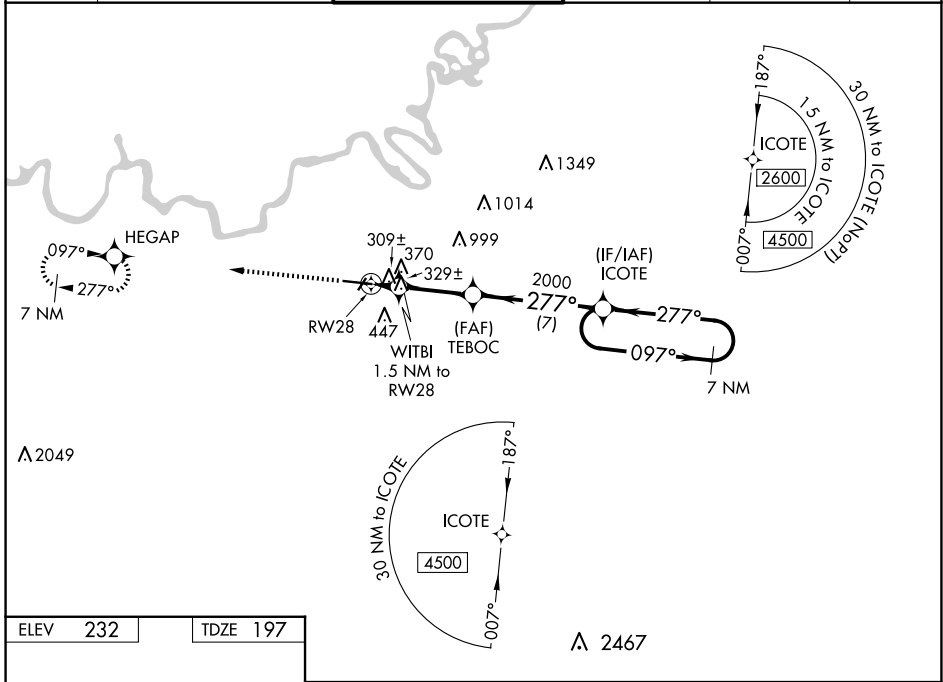


WAAS CH 56200 W28A	APP CRS 277°	Rwy Idg TDZE Apt Elev	9020 197 232
--	------------------------	-----------------------------	---

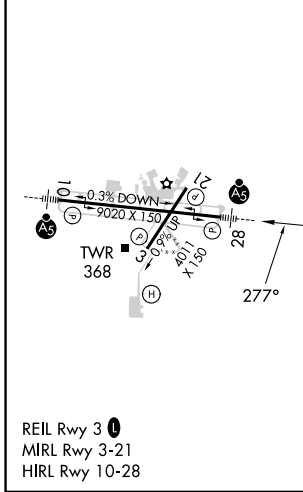
RNAV (GPS) RWY 28

MONTGOMERY RGNL (DANNELLY FLD) (MGM)

RNP APCH-GPS.			MALSR	MISSED APPROACH: Climb to 3100 direct HEGAP and hold.		
⚠ For uncompensated Baro-VNAV systems, LNAV/VNAV NA below -8°C or above 54°C. For inop MALSR, increase LPV ⚠ Cat E visibility to 3/4 mile; increase LNAV/VNAV Cat E visibility to 1 1/2 mile; increase LNAV Cat E visibility to 1 1/2 mile. Circling for Cat E NA north of Rwy 10-28.						
ATIS 120.675	MONTGOMERY APP CON * 124.0 363.025	DANNELLY TOWER * 119.7 (CTAF) 0 360.85	GND CON 121.7 348.6	CLNC DEL 118.3 270.3	UNICOM 122.95	



ELEV 232	TDZE 197
----------	----------



3100	HEGAP	VGSI and RNAV glidepath not coincident (VGSI Angle 3.00/TCH 75).		7 NM	Holding Pattern
	ICOTE	2600	097°	←	277°
	TEBOC	2000	277°		
	WITBI	1.5 NM to RWY 28			
	RWY 28	1 NM to RWY 28			
		720	2000		
		1 NM	0.5	4 NM	7 NM
					GP 3.00° TCH 56
CATEGORY	A	B	C	D	E
LPV DA	397-1/2		200 (200-1/2)		
LNAV/VNAV DA	606-7/8		409 (400-7/8)		
LNAV MDA	580-1/2	383 (400-1/2)	580-5/8		383 (400-5/8)
<input checked="" type="checkbox"/> CIRCLING	700-1	468 (500-1)	800-1/2 568 (600-1/2)	860-2 628 (700-2)	860-2 1/4 628 (700-2 1/4)

RNAV (GPS) RWY 28

SE-4, 20 MAR 2025 to 17 APR 2025

SE-4, 20 MAR 2025 to 17 APR 2025