

WAAS CH <b>56618</b> <b>W06A</b>	APP CRS <b>060°</b>	Rwy Idg TDZE Apt Elev	<b>6501</b> <b>623</b> <b>629</b>
--	------------------------	-----------------------------	---

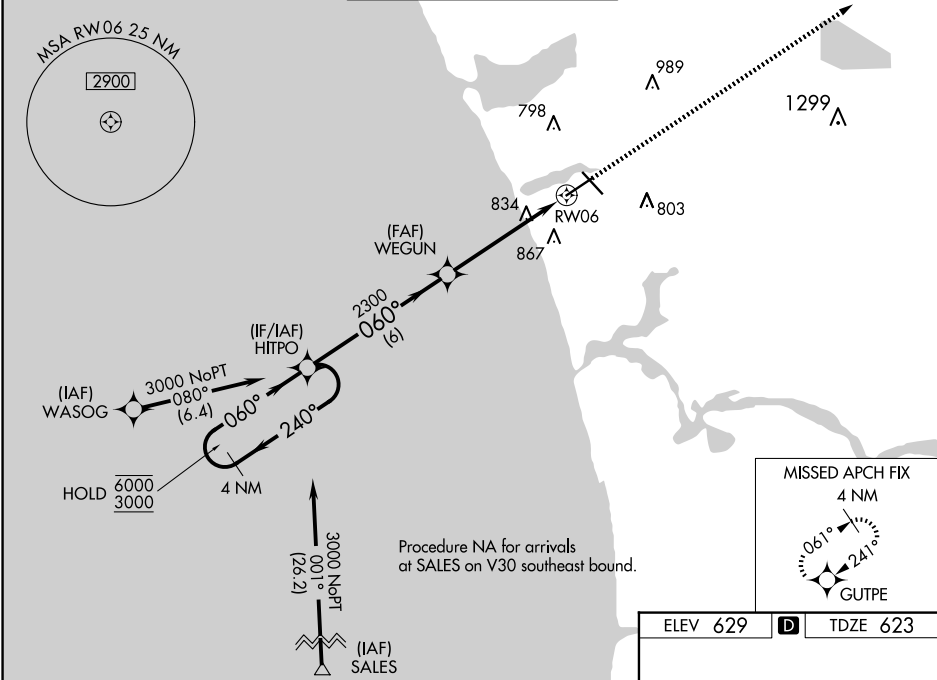
**RNAV (GPS) RWY 6**  
MUSKOGON COUNTY (MKG)

RNP APCH.

**▽**  
**▲** Rwy 6 helicopter visibility reduction below ¾ SM NA. For uncompensated Baro-VNAV systems, LNAV/VNAV NA below -18°C or above 54°C.

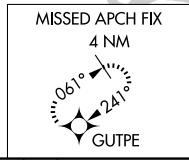
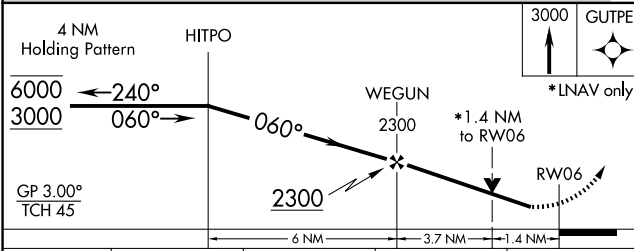
MISSED APPROACH: Climb to 3000 direct GUTPE and hold.

ATIS <b>124.3</b>	GREAT LAKES APP CON★ <b>119.8 290.35</b> (North) <b>133.825 290.35</b> (South)	MUSKOGON TOWER★ <b>126.25</b> (CTAF) <b>0 343.725</b>	GND CON <b>121.6</b>	UNICOM <b>122.95</b>
----------------------	--	--	-------------------------	-------------------------



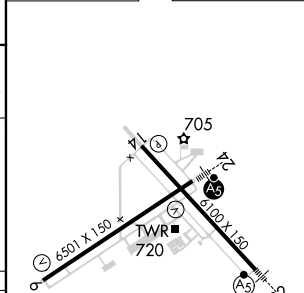
EC-1, 20 MAR 2025 to 17 APR 2025

EC-1, 20 MAR 2025 to 17 APR 2025



ELEV 629	<b>D</b>	TDZE 623
----------	----------	----------

CATEGORY	A	B	C	D
LPV DA		928-7/8 305 (300-7/8)		
LNAV/VNAV DA		975-1 352 (400-1)		
LNAV MDA	1100-1 477 (500-1)		1100-1 3/8 477 (500-1 3/8)	
<b>C</b> CIRCLING	1100-1 471 (500-1)	1180-1 551 (600-1)	1200-1 1/2 571 (600-1 1/2)	1200-2 571 (600-2)



- REIL Rwy 6
- REIL Rwy 14
- HIRL Rws 6-24
- HIRL Rws 14-32