

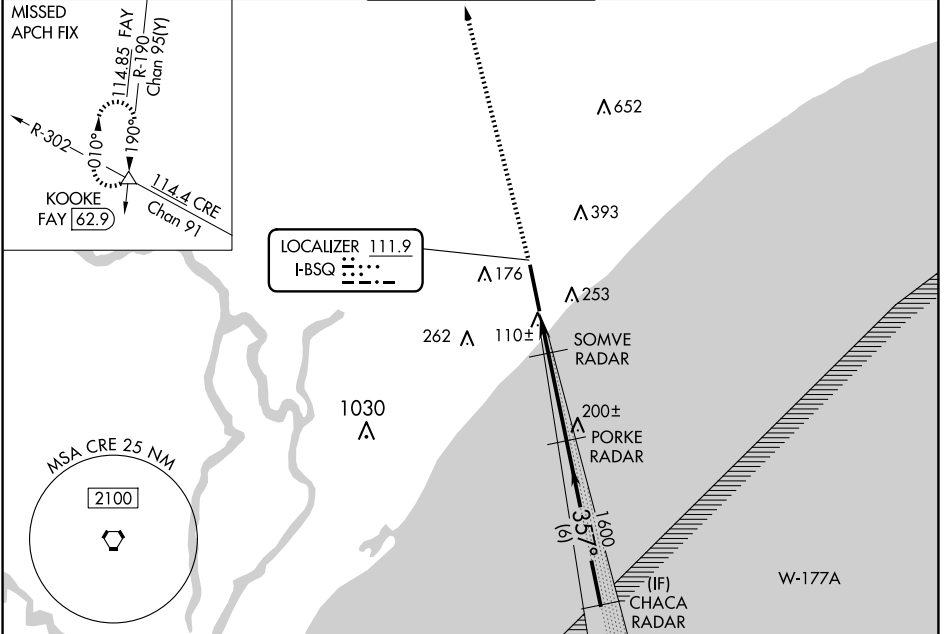
LOC I-BSQ <b>111.9</b>	APP CRS <b>357°</b>	Rwy Idg TDZE Apt Elev	<b>9503</b> <b>25</b> <b>25</b>
---------------------------	------------------------	-----------------------------	---------------------------------------

# ILS or LOC RWY 36

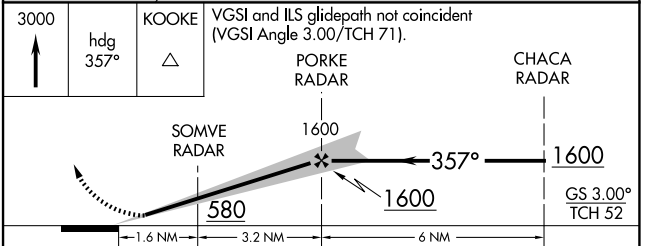
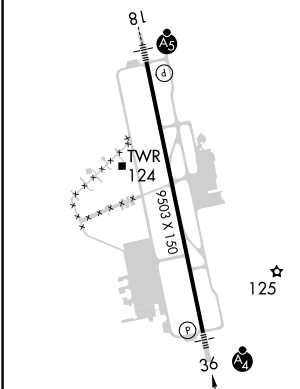
MYRTLE BEACH INTL (MYR)

RADAR required.		MALSF	MISSED APPROACH: Climb to 3000 on heading 357° expect RADAR vectors to KOOKE INT/FAY 62.9 DME and hold.		
For inop ALS increase S-LOC 36 Cats D/E visibility to RVR 5000.					

ATIS <b>123.925</b>	MYRTLE BEACH APP CON ★ (171° - 321°) <b>127.4 257.95</b> (322° - 170°) <b>119.2 350.3</b>	MYRTLE BEACH TOWER ★ <b>128.45 (CTAF) 259.3</b>	GND CON <b>120.3 275.8</b>	CLNC DEL <b>120.3</b>	UNICOM <b>122.95</b>
------------------------	---	--	-------------------------------	--------------------------	-------------------------



ELEV 25	TDZE 25
---------	---------



CATEGORY	A	B	C	D	E
S-ILS 36	225/40 200 (200-¾)				
S-LOC 36	360/40 335 (400-¾)				
CIRCLING	560-1	535 (600-1)	700-2	700-2¼	700-2½
			675 (700-2)	675 (700-2¼)	675 (700-2½)

MYRTLE BEACH, SOUTH CAROLINA  
Amdt 5 03NOV22

33°41'N-78°56'W

# ILS or LOC RWY 36

SE-2, 20 MAR 2025 to 17 APR 2025

SE-2, 20 MAR 2025 to 17 APR 2025