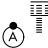


# RNAV (RNP) Z RWY 4R

NEWARK LIBERTY INTL (EWR)

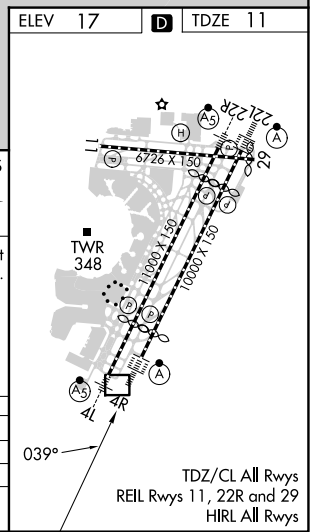
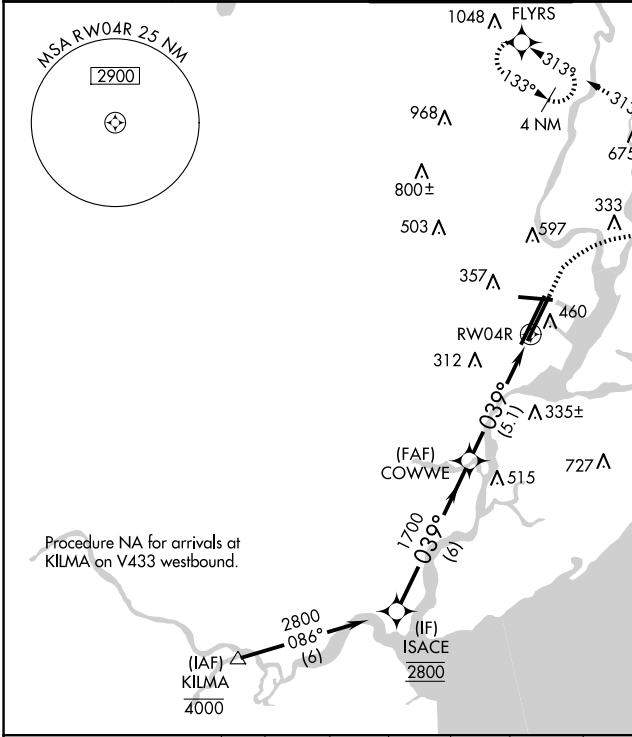
APP CRS	Rwy Idg	<b>8810</b>
<b>039°</b>	TDZE	<b>11</b>
	Apt Elev	<b>17</b>

RNP AR APCH.  
RADAR required.

ALSF-2  
  
 MISSED APPROACH: (Do not exceed 210K until NEBTE) Climb to 560 then climbing right turn to 2000 direct TYNIE and left turn on track 015° to NEBTE, cross NEBTE at or below 2000 then dimbling left turn to 3000 on track 313° to FLYRS and hold, continue climb-in-hold to 3000.  
 \* Missed approach requires minimum climb of 351 feet per NM to 660.

For uncompensated Baro-VNAV systems, procedure NA below -12°C or above 54°C. For inop ALS, increase RNP 0.30 all Cats visibility to 1 1/2 SM.

D-ATIS	NEWARK APP CON	NEWARK TOWER	GND CON	CLNC DEL	CPDLC
<b>115.7 134.825</b>	<b>128.55 379.9</b>	<b>118.3 257.6</b>	<b>121.8</b>	<b>118.85</b>	



ISACE	560	2000	TYNIE	tr 015°	NEBTE	3000	FLYRS
				tr 015°	2000	tr 313°	
VGSi and RNAV glidepath not coincident (VGSi Angle 2.95/TCH 71).							
2800	039°	1700	COWWE	1700	RW04R		
GP 3.04°							
TCH 55							
	6 NM			5.1 NM			
CATEGORY	A	B	C	D			
RNP 0.15 DA*		396/35	385 (400-3/4)				
RNP 0.30 DA		490/50	479 (500-1)				

**AUTHORIZATION REQUIRED**

# RNAV (RNP) Z RWY 4R

NE-2, 20 MAR 2025 to 17 APR 2025

NE-2, 20 MAR 2025 to 17 APR 2025