

BOSTON CENTER
126.47 388.8
134.3 256.9
NEWARK APP CON
121.15 379.9
ATIS
115.7 134.825

ROCHESTER
110.0 ROC ---
Chan 37

SYRACUSE
117.0 SYR ---
Chan 117

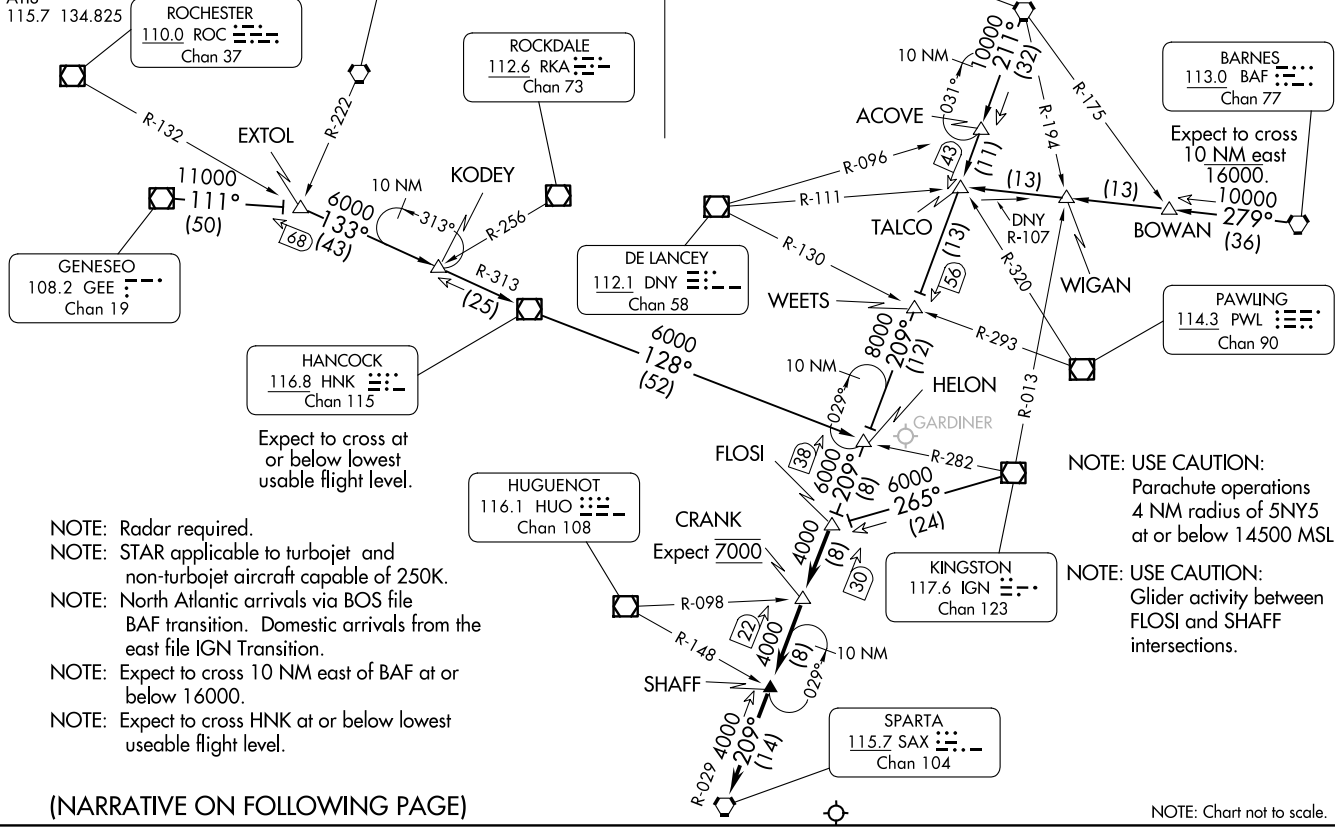
ROCKDALE
112.6 RKA ---
Chan 73

ALBANY
115.3 ALB ---
Chan 100

BARNES
113.0 BAF ---
Chan 77

Expect to cross
10 NM east
16000.

PAWLING
114.3 PWL ---
Chan 90



(NARRATIVE ON FOLLOWING PAGE)

ARRIVAL ROUTE DESCRIPTION

ALBANY TRANSITION (ALB.SHAFF7): From over ALB VORTAC on ALB R-211 to WEETS INT, then on SAX R-029 to FLOSI INT. Thence. . . .

BARNES TRANSITION (BAF.SHAFF7): From over BAF VORTAC on BAF R-279 to TALCO INT, then on ALB R-211 to WEETS INT, then on SAX R-029 to FLOSI INT. Thence. . . .

GENESEO TRANSITION (GEE.SHAFF7): From over GEE VOR/DME on GEE R-111 to EXTOL INT, then on HNK R-313 to HNK VOR/DME, then on HNK R-128 to HELON INT, then on SAX R-029 to FLOSI INT. Thence. . . .

HANCOCK TRANSITION (HNK.SHAFF7): From over HNK VOR/DME on HNK R-128 to HELON INT, then on SAX R-029 to FLOSI INT. Thence. . . .

KINGSTON TRANSITION (IGN.SHAFF7): From over IGN VOR/DME on IGN R-265 to FLOSI INT. Thence. . . .

. . . . From over FLOSI INT on SAX R-029 to CRANK INT, then to SHAFF INT, then to SAX VORTAC. Expect radar vectors to final approach course.

NE-2, 20 MAR 2025 to 17 APR 2025

NE-2, 20 MAR 2025 to 17 APR 2025