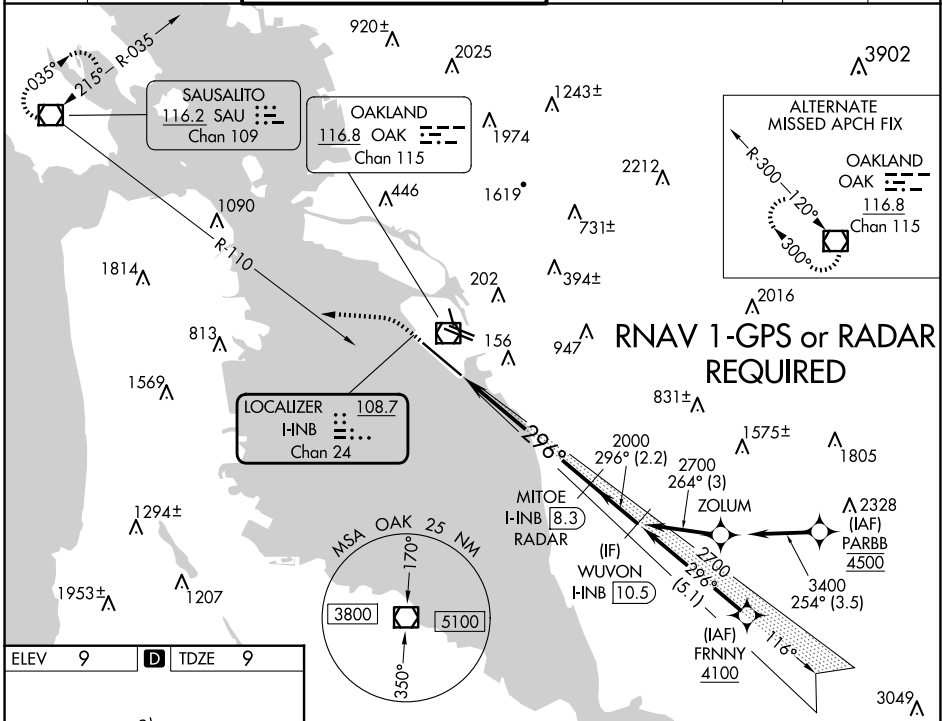


LOC/DME I-INB 108.7 Chan 24	APP CRS 296°	Rwy Idg TDZE Apt Elev 10000 9 9
--	------------------------	---

ILS or LOC RWY 30

SAN FRANCISCO BAY OAKLAND INTL (OAK)

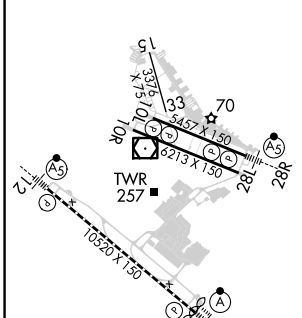
DME or RADAR required.		ALSIF-2	MISSED APPROACH: Climb to 600 then climbing left turn to 4000 on heading 260° and on SAU VOR/DME R-110 to SAU VOR/DME and hold, continue climb-in-hold to 4000.			
D-ATIS 133.775	NORCAL APP CON 125.35 263.15	OAKLAND TOWER 118.3 291.65 (Rwys 10L/R-28L/R, 15-33) 127.2 256.9 (Rwy 12-30)		GND CON 121.9 (Rwys 10L/R-28L/R, 15-33) 121.75 (Rwy 12-30)	CLNC DEL 121.1	CPDLC



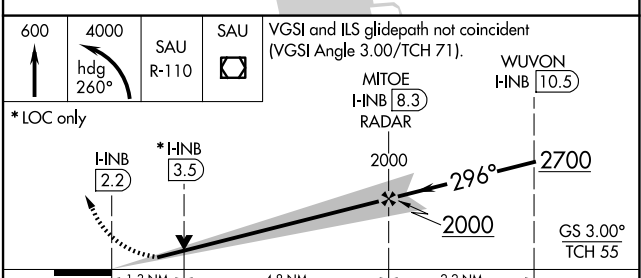
SW-2, 20 MAR 2025 to 17 APR 2025

SW-2, 20 MAR 2025 to 17 APR 2025

ELEV 9	D	TDZE 9
--------	----------	--------



REIL Rwy 10R	TDZ/CL Rwy 30	MIRL Rwy 15-33	HIRL Rwys 12-30, 10L-28R, 10R-28L
FAF to MAP 6.1 NM			
Knots	60	90	120 150 180
Min:Sec	6:06	4:04	3:03 2:26 2:02



CATEGORY	A	B	C	D
S-ILS 30	209/18 200 (200-½)			
S-LOC 30	500/24	491 (500-½)	500/50	491 (500-1)
C CIRCLING	560-1	551 (600-1)	660-1¾ 651 (700-1¾)	1400-3 1391 (1400-3)