

LOC I-OAK 109.9	APP CRS 278°	Rwy Idg 28R 5457	28L 6213
		TDZE 7	9
		Apt Elev 9	9

ILS or LOC/DME RWY 28R

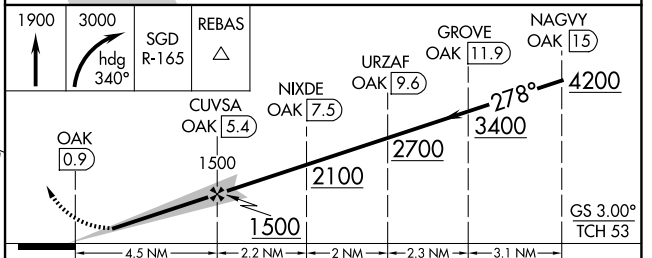
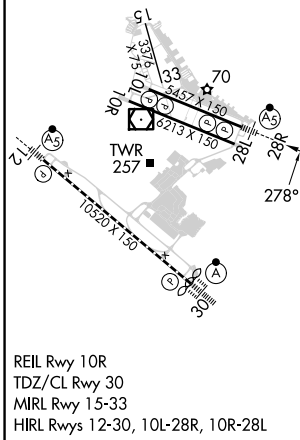
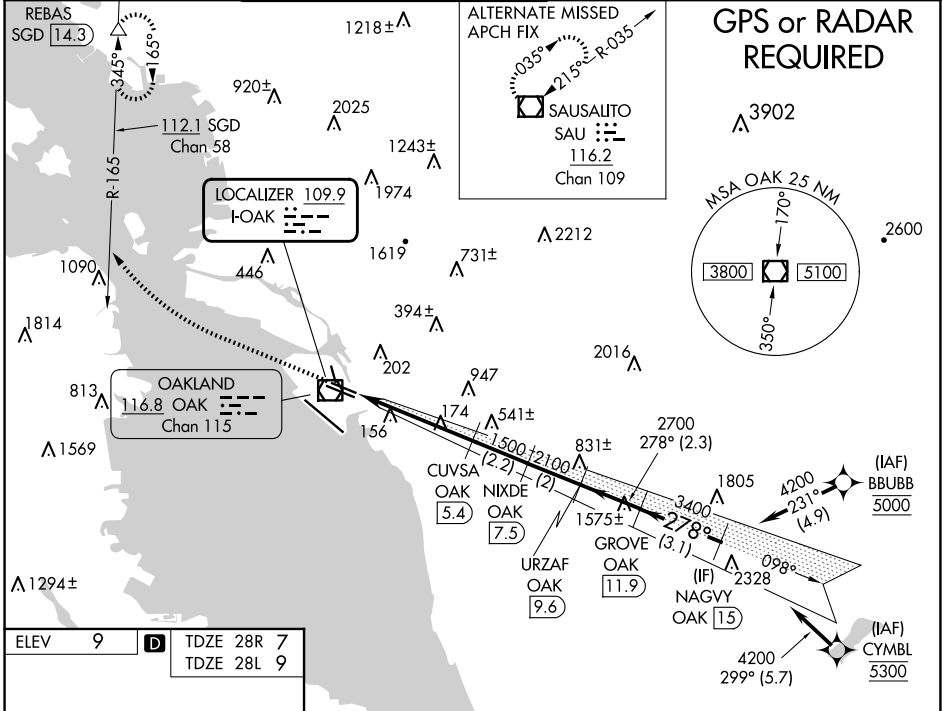
SAN FRANCISCO BAY OAKLAND INTL (OAK)

⚠ DME required. DME from OAK VOR/DME. Simultaneous reception of I-OAK and OAK DME required.
*RVR 1800 authorized with use of FD or AP or HUD to DA.

MALSR
Rwy 28R

MISSED APPROACH: Climb to 1900 then climbing right turn to 3000 on heading 340° and SGD VORTAC R-165 to REBAS/SGD 14.3 DME and hold.

D-ATIS 133.775	NORCAL APP CON 125.35 263.15	OAKLAND TOWER 118.3 291.65 (Rwys 10L/R-28L/R, 15-33) 127.2 256.9 (Rwy 12-30)	GND CON 121.9 (Rwys 10L/R-28L/R, 15-33) 121.75 (Rwy 12-30)	CLNC DEL 121.1	CPDLC
--------------------------	--	--	--	--------------------------	-------



CATEGORY	A	B	C	D
*S-ILS 28R	207/24 200 (200-½)			
S-LOC 28R	440/24 433 (500-½)			
SIDESTEP 28L	440/55	431 (500-1)	440-1½	431 (500-1½)
C CIRCLING	560-1	551 (600-1)	660-1¾ 651 (700-1¾)	1400-3 1391 (1400-3)

SW-2, 20 MAR 2025 to 17 APR 2025

SW-2, 20 MAR 2025 to 17 APR 2025