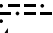
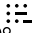


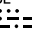
**TOP ALTITUDE:  
ASSIGNED BY ATC**

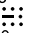
D-ATIS  
133.775  
CLNC DEL  
121.1  
CPDLC  
GND CON  
121.9 (Rwys 28L/R)  
121.75 (Rwy 30)  
OAKLAND TOWER  
118.3 291.65 (Rwys 28L/R)  
127.2 256.9 (Rwy 30)  
NORCAL DEP CON  
135.1 307.2


POINT REYES  
113.7 PYE   
Chan 84

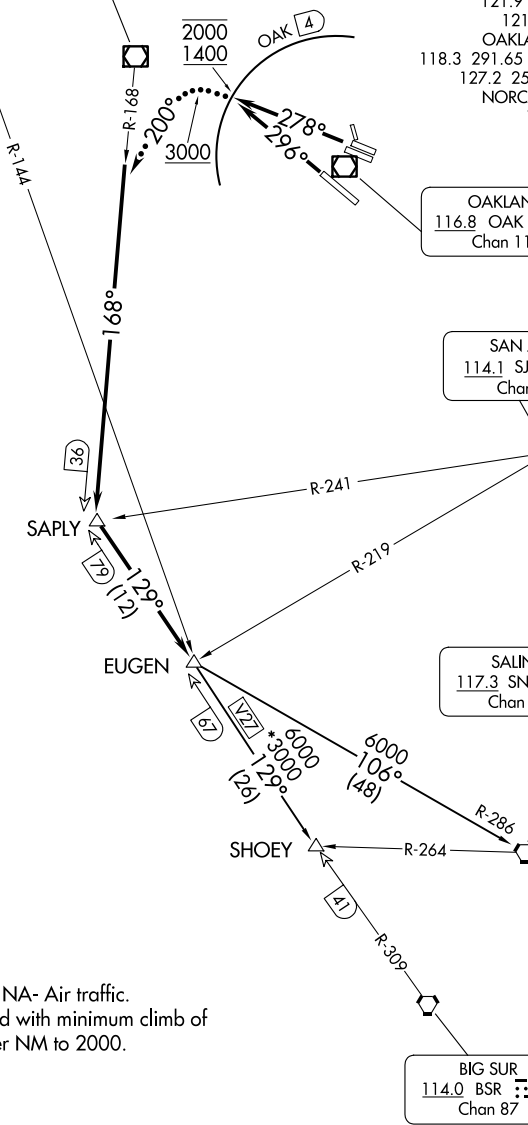
SAUSALITO  
116.2 SAU   
Chan 109

OAKLAND  
116.8 OAK   
Chan 115

SAN JOSE  
114.1 SJC   
Chan 88

SALINAS  
117.3 SNS   
Chan 120

BIG SUR  
114.0 BSR   
Chan 87



NOTE: RADAR required.  
NOTE: DME required.

### TAKEOFF MINIMUMS

Rwys 10L, 10R, 12, 15, 33: NA- Air traffic.  
Rwys 28L, 28R, 30: Standard with minimum climb of  
375' per NM to 2000.

NOTE: Chart not to scale.

(CONTINUED ON FOLLOWING PAGE)



DEPARTURE ROUTE DESCRIPTION

TAKEOFF RUNWAYS 28L/R: Climb heading 278° for RADAR vectors to SAU R-168, cross 4 DME northwest of OAK VOR/DME at or above 1400 and at or below 2000. Thence . . . .

TAKEOFF RUNWAY 30: Climb heading 296° for RADAR vectors to SAU R-168, cross 4 DME northwest of OAK VOR/DME at or above 1400 and at or below 2000. Thence . . . .

. . . . intercept and proceed on the SAU R-168 to SAPLY INT and on BSR R-309 to EUGEN INT, then via assigned (transition). Expect clearance to filed altitude ten minutes after departure.

LOST COMMUNICATIONS: After reaching 3000, turn left heading 200° to intercept and proceed via SAU R-168, then resume own navigation.

SALINAS TRANSITION (NUEVO8.SNS): From over EUGEN INT on SNS R-286 to SNS VORTAC.

SHOEY TRANSITION (NUEVO8.SHOEY): From over EUGEN INT on BSR R-309 to SHOEY INT.

SW-2, 20 MAR 2025 to 17 APR 2025

SW-2, 20 MAR 2025 to 17 APR 2025