

APP CRS <b>278°</b>	Rwy Idg <b>6213</b>
	TDZE <b>9</b>
	Apt Elev <b>9</b>

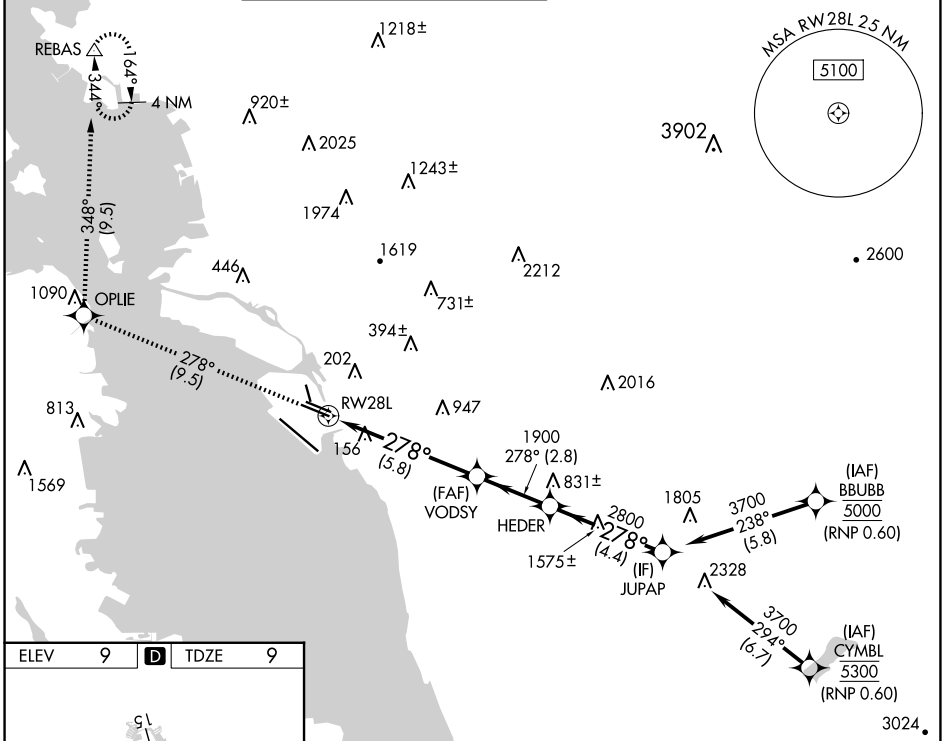
# RNAV (RNP) Z RWY 28L

## SAN FRANCISCO BAY OAKLAND INTL (OAK)

▼ For uncompensated Baro-VNAV systems, procedure NA below 0°C (32°F) or above 54°C (130°F). GPS required.

MISSED APPROACH: Climb to 3000 on track 278° to OPLIE and on track 348° to REBAS and hold.

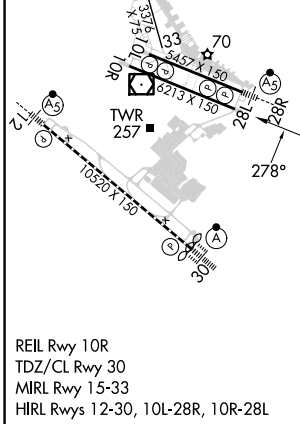
D-ATIS <b>133.775</b>	NORCAL APP CON <b>125.35 263.15</b>	OAKLAND TOWER <b>118.3 291.65</b> (Rwys 10L/R-28L/R, 15-33) <b>127.2 256.9</b> (Rwy 12-30)	GND CON <b>121.9</b> (Rwys 10L/R-28L/R, 15-33) <b>121.75</b> (Rwy 12-30)	CLNC DEL <b>121.1</b>	CPDLC
--------------------------	--	---	--	--------------------------	-------



SW-2, 20 MAR 2025 to 17 APR 2025

SW-2, 20 MAR 2025 to 17 APR 2025

ELEV 9	<b>D</b>	TDZE 9
--------	----------	--------



3000	OPLIE	REBAS	VGSI and RNAV glidepath not coincident (VGSI Angle 3.00/TCH 50).		JUPAP
tr 278°	tr 348°	tr 348°	VODSY	HEDER	JUPAP
			1900	2800	3700
			1900	2800	3700
			5.8 NM	2.8 NM	4.4 NM
CATEGORY	A	B	C	D	
RNP 0.15 DA	341/53		332 (400-1)		
RNP 0.30 DA	399-1¼		390 (400-1¼)		
<b>AUTHORIZATION REQUIRED</b>					