

APP CRS	Rwy Idg	<b>10000</b>
<b>296°</b>	TDZE	<b>9</b>
	Apt Elev	<b>9</b>

# RNAV (RNP) Z RWY 30

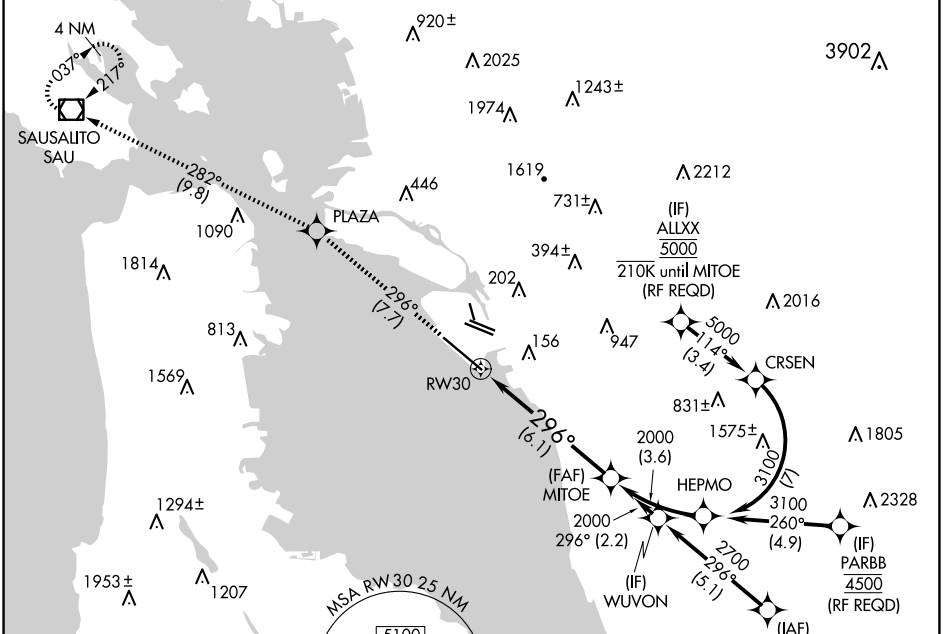
## SAN FRANCISCO BAY OAKLAND INTL (OAK)

**GPS required.** For uncompensated Baro-VNAV systems, procedure NA below 1°C (34°F) or above 54°C (130°F). For inop ALS increase RNP 0.11 visibility all Cats to RVR 4000.

D-ATIS	NORCAL APP CON	OAKLAND TOWER		GND CON	CLNC DEL	CPDLC
<b>133.775</b>	<b>125.35 263.15</b>	<b>118.3 291.65</b>	(Rwys 10L/R-28L/R, 15-33)	<b>121.9</b>	(Rwys 10L/R-28L/R, 15-33)	
		<b>127.2 256.9</b>	(Rwy 12-30)	<b>121.75</b>	(Rwy 12-30)	

**ALSIF-2**

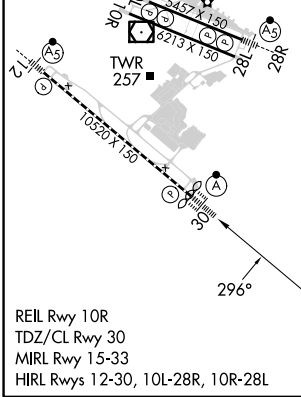
**MISSED APPROACH:** Climb to 4000 on track 296° to PLAZA and on track 282° to SAU VOR/DME and hold, continue climb-in-hold to 4000.



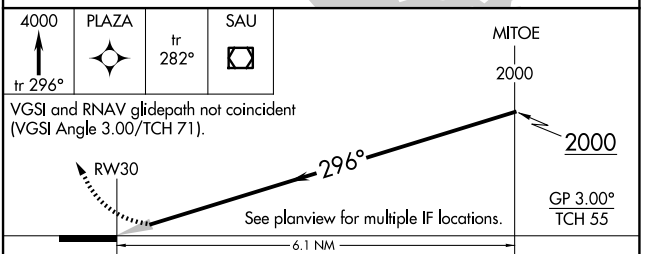
SW-2, 20 MAR 2025 to 17 APR 2025

SW-2, 20 MAR 2025 to 17 APR 2025

ELEV	<b>9</b>	<b>D</b>	TDZE	<b>9</b>
------	----------	----------	------	----------



REIL Rwy 10R  
 TDZ/CL Rwy 30  
 MIRL Rwy 15-33  
 HIRL Rwys 12-30, 10L-28R, 10R-28L



CATEGORY	A	B	C	D
RNP 0.11 DA		267/24	258 (300-½)	
RNP 0.30 DA		317/24	308 (400-½)	

### AUTHORIZATION REQUIRED