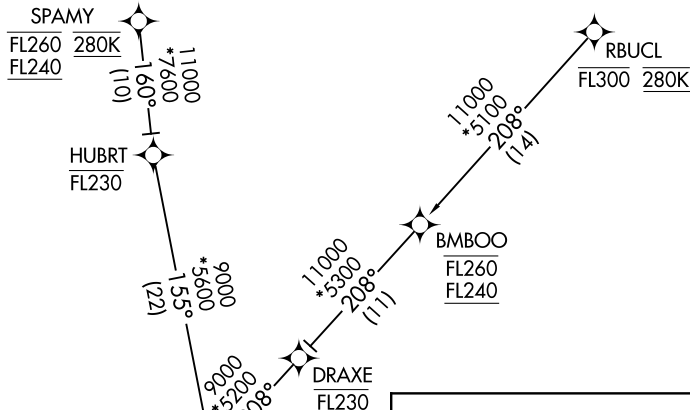


# WNDSR TWO ARRIVAL (RNAV)

OAKLAND CENTER  
125.85 323.0  
NORCAL APP CON  
120.9 323.2  
D-ATIS  
133.775  
OAKLAND TOWER  
127.2 256.9 (Rwy 30)  
118.3 291.65 (Rwys 28L/R)  
GND CON  
121.75 (Rwy 30)  
121.9 (Rwys 28L/R)



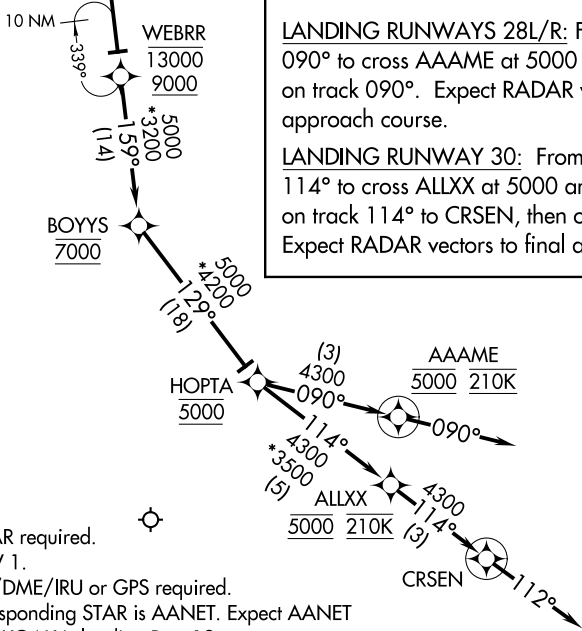
**ARRIVAL ROUTE DESCRIPTION**

RBUCL TRANSITION (RBUC.LWNDSR2)  
SPAMY TRANSITION (SPAMY.WNDSR2)

From WNDSR on track 159° to cross WEBRR between 9000 and 13000, then on track 159° to cross BOYYS at 7000, then on track 129° to cross HOPTA at 5000.

LANDING RUNWAYS 28L/R: From HOPTA on track 090° to cross AAAME at 5000 and at 210K, then on track 090°. Expect RADAR vectors to final approach course.

LANDING RUNWAY 30: From HOPTA on track 114° to cross ALLXX at 5000 and at 210K, then on track 114° to CRSEN, then on track 112°. Expect RADAR vectors to final approach course.



NOTE: RADAR required.  
NOTE: RNAV 1.  
NOTE: DME/DME/IRU or GPS required.  
NOTE: Corresponding STAR is AANET. Expect AANET when KOAK is landing Rwy 12.

NOTE: Chart not to scale.

SW-2, 20 MAR 2025 to 17 APR 2025

SW-2, 20 MAR 2025 to 17 APR 2025

# WNDSR TWO ARRIVAL (RNAV)