

WAAS CH 82712 W11A	APP CRS 112°	Rwy Idg 4808 TDZE 1487 Apt Elev 1497
--	------------------------	---

RNAV (GPS) RWY 11

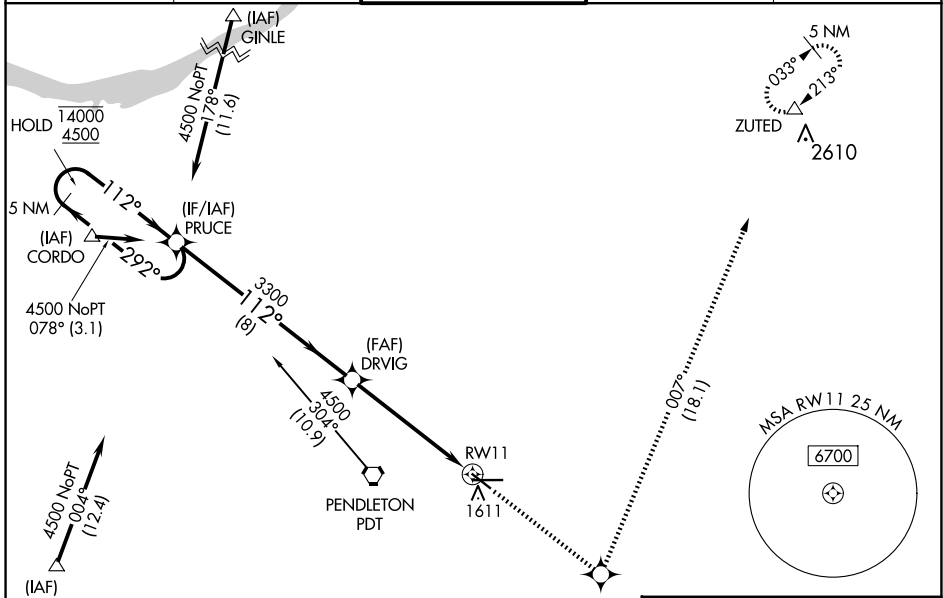
EASTERN OREGON RGNL AT PENDLETON (PDT)

RNP APCH.

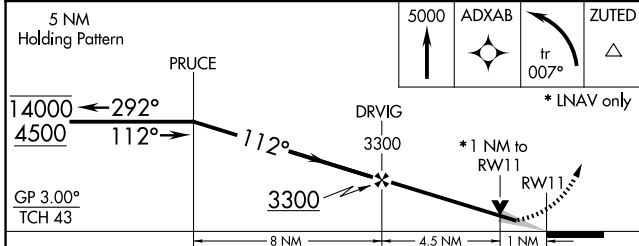
Baro-VNAV and VDP NA when using Walla Walla altimeter setting. For uncompensated Baro-VNAV systems, LNAV/VNAV NA below -17°C or above 54°C. When local altimeter setting not received, use Walla Walla altimeter setting and increase all DA/MDA 120 feet; VNAV all Cats visibility 1/8 SM, LNAV Cat C visibility 3/8 SM, and Cat D visibility 1/8 SM, Circling Cat C visibility 1/4 SM and Circling Cat D visibility 1/2 SM.

MISSED APPROACH: Climb to 5000 direct ADXAB and on track 007° to ZUTED and hold.

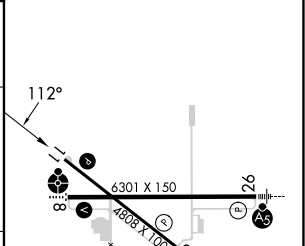
ASOS 118.325	SPOKANE APP CON * 133.15 379.15	PENDLETON TOWER * 119.7 (CTAF) 257.8	GND CON 121.9 257.8	UNICOM 122.95
------------------------	---	--	-------------------------------	-------------------------



ELEV 1497	D	TDZE 1487
-----------	----------	-----------



ELEV 1497	D	TDZE 1487
-----------	----------	-----------



CATEGORY	A	B	C	D
LPV DA	1737-1		250 (300-1)	
LNAV/VNAV DA	1850-1¼		363 (400-1¼)	
LNAV MDA	1860-1		373 (400-1)	
C CIRCLING	1920-1	1960-1	1980-1½	2200-2¼
	423 (500-1)	463 (500-1)	483 (500-1½)	703 (800-2¼)

REIL Rwy 11 and 29 **L**
MRL Rwy 11-29 **L**
HIRL Rwy 8-26 **L**

NW-1, 20 MAR 2025 to 17 APR 2025

NW-1, 20 MAR 2025 to 17 APR 2025