


WAAS CH <b>78412</b> W26A	APP CRS <b>254°</b>	Rwy Idg TDZE Apt Elev	<b>6301</b> <b>1487</b> <b>1497</b>
---------------------------------	------------------------	-----------------------------	---

# RNAV (GPS) RWY 26

EASTERN OREGON RGNL AT PENDLETON (PDT)

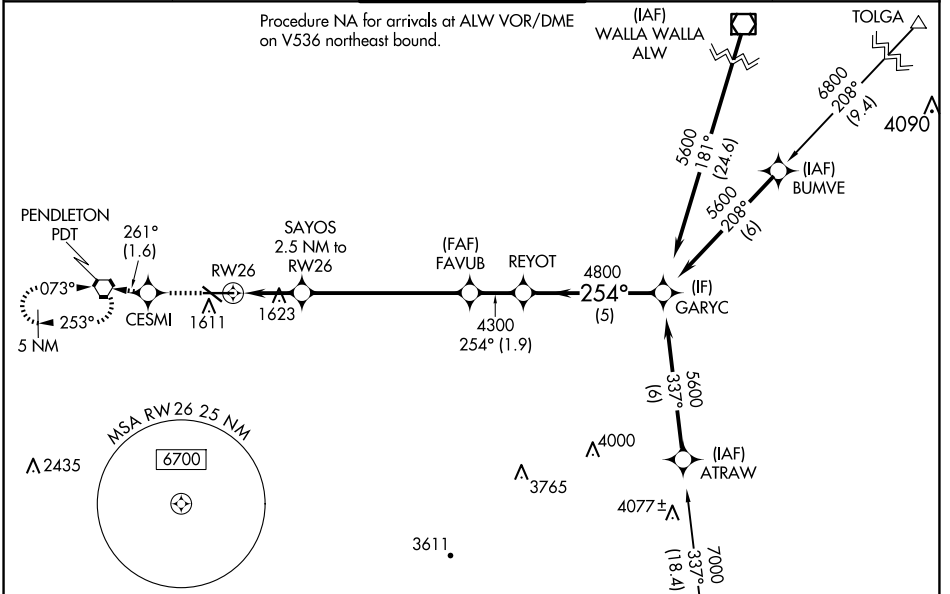
RNP APCH.

**⚠** Circling Rwy 11 NA at night. For uncompensated Baro-VNAV systems, LNAV/VNAV NA below -17°C or above 54°C. For inop ALS, increase LNAV/VNAV all Cats visibility to RVR 4500.  
#RVR 1800 authorized with the use of FD or AP or HUD to DA.

MALSR 

MISSED APPROACH: Climb to 4300 direct CESMI and on track 261° to PDT VORTAC and hold, continue climb-in-hold to 4300.

ASOS <b>118.325</b>	SPOKANE APP CON * <b>133.15 379.15</b>	PENDLETON TOWER * <b>119.7 (CTAF) 257.8</b>	GND CON <b>121.9 257.8</b>	UNICOM <b>122.95</b>
------------------------	---	--	-------------------------------	-------------------------



ELEV 1497	<b>D</b>	TDZE 1487
-----------	----------	-----------

Procedure NA for arrivals at LACED on V4 southeast bound.

4300	CESMI	Ir 261°	PDT	VGSI and RNAV glidepath not coincident (VGSI Angle 3.00/TCH 48).	
* LNAV only			SAYOS 2.5 NM to RW26	FAVUB 4300	REYOT 4800
RW26			* 1.1 NM to RW26	GARYC 5600	GP 3.00° TCH 55
1.1 NM			1.4 NM	6 NM	1.9 NM
5 NM					
CATEGORY	A		B		D
LPV DA#	1687/24		200 (200-½)		
LNAV/VNAV DA	1800/24		313 (400-½)		
LNAV MDA	1880/24 393 (400-½)		1880/40 393 (400-¾)		
<b>C</b> CIRCLING	1920-1 423 (500-1)	1960-1 463 (500-1)	1980-1½ 483 (500-1½)	2200-2¼ 703 (800-2¼)	

NW-1, 20 MAR 2025 to 17 APR 2025

NW-1, 20 MAR 2025 to 17 APR 2025