

VORTAC PDT 114.7 Chan 94	APP CRS 079°	Rwy Idg TDZE 1486 Apt Elev 1497
--	------------------------	---

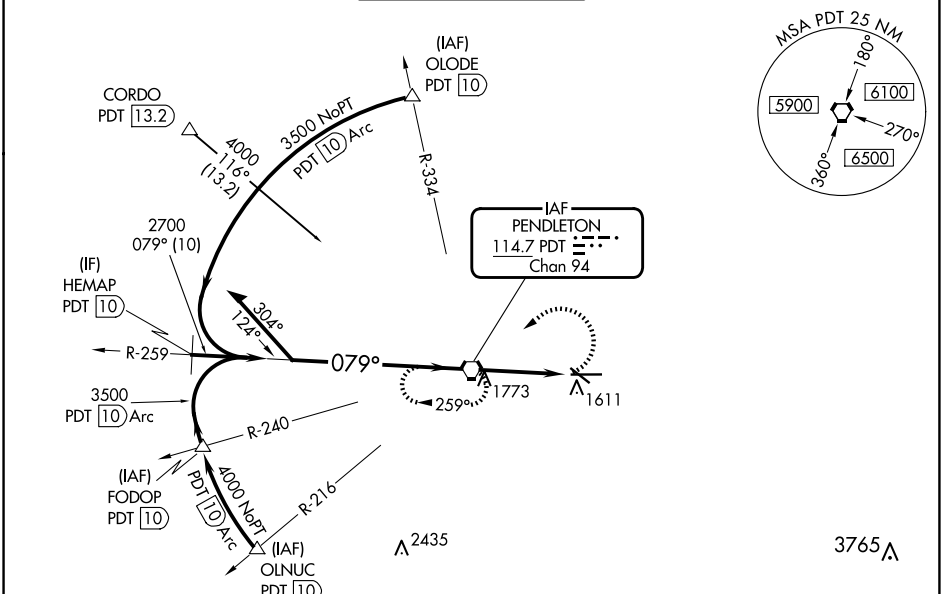
VOR RWY 8

EASTERN OREGON RGNL AT PENDLETON (PDT)

⚠ Circling to Rwy 11 NA at night. Rwy 8 helicopter visibility reduction below 3/4 SM NA. VDP NA when using Walla Walla altimeter setting. When local altimeter setting not received, use Walla Walla altimeter setting and increase all MDA 140 feet, increase S-8 Cat C/D visibility to 1 1/8 SM, Circling Cat C visibility 1/4 SM and Cat D visibility 1/2 SM. For inop ALS, increase S-8 Cat C visibility to 1 1/8 SM. For inop ALS when using Walla Walla altimeter setting, increase S-8 Cat C/D visibility to 2 SM.

ODALS
MISSED APPROACH:
Climbing left turn to 4000 direct PDT VORTAC and hold, continue climb-in-hold to 4000.

ASOS 118.325	SPOKANE APP CON * 133.15 379.15	PENDLETON TOWER * 119.7 (CTAF) 257.8	GND CON 121.9 257.8	UNICOM 122.95
------------------------	---	--	-------------------------------	-------------------------



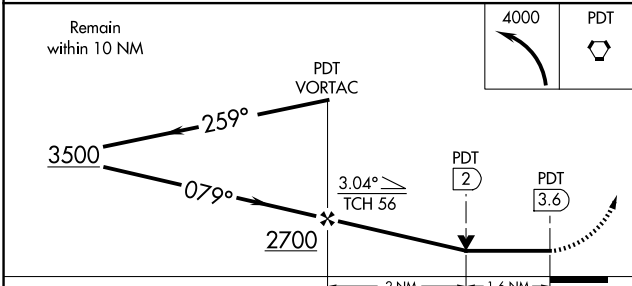
NW-1, 20 MAR 2025 to 17 APR 2025

NW-1, 20 MAR 2025 to 17 APR 2025

ELEV 1497	TDZE 1486
-----------	-----------

REIL Rwy 11 and 29
MIRL Rwy 11-29
HIRL Rwy 8-26

FAF to MAP 3.6 NM					
Knots	60	90	120	150	180
Min:Sec	3:36	2:24	1:48	1:26	1:12



CATEGORY	A	B	C	D
S-8	2040-3/4	554 (600-3/4)	2040-1 1/2 554 (600-1 1/2)	2040-1 3/4 554 (600-1 3/4)
C CIRCLING	2040-1	543 (600-1)	2040-1 1/8 543 (600-1 1/8)	2200-2 1/4 703 (800-2 1/4)