

ARLIN FOUR ARRIVAL

AL-322 (FAA)

PHOENIX, ARIZONA

SW-4, 20 MAR 2025 to 17 APR 2025

ARRIVAL ROUTE DESCRIPTION

BLYTHE TRANSITION (BLH.ARLIN4): From over BLH VORTAC on BLH R-089 and IWA R-256 to ARLIN INT. Thence. . . .

MOHAK TRANSITION (MOHAK.ARLIN4): From over MOHAK INT on GBN R-247 and BXK R-215 to HYDRR INT, then on IWA R-256 to ARLIN INT. Thence. . . .

PHOENIX SKY HARBOR INTL: Rwy 7L/R or 8: From over ARLIN, Expect vectors to final approach course; Rwy 25L/R or 26: From over ARLIN, on IWA R-256 to TUKEE. Expect vectors to final approach course prior to TUKEE.

SATELLITE AIRPORTS: Expect vectors after passing SCOLE or JUDTH.

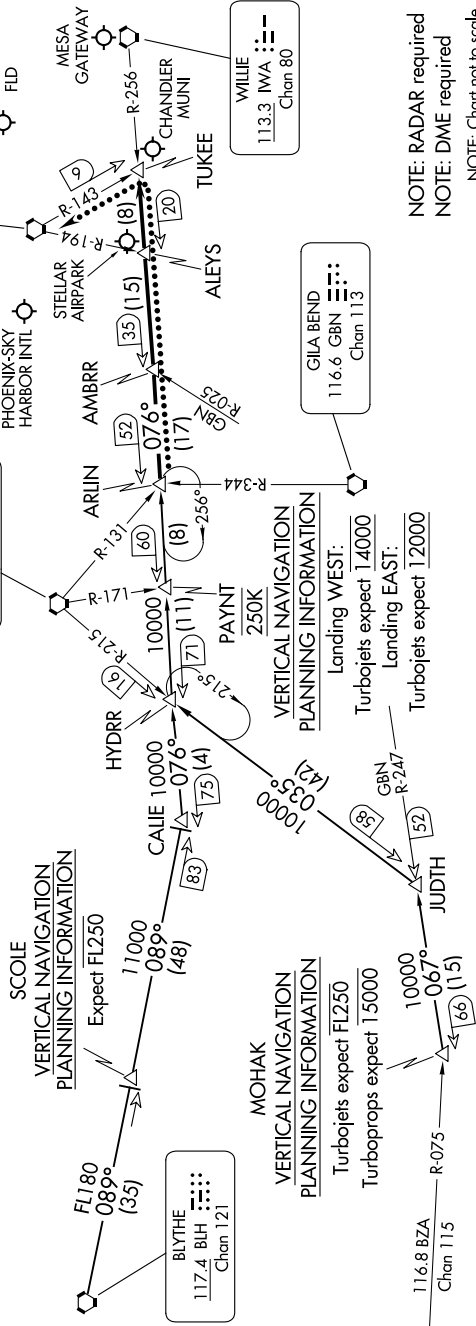
LOST COMMUNICATIONS: After ARLIN, on IWA R-256 and PXR R-143 to PXR VORTAC.

NOTE: BLYTHE Transition for turbojet aircraft FL240 and above.

Turbojet aircraft plan BLYTHE ARRIVAL at or below FL230.

NOTE: MOHAK Transition for turbojet and turbojet aircraft.

NOTE: Turbojets landing KPHX expect vectors after passing SCOLE or JUDTH.



ARLIN FOUR ARRIVAL

PHOENIX, ARIZONA

SW-4, 20 MAR 2025 to 17 APR 2025