

# BUNTR THREE ARRIVAL

PHOENIX APP CON  
128.65 353.9  
PHOENIX TOWER  
118.7 278.8 (Rwy 8-26)  
120.9 254.3 (Rwy 7L-25R, 7R-25L)  
GND CON  
119.75 269.2  
D-ATIS  
127.575

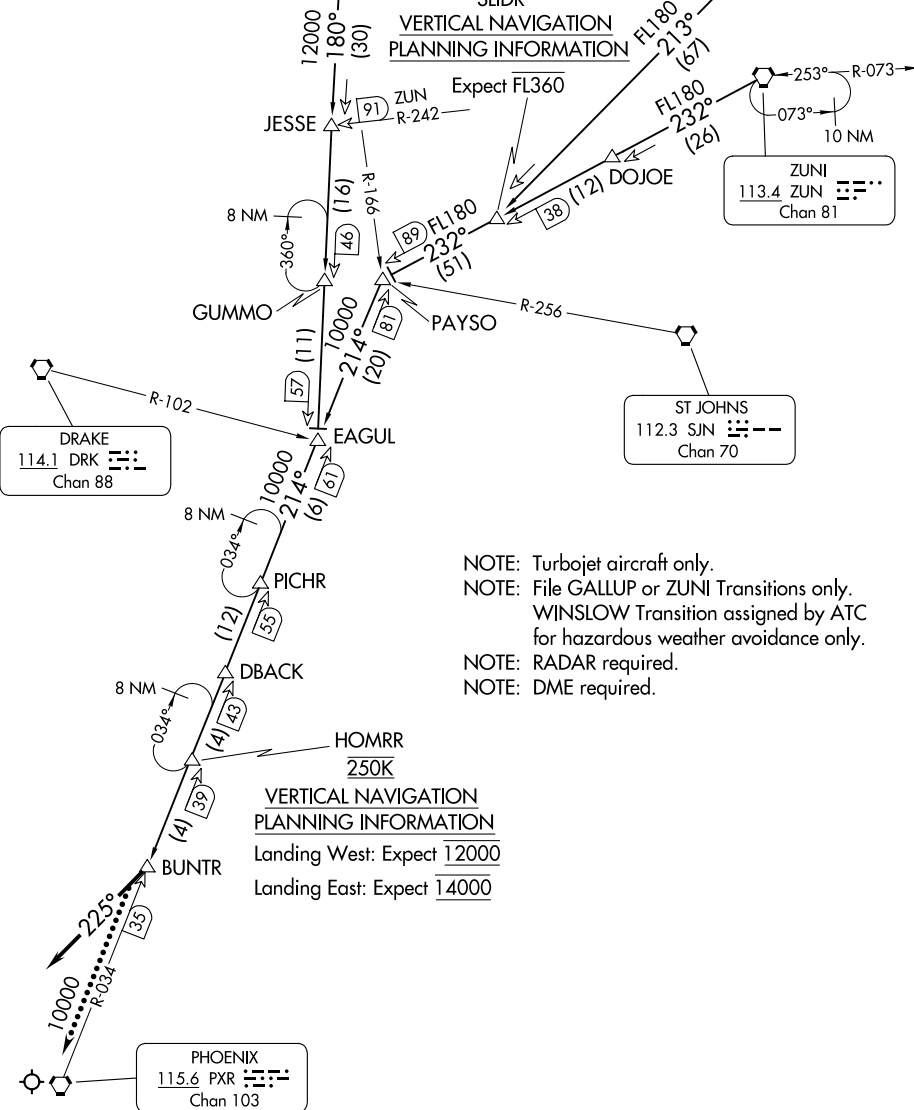
WINSLOW  
112.6 INW  
Chan 73

GALLUP  
115.1 GUP  
Chan 98

**VERTICAL NAVIGATION  
PLANNING INFORMATION**

SLIDR

Expect FL360



- NOTE: Turbojet aircraft only.
- NOTE: File GALLUP or ZUNI Transitions only.
- WINSLOW Transition assigned by ATC for hazardous weather avoidance only.
- NOTE: RADAR required.
- NOTE: DME required.

NOTE: Chart not to scale.

(CONTINUED ON FOLLOWING PAGE)

SW-4, 20 MAR 2025 to 17 APR 2025

SW-4, 20 MAR 2025 to 17 APR 2025

ARRIVAL ROUTE DESCRIPTION

GALLUP TRANSITION (GUP.BUNTR3): From over GUP VORTAC on GUP R-213 to SLIDR then on ZUN R-232 to PAYSO, then on PXR R-034 to BUNTR. Thence. . . .

WINSLOW TRANSITION (INW.BUNTR3): From over INW VORTAC on INW R-180 to EAGUL, then on PXR R-034 to BUNTR. Thence. . . .

ZUNI TRANSITION (ZUN.BUNTR3): From over ZUN VORTAC via ZUN R-232 to PAYSO, then via PXR R-034 to BUNTR. Thence. . . .

. . . . From BUNTR, fly heading 225°. Expect vectors to final approach course.

LOST COMMUNICATIONS: After BUNTR proceed direct PXR VORTAC.

SW-4, 20 MAR 2025 to 17 APR 2025

SW-4, 20 MAR 2025 to 17 APR 2025