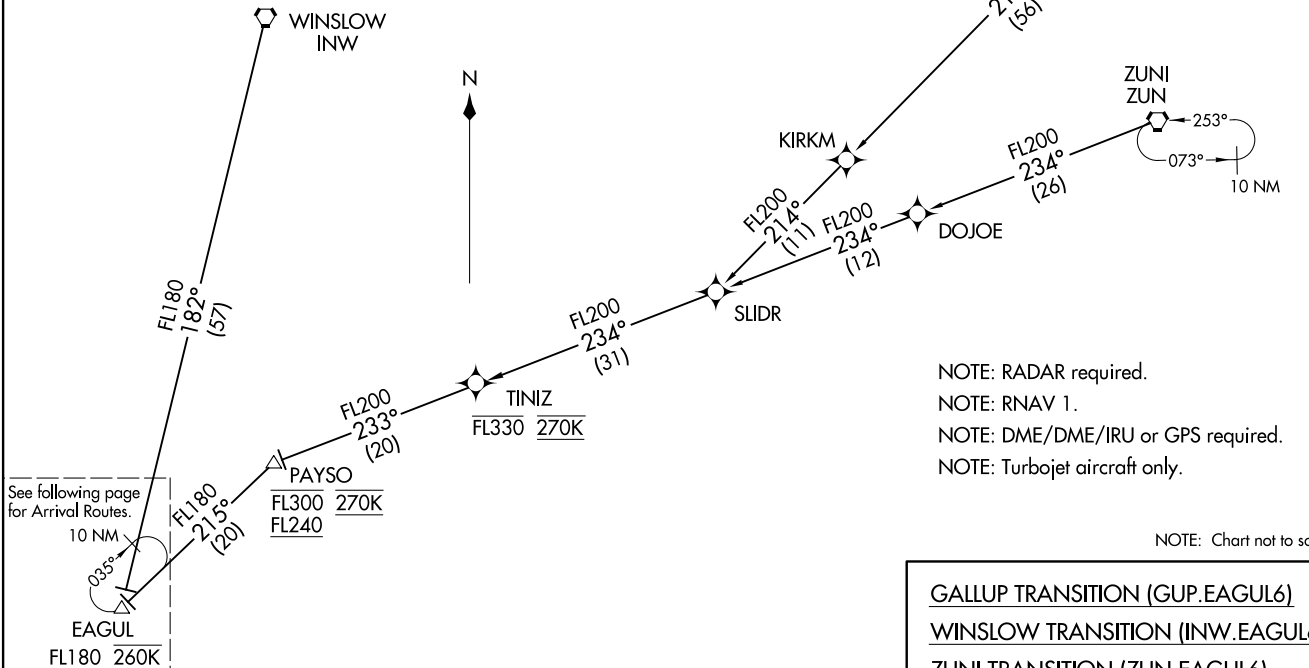


EAGUL SIX ARRIVAL (RNAV) Transition Routes  
(EAGUL.EAGUL6) 18SEP14

PHOENIX APP CON  
128.65 353.9  
PHOENIX TOWER  
118.7 278.8 (Rwy 8-26)  
120.9 254.3 (Rwy 7L-25R, 7R-25L)  
GND CON  
119.75 269.2 (North)  
132.55 269.2 (South)  
D-ATIS  
127.575

NOTE: GALLUP and ZUNI TRANSITIONS: For non-GPS equipped aircraft INW DME must be operational.  
NOTE: LANDING EAST: For non-GPS equipped aircraft PXR and IWA DMEs must be operational.  
NOTE: File GALLUP or ZUNI TRANSITIONS only. WINSLOW TRANSITION assigned by ATC for hazardous weather avoidance only.



(CONTINUED ON FOLLOWING PAGE)

NOTE: RADAR required.  
NOTE: RNAV 1.  
NOTE: DME/DME/IRU or GPS required.  
NOTE: Turbojet aircraft only.

NOTE: Chart not to scale.

GALLUP TRANSITION (GUP.EAGUL6)  
WINSLOW TRANSITION (INW.EAGUL6)  
ZUNI TRANSITION (ZUN.EAGUL6)

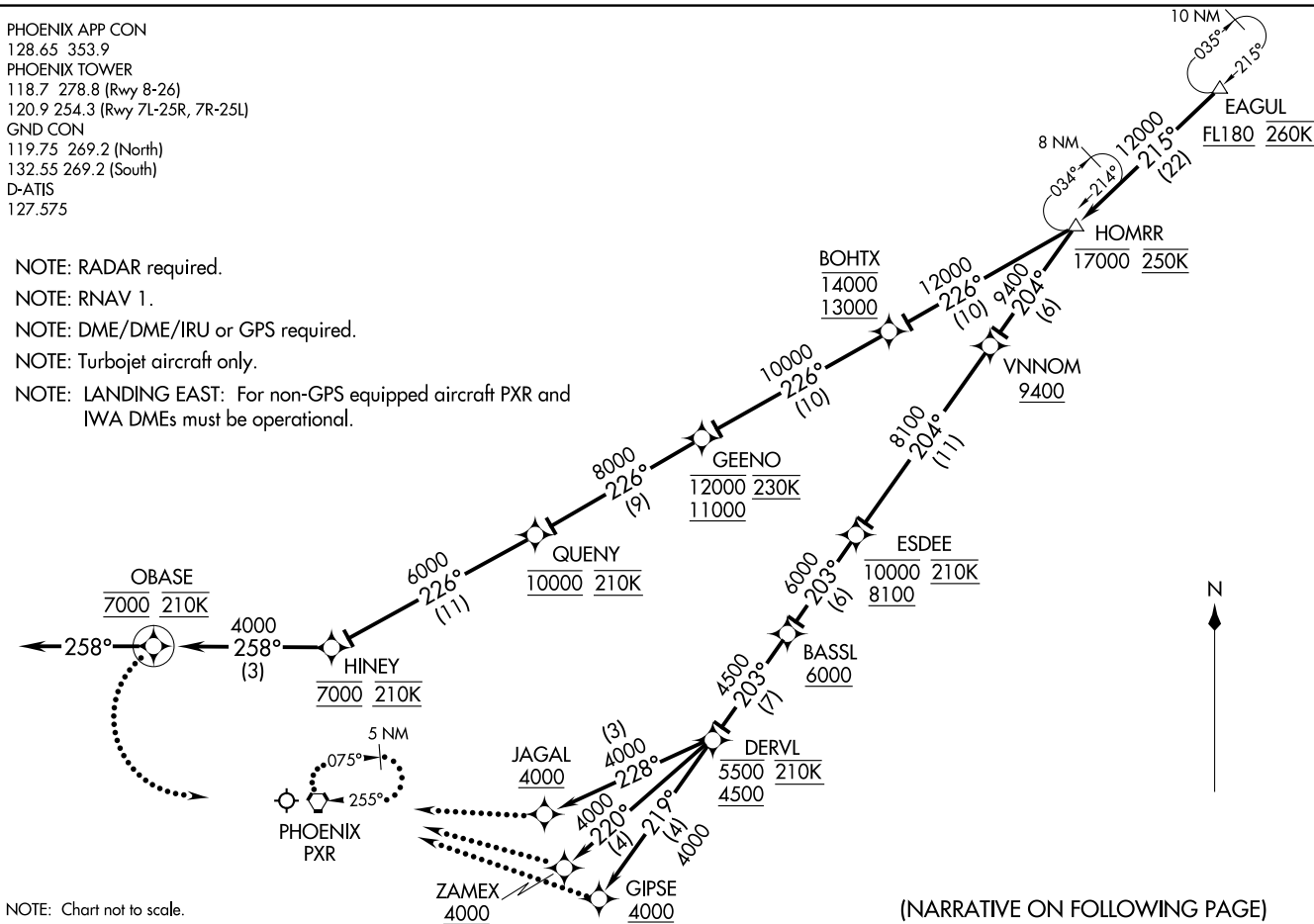
PHOENIX SKY HARBOR INTL (PHX)  
PHOENIX, ARIZONA

(EAGUL.EAGUL6) 17117  
EAGUL SIX ARRIVAL (RNAV) Transition Routes  
AL-322 (FAA)

PHOENIX SKY HARBOR INTL (PHX)  
PHOENIX, ARIZONA

PHOENIX APP CON  
 128.65 353.9  
 PHOENIX TOWER  
 118.7 278.8 (Rwy 8-26)  
 120.9 254.3 (Rwy 7L-25R, 7R-25L)  
 GND CON  
 119.75 269.2 (North)  
 132.55 269.2 (South)  
 D-ATIS  
 127.575

- NOTE: RADAR required.
- NOTE: RNAV 1.
- NOTE: DME/DME/IRU or GPS required.
- NOTE: Turbojet aircraft only.
- NOTE: LANDING EAST: For non-GPS equipped aircraft PXR and IWA DMEs must be operational.



NOTE: Chart not to scale.

(NARRATIVE ON FOLLOWING PAGE)

EAGUL SIX ARRIVAL (RNAV) Arrival Routes  
 (EAGUL EAGUL6) 18SEP14

PHOENIX SKY HARBOR INTL (PHX)  
 PHOENIX, ARIZONA

(EAGUL EAGUL6) 17117  
 EAGUL SIX ARRIVAL (RNAV) Arrival Routes  
 AL-322 (FAA)

PHOENIX SKY HARBOR INTL (PHX)  
 PHOENIX, ARIZONA

ARRIVAL ROUTE DESCRIPTION

From EAGUL on track 215° to cross HOMRR at or below 17000 at 250K.

LANDING RUNWAYS 7L, 7R, 8: From HOMRR on track 226° to cross BOHTX at/above 13000 and at/below 14000, then on track 226° to cross GEENO at/above 11000 and at/below 12000 and at 230K, then on track 226° to cross QUENY at 10000 and at 210K, then on track 226° to cross HINEY at 7000 and at 210K, then on track 258° to cross OBASE at 7000 and at 210K, then on track 258°. Expect RADAR vectors to final approach course.

LANDING RUNWAY 25L: From HOMRR on track 204° to cross VNNOM at/above 9400, then on track 204° to cross ESDEE at/above 8100 and at/below 10000 and at 210K, then on track 203° to cross BASSL at/above 6000, then on track 203° to cross DERVL at/above 4500 and at/below 5500 and at 210K, then on track 219° to cross GIPSE at/above 4000. Expect ILS or LOC RWY 25L approach or RADAR vectors to final approach course.

LANDING RUNWAY 25R: From HOMRR on track 204° to cross VNNOM at/above 9400, then on track 204° to cross ESDEE at/above 8100 and at/below 10000 and at 210K, then on track 203° to cross BASSL at/above 6000, then on track 203° to cross DERVL at/above 4500 and at/below 5500 and at 210K, then on track 220° to cross ZAMEX at/above 4000. Expect RNAV (GPS) Y RWY 25R approach or RADAR vectors to final approach course.

LANDING RUNWAY 26: From HOMRR on track 204° to cross VNNOM at/above 9400, then on track 204° to cross ESDEE at/above 8100 and at/below 10000 and at 210K, then on track 203° to cross BASSL at/above 6000, then on track 203° to cross DERVL at/above 4500 and at/below 5500 at 210K, then on track 228° to cross JAGAL at/above 4000. Expect ILS or LOC RWY 26 approach or RADAR vectors to final approach course.

LOST COMMUNICATIONS

LANDING RUNWAY 7L: After OBASE turn left, intercept and execute RWY 7L ILS approach. If unable, proceed direct PXR VORTAC and hold, maintain 9000.

LANDING RUNWAY 7R: After OBASE turn left, intercept and execute RWY 7R ILS approach. If unable, proceed direct PXR VORTAC and hold, maintain 9000.

LANDING RUNWAY 8: After OBASE turn left, intercept and execute RWY 8 ILS approach. If unable, proceed direct PXR VORTAC and hold, maintain 9000.

LANDING RUNWAY 25L: At GIPSE, intercept and execute RWY 25L ILS approach. If unable, proceed direct PXR VORTAC and hold, maintain 9000.

LANDING RUNWAY 25R: At ZAMEX, intercept and execute RWY 25R RNAV (GPS) approach. If unable, proceed direct PXR VORTAC and hold, maintain 9000.

LANDING RUNWAY 26: At JAGAL, intercept and execute RWY 26 ILS approach. If unable, proceed direct PXR VORTAC and hold, maintain 9000.

SW-4, 20 MAR 2025 to 17 APR 2025

SW-4, 20 MAR 2025 to 17 APR 2025