

(FORPE1 .FORPE) 24MAY18  
**FORPE ONE DEPARTURE (RNAV)**

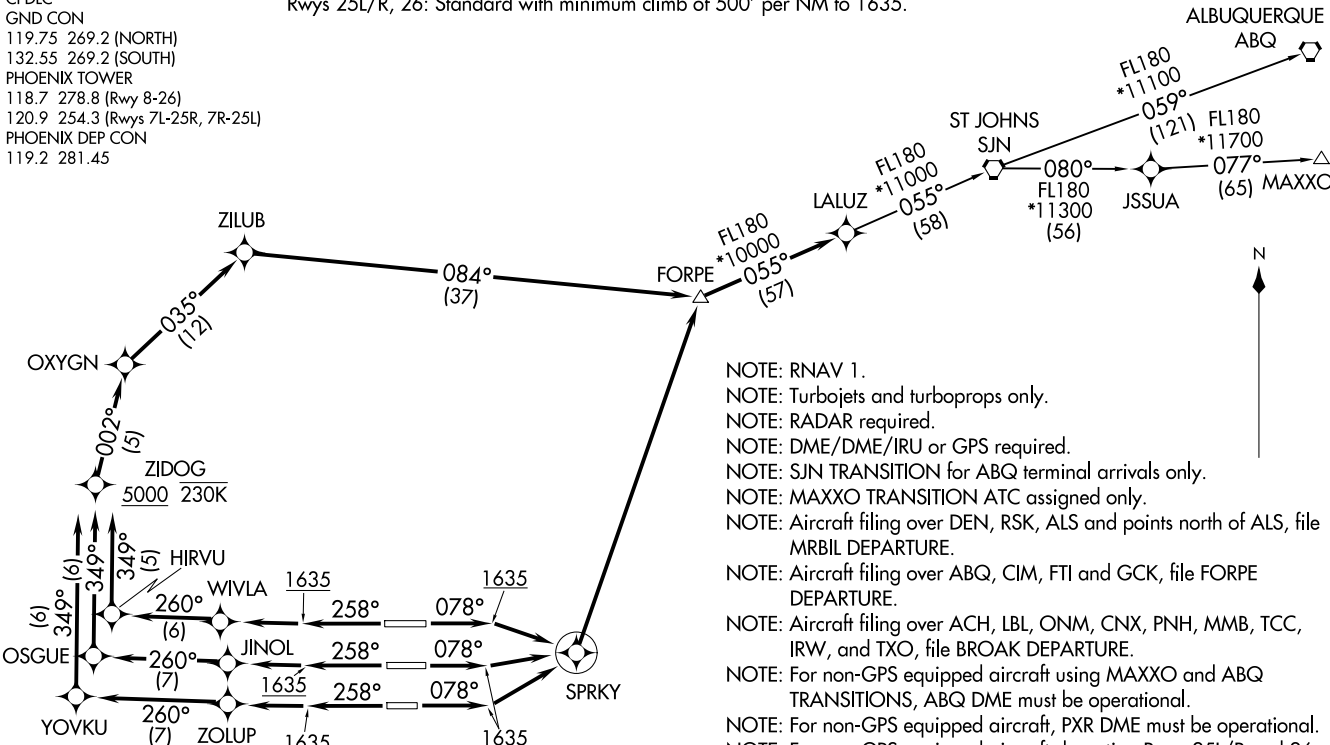
PHOENIX, ARIZONA  
**PHOENIX SKY HARBOR INTL (PHX)**

D-ATIS  
 127.575  
 CLNC DEL  
 118.1 269.2  
 CPDLC  
 GND CON  
 119.75 269.2 (NORTH)  
 132.55 269.2 (SOUTH)  
 PHOENIX TOWER  
 118.7 278.8 (Rwy 8-26)  
 120.9 254.3 (Rwys 7L-25R, 7R-25L)  
 PHOENIX DEP CON  
 119.2 281.45

**TAKEOFF MINIMUMS**

Rwys 7L/R, 8: Standard with minimum climb of 500' per NM to 1635  
 then minimum climb of 250' per NM to 7300.  
 Rwys 25L/R, 26: Standard with minimum climb of 500' per NM to 1635.

**TOP ALTITUDE:**  
**8000**



- NOTE: RNAV 1.
- NOTE: Turbojets and turboprops only.
- NOTE: RADAR required.
- NOTE: DME/DME/IRU or GPS required.
- NOTE: SJN TRANSITION for ABQ terminal arrivals only.
- NOTE: MAXXO TRANSITION ATC assigned only.
- NOTE: Aircraft filing over DEN, RSK, ALS and points north of ALS, file MRBIL DEPARTURE.
- NOTE: Aircraft filing over ABQ, CIM, FTI and GCK, file FORPE DEPARTURE.
- NOTE: Aircraft filing over ACH, LBL, ONM, CNX, PNH, MMB, TCC, IRW, and TXO, file BROAK DEPARTURE.
- NOTE: For non-GPS equipped aircraft using MAXXO and ABQ TRANSITIONS, ABQ DME must be operational.
- NOTE: For non-GPS equipped aircraft, PXR DME must be operational.
- NOTE: For non-GPS equipped aircraft departing Rwys 25L/R and 26, IWA and TFD DMEs must be operational.

(NARRATIVE ON FOLLOWING PAGE)

NOTE: Chart not to scale.

(FORPE1 .FORPE) 18144  
**FORPE ONE DEPARTURE (RNAV)**

PHOENIX, ARIZONA  
**PHOENIX SKY HARBOR INTL (PHX)**

AL-322 (FAA)



DEPARTURE ROUTE DESCRIPTION

TAKEOFF RUNWAYS 7L, 7R, 8: Climb heading 078° to 1635, then direct SPRKY, then left turn direct FORPE, thence . . . .

TAKEOFF RUNWAY 25L: Climb heading 258° to 1635, then direct ZOLUP, then on track 260° to YOVKU, then on track 349° to cross ZIDOG at or above 5000 and at/below 230K, then on track 002° to OXYGN, then on track 035° to ZILUB, then on track 084° to FORPE, thence . . . .

TAKEOFF RUNWAY 25R: Climb heading 258° to 1635, then direct JINOL, then on track 260° to OSGUE, then on track 349° to cross ZIDOG at or above 5000 and at/below 230K, then on track 002° to OXYGN, then on track 035° to ZILUB, then on track 084° to FORPE, thence . . . .

TAKEOFF RUNWAY 26: Climb heading 258° to 1635, then direct WIVLA, then on track 260° to HIRVU, then on track 349° to cross ZIDOG at or above 5000 and at/below 230K, then on track 002° to OXYGN, then on track 035° to ZILUB, then on track 084° to FORPE, thence . . . .

. . . . on track 055° to LALUZ, then on (transition). Maintain 8000, expect higher altitude 3 minutes after departure.

ALBUQUERQUE TRANSITION (FORPE1.ABQ)

MAXXO TRANSITION (FORPE1.MAXXO)

ST JOHNS TRANSITION (FORPE1.SJN)

SW-4, 20 MAR 2025 to 17 APR 2025

SW-4, 20 MAR 2025 to 17 APR 2025