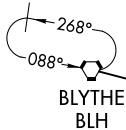


HYDRR ONE ARRIVAL (RNAV)  
(HYDRR.HYDRR1) 18SEP14

Transition Routes

PHOENIX, ARIZONA  
PHOENIX SKY HARBOR INTL (PHX)

12 NM



- NOTE: RADAR required.
- NOTE: RNAV 1.
- NOTE: DME/DME/IRU or GPS required.
- NOTE: For turbojet aircraft only.
- NOTE: SALOM TRANSITION for aircraft FL230 and below.

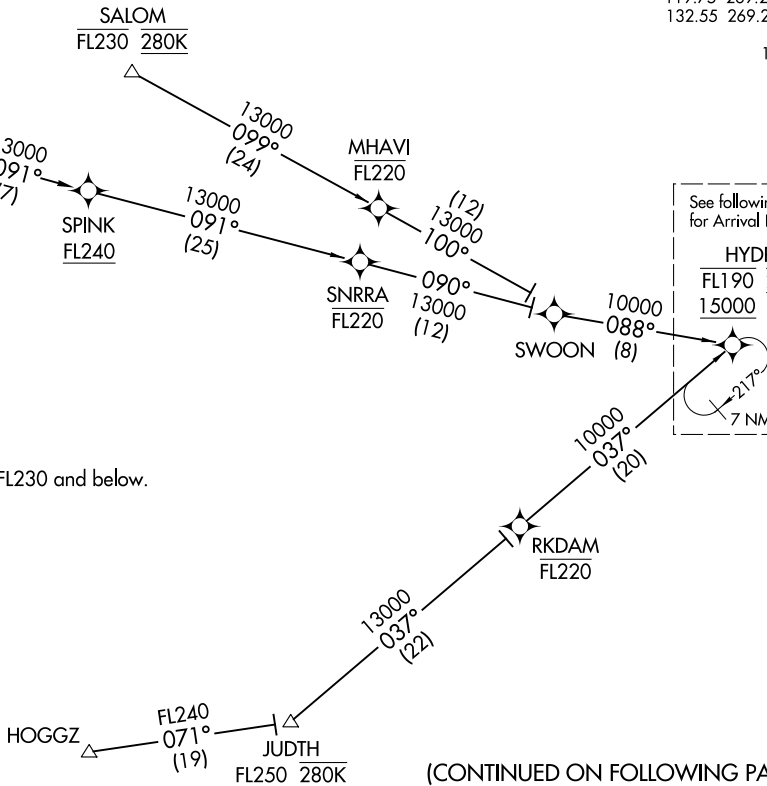
NOTE: Chart not to scale.

- BLYTHE TRANSITION (BLH.HYDRR1)
- HOGGZ TRANSITION (HOGGZ.HYDRR1)
- SALOM TRANSITION (SALOM.HYDRR1)

PHOENIX APP CON  
124.1 256.9  
PHOENIX TOWER  
118.7 278.8 (Rwy 8-26)  
120.9 254.3 (Rwy 7R-25L, 7L-25R)  
GND CON  
119.75 269.2 (North)  
132.55 269.2 (South)  
D-ATIS  
127.575

See following page  
for Arrival Routes.

**HYDRR**  
FL190 265K  
15000



(CONTINUED ON FOLLOWING PAGE)

(HYDRR.HYDRR1) 17117

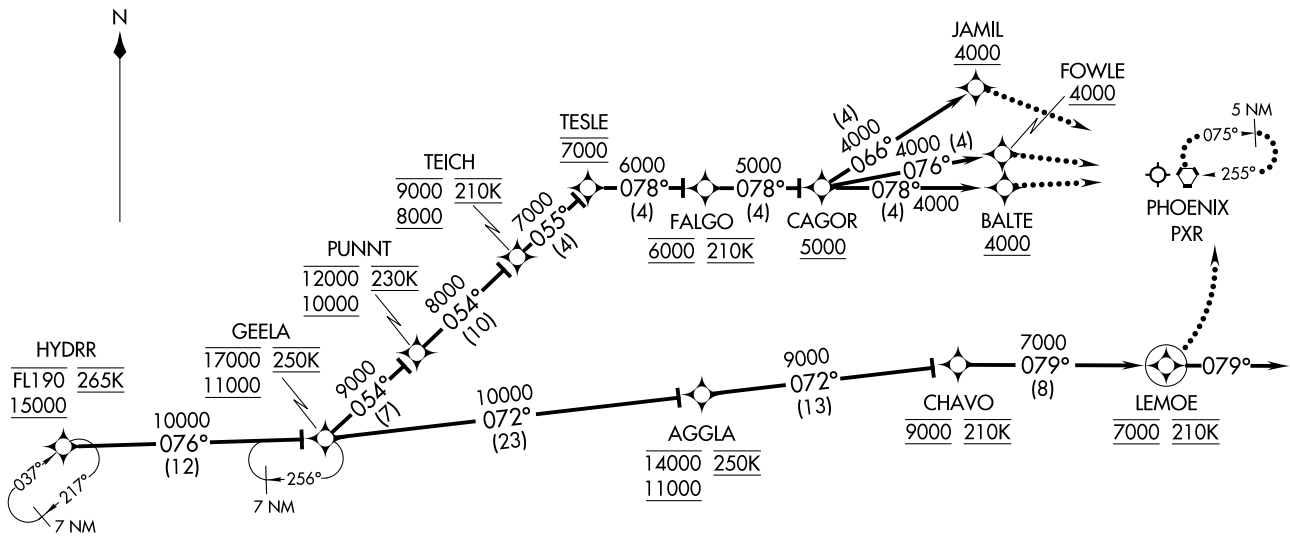
Transition Routes

PHOENIX SKY HARBOR INTL (PHX)  
PHOENIX, ARIZONA

AL-322 (FAA)

NOTE: RADAR required.  
 NOTE: RNAV 1.  
 NOTE: DME/DME/IRU or GPS required.  
 NOTE: For turbojet aircraft only.

PHOENIX APP CON  
 124.1 256.9  
 PHOENIX TOWER  
 118.7 278.8 (Rwy 8-26)  
 120.9 254.3 (Rwy 7R-25L, 7L-25R)  
 GND CON  
 119.75 269.2 (North)  
 132.55 269.2 (South)  
 D-ATIS  
 127.575



(NARRATIVE ON FOLLOWING PAGE)

NOTE: Chart not to scale.

HYDRR ONE ARRIVAL (RNAV) Arrival Routes  
 (HYDRR, HYDRR1) 18SEP14  
 PHOENIX SKY HARBOR INTL (PHX)  
 PHOENIX, ARIZONA

(HYDRR, HYDRR1) 17117  
 HYDRR ONE ARRIVAL (RNAV) Arrival Routes  
 AL-322 (FAA)  
 PHOENIX SKY HARBOR INTL (PHX)  
 PHOENIX, ARIZONA

ARRIVAL ROUTE DESCRIPTION

From HYDRR on track 076° track to cross GEELA at/above 11000 and at/below 17000 at 250K.

LANDING RUNWAY 7L: From GEELA on track 054° to cross PUNNT at/above 10000 and at/below 12000 and at 230K, then on track 054° to cross TEICH at/above 8000 and at/below 9000 and at 210K, then on track 055° to cross TESLE at 7000, then on track 078° to cross FALGO at 6000 and at 210K, then on track 078° to cross CAGOR at/above 5000, then on track 076° to cross FOWLE at/above 4000. Expect ILS RWY 7L approach or RADAR vectors to final approach course.

LANDING RUNWAY 7R: From GEELA on track 054° to cross PUNNT at/above 10000 and at/below 12000 and at 230K, then on track 054° to cross TEICH at/above 8000 and at/below 9000 and at 210K, then on track 055° to cross TESLE at 7000, then on track 078° to cross FALGO at 6000 and at 210K, then on track 078° to cross CAGOR at/above 5000, then on track 078° to cross BALTE at/above 4000. Expect ILS RWY 7R approach or RADAR vectors to final approach course.

LANDING RUNWAY 8: From GEELA on track 054° to cross PUNNT at/above 10000 and at/below 12000 and at 230K, then on track 054° to cross TEICH at/above 8000 and at/below 9000 and at 210K, then on track 055° to cross TESLE at 7000, then on track 078° to cross FALGO at 6000 and at 210K, then on track 078° to cross CAGOR at/above 5000, then on track 066° to cross JAMIL at/above 4000. Expect ILS RWY 8 approach or RADAR vectors to final approach course.

LANDING RUNWAYS 25L, 25R, 26: From GEELA on track 072° to cross AGGLA at/above 11000 and at/below 14000 and at 250K, then on track 072° to cross CHAVO at 9000 and at 210K, then on track 079° to cross LEMOE at 7000 at 210K, then on track 079°. Expect RADAR vectors to final approach course.

LOST COMMUNICATIONS

LANDING RUNWAY 7L: At FOWLE intercept and execute RWY 7L ILS approach. If unable, proceed direct PXR VORTAC and hold, maintain 9000.

LANDING RUNWAY 7R: At BALTE intercept and execute RWY 7R ILS approach. If unable, proceed direct PXR VORTAC and hold, maintain 9000.

LANDING RUNWAY 8: At JAMIL intercept and execute RWY 8 ILS approach. If unable, proceed direct PXR VORTAC and hold, maintain 9000.

LANDING RUNWAY 25L: At LEMOE turn left, intercept and execute RWY 25L ILS approach. If unable, proceed direct PXR VORTAC and hold, maintain 9000.

LANDING RUNWAY 25R: At LEMOE turn left, intercept and execute RWY 25R RNAV (GPS) approach. If unable, proceed direct PXR VORTAC and hold, maintain 9000.

LANDING RUNWAY 26: At LEMOE, turn left, intercept and execute RWY 26 ILS approach. If unable, proceed direct PXR VORTAC and hold, maintain 9000.