

WAAS CH <b>82211</b> <b>W25B</b>	APP CRS <b>258°</b>	Rwy Idg TDZE Apt Elev	<b>7800</b> <b>1126</b> <b>1135</b>
--	------------------------	-----------------------------	---

# RNAV (GPS) Y RWY 25L

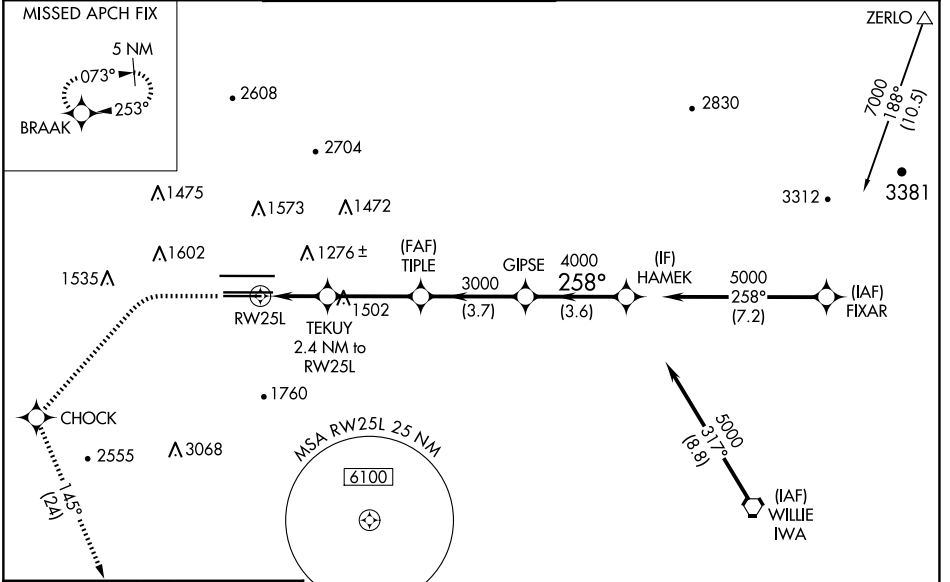
PHOENIX SKY HARBOR INTL (PHX)

RNP APCH-GPS.

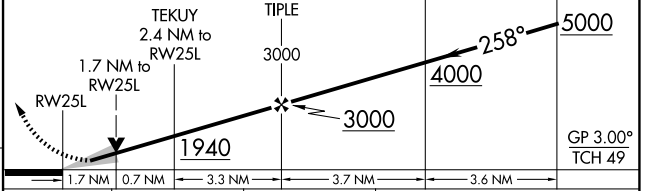
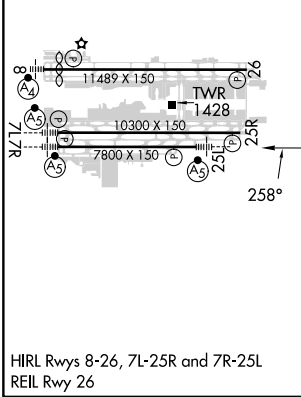
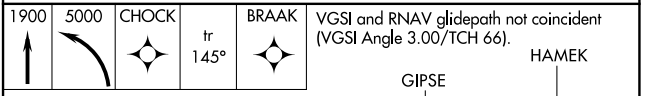
Simultaneous approach authorized. LNAV procedure NA during simultaneous operations. Use of FD or AP required during simultaneous operations. For uncompensated Baro-VNAV systems, procedure NA below 2°C or above 54°C. For inop ALS, increase visibility LPV all Cats to 1 SM, LNAV/VNAV all Cats to 1½ SM and LNAV Cats C/D 1¾ SM.

MALSR MISSED APPROACH: Climb to 1900 then climbing left turn to 5000 direct CHOCK and on track 145° to BRAAK and hold.

D-ATIS <b>127.575</b>	PHOENIX APP CON <b>128.65 353.9</b>	PHOENIX TOWER <b>118.7 278.8</b> (Rwy 8-26) <b>120.9 254.3</b> (Rwy 7L-25R, 7R-25L)	GND CON <b>119.75 269.2</b> (N) <b>132.55 269.2</b> (S)	CLNC DEL <b>118.1 269.2</b>	CPDLC
--------------------------	--	---	---	--------------------------------	-------



ELEV 1135	<b>D</b>	TDZE 1126
-----------	----------	-----------



CATEGORY	A	B	C	D
LPV DA	1449-½ 323 (400-½)			
LNAV/VNAV DA	1589-1 463 (500-1)			1674-1½ 548 (600-1½)
LNAV MDA	1740-½ 614 (700-½)		1740-1¾ 614 (700-1¾)	
<b>C</b> CIRCLING	1740-1 605 (700-1)		2040-2¾ 1205 (1300-3)	

SW-4, 20 MAR 2025 to 17 APR 2025

SW-4, 20 MAR 2025 to 17 APR 2025