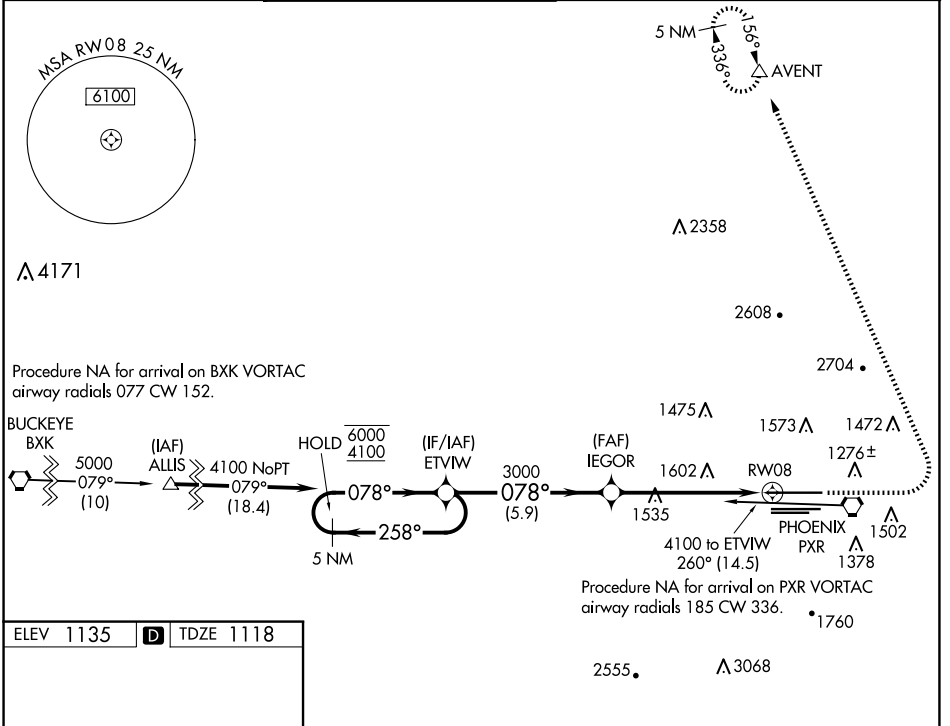


WAAS CH 86611 W08A	APP CRS 078°	Rwy Idg 10591 TDZE 1118 Apt Elev 1135
--	------------------------	--

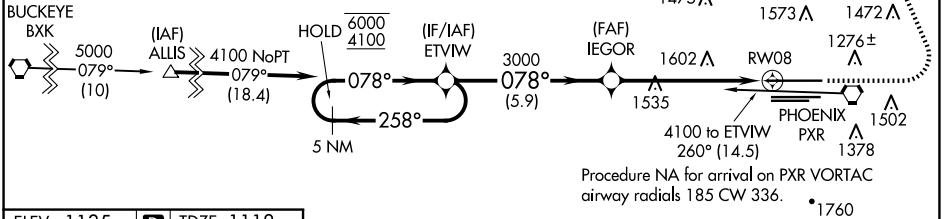
RNAV (GPS) Y RWY 8

PHOENIX SKY HARBOR INTL (PHX)

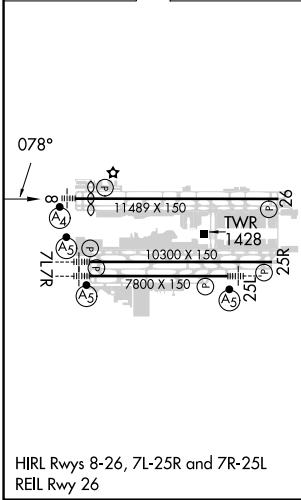
RNP APCH - GPS.		MALSF	MISSED APPROACH: Climb to 3000 then climbing left turn to 5000 direct AVENT and hold.		
<p>⚠ Simultaneous approach authorized. LNAV procedure NA during simultaneous operations. Inop tabs does not apply to LPV all Cats. For inop ALS, increase LNAV Cats C and D visibility to 2 SM.</p>					
D-ATIS 127.575	PHOENIX APP CON 128.65 353.9	PHOENIX TOWER 118.7 278.8 (Rwy 8-26) 120.9 254.3 (Rwy 7L-25R, 7R-25L)	GND CON 119.75 269.2 (N) 132.55 269.2 (S)	CLNC DEL 118.1 269.2	CPDLC



Procedure NA for arrival on BXX VORTAC airway radials 077 CW 152.



ELEV 1135	D	TDZE 1118
-----------	----------	-----------



HIRL RWys 8-26, 7L-25R and 7R-25L
REL Rwy 26

<p>5 NM Holding Pattern</p> <p>6000 ← 258°</p> <p>4100 → 078°</p> <p>GP 3.00° TCH 54</p>				<p>VGSI and RNAV glidepath not coincident (VGSI Angle 3.00/TCH 69).</p> <p>3000 5000 AVENT</p> <p>ETVIW IEGOR 3000 2.1 NM to RWY 8</p> <p>5.9 NM 3.6 NM 2.1</p>			
CATEGORY	A	B	C	D			
LPV DA	1368-3/4 250 (300-3/4)						
LNAV MDA	1860-3/4 742 (800-3/4)	1860-1 742 (800-1)	1860-1 7/8 742 (800-1 7/8)				
C CIRCLING	1860-1 725 (800-1)	1860-1 1/4 725 (800-1 1/4)	2040-2 3/4 905 (1000-2 3/4)	2340-3 1205 (1300-3)			

SW-4, 20 MAR 2025 to 17 APR 2025

SW-4, 20 MAR 2025 to 17 APR 2025