

HHOOD FIVE ARRIVAL (RNAV) Transition Routes
(HHOOD.HHOOD5) 31OCT24

PORTLAND APP CON
124.35 299.2
D-ATIS
128.35 269.9
GND CON
121.9 348.6
PORTLAND TOWER
118.7 257.8 (Rwy 10L-28R)
123.775 251.125 (Rwys 3-21, 10R-28L)

RNAV 1 - DME/DME/IRU or GPS.

RADAR required.

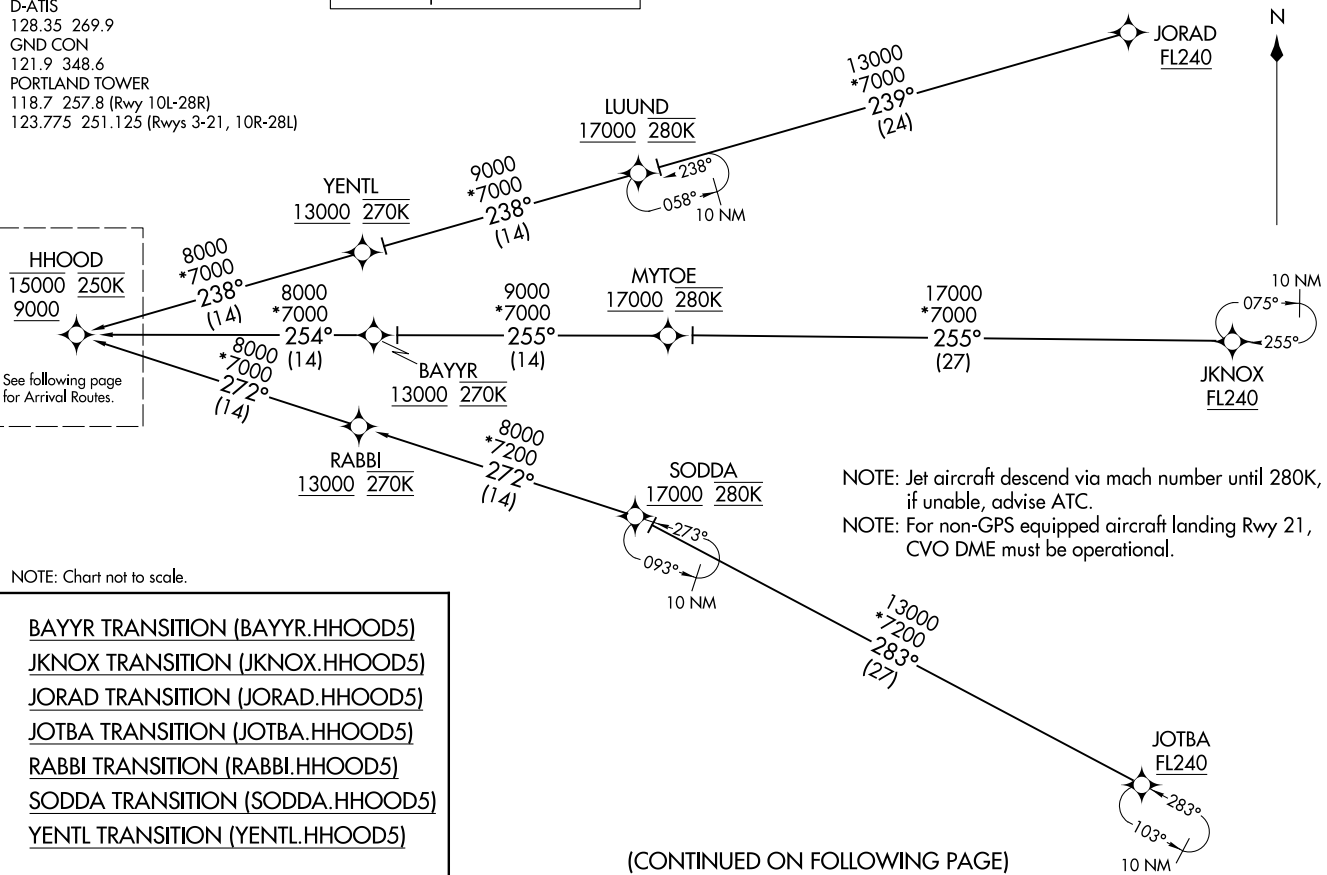
HHOOD
15000 250K
9000

See following page for Arrival Routes.

NOTE: Chart not to scale.

- BAYYR TRANSITION (BAYYR.HHOOD5)
- JKNOX TRANSITION (JKNOX.HHOOD5)
- JORAD TRANSITION (JORAD.HHOOD5)
- JOTBA TRANSITION (JOTBA.HHOOD5)
- RABBI TRANSITION (RABBI.HHOOD5)
- SODDA TRANSITION (SODDA.HHOOD5)
- YENTL TRANSITION (YENTL.HHOOD5)

PORTLAND, OREGON
PORTLAND INTL (PDX)



HHOOD FIVE ARRIVAL (RNAV) Transition Routes
(HHOOD.HHOOD5) 24305
AL-330 (FAA)

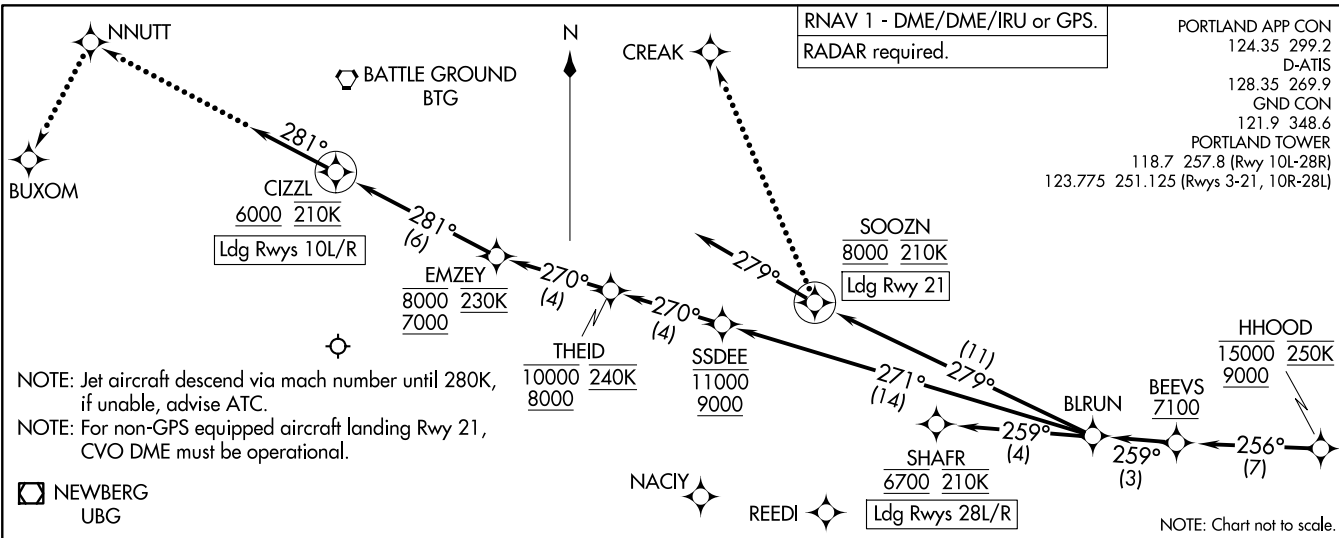
PORTLAND INTL (PDX)
PORTLAND, OREGON

(CONTINUED ON FOLLOWING PAGE)

HHOOD.FIVE ARRIVAL (RNAV) (HHOOD.HHOOD5) 31OCT24

Arrival Routes

PORTLAND, OREGON
PORTLAND INTL (PDX)



NOTE: Jet aircraft descend via mach number until 280K, if unable, advise ATC.
NOTE: For non-GPS equipped aircraft landing Rwy 21, CVO DME must be operational.

NEWBERG UBG

ARRIVAL ROUTE DESCRIPTION

From HHOOD on track 256° to cross BEEVS at or above 7100, then on track 259° to BLRUN.
LANDING RUNWAYS 10L/R: From BLRUN on track 271° to cross SSDEE between 9000 and 11000, then on track 270° to cross THEID between 8000 and 10000 and at 240K, then on track 270° to cross EMZEY between 7000 and 8000 and at 230K, then on track 281° to cross CIZZL at or above 6000 and at 210K, then on track 281°. Expect RADAR vectors to final approach course.
LANDING RUNWAY 21: From BLRUN on track 279° to cross SOOZN at 8000 and at 210K, then on track 279°. Expect RADAR vectors to final approach course.
LANDING RUNWAYS 28L/R: From BLRUN on track 259° to cross SHAFR at 6700 and at 210K. Expect RNAV or ILS RWY 28L/R approach.
LOST COMMUNICATIONS
 Maintain Rwy transition terminus altitude until established on approach procedure.
RUNWAYS 10L/R: After CIZZL, proceed to NNUTT, then left turn to BUXOM, conduct the ILS or LOC RWY 10L approach.
RUNWAY 21: After SOOZN turn right to CREAK and proceed on the LOC/DME RWY 21 approach.
RUNWAYS 28L/R: After SHAFR proceed on the ILS or LOC RWY 28R approach.

HHOOD.HHOOD5) 24305

Arrival Routes

PORTLAND INTL (PDX)
PORTLAND, OREGON

Alt:330 (FAA)