

LOC/DME I-PDX <b>110.5</b> Chan <b>42</b>	APP CRS <b>103°</b>	Rwy Idg <b>11000</b> TDZE <b>24</b> Apt Elev <b>31</b>
---	------------------------	--

# ILS RWY 10R (CAT II & III)

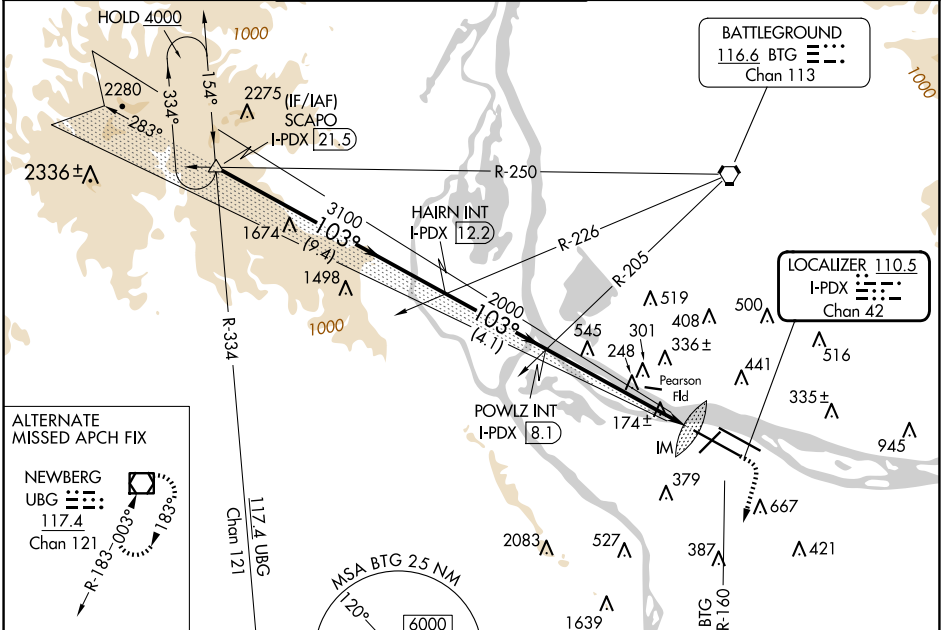
PORTLAND INTL (PDX)

Simultaneous approach authorized.  
CAT II: RVR 1000 authorized with specific OPSPEC, MSPEC, or LOA approval and use of autoland or HUD to touchdown.

ALSF-2

MISSED APPROACH: Climb to 1100 then climbing right turn to 5000 on BTG VORTAC R-160 to MULES/BTG 17.7 DME and hold, continue climb-in-hold to 5000.

D-ATIS <b>128.35</b> <b>269.9</b>	PORTLAND APP CON <b>124.35 299.2</b>	PORTLAND TOWER Rwy 10L-28R <b>118.7 257.8</b> Rwys 3-21, 10R-28L <b>123.775 251.125</b>	GND CON <b>121.9 348.6</b>	CLNC DEL <b>120.125 318.1</b>	CPDLC
---	---	---	-------------------------------	----------------------------------	-------

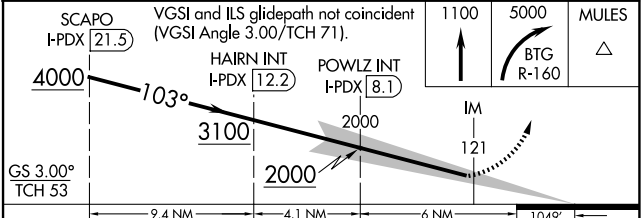
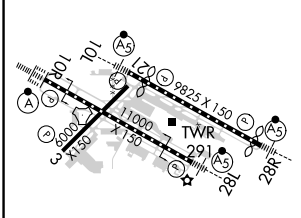


ALTERNATE MISSED APCH FIX

NEWBERG UBG 117.4 Chan 121

R-183 003° 183.1

ELEV 31	<b>D</b>	TDZE 24
---------	----------	---------



CATEGORY	A	B	C	D
S-ILS 10R	CAT II RA 107/12 100 DA 124			
S-ILS 10R	CAT III RVR 03			

**CATEGORY II & III ILS - SPECIAL AIRCREW & AIRCRAFT CERTIFICATION REQUIRED**

NW-1, 20 MAR 2025 to 17 APR 2025

NW-1, 20 MAR 2025 to 17 APR 2025