

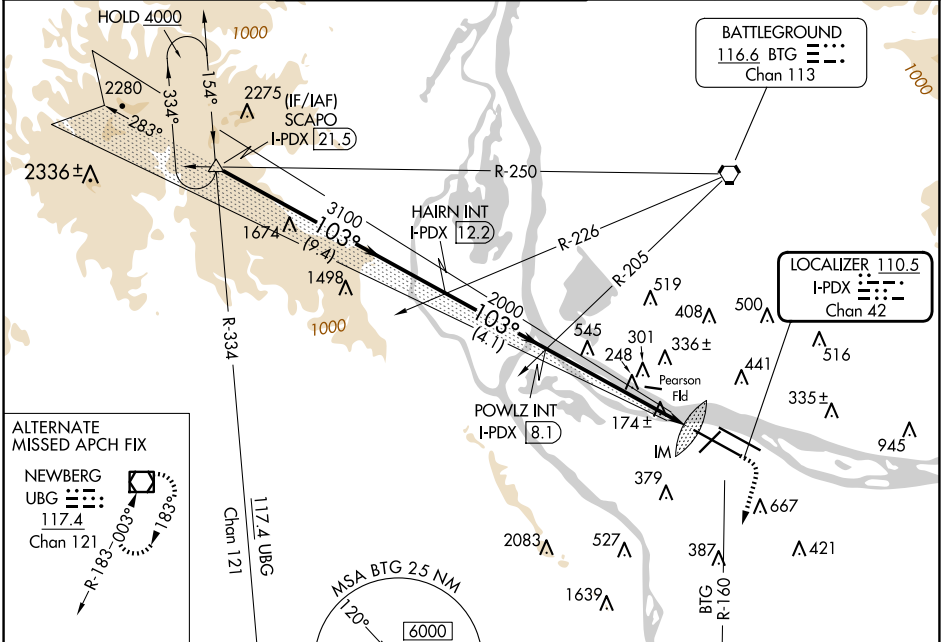
LOC/DME I-PDX <b>110.5</b> Chan <b>42</b>	APP CRS <b>103°</b>	Rwy Idg <b>11000</b> TDZE <b>24</b> Apt Elev <b>31</b>
---	------------------------	--

# ILS RWY 10R (SA CAT I)

PORTLAND INTL (PDX)

<b>Simultaneous approach authorized.</b> Requires specific OPSPEC, MSPEC, or LOA approval and use of HUD to DH.	ALSF-2	MISSED APPROACH: Climb to 1100 then climbing right turn to 5000 on BTG VORTAC R-160 to MULES/BTG 17.7 DME and hold, continue climb-in-hold to 5000.

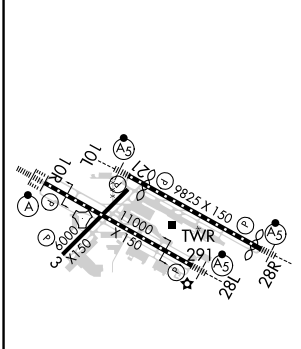
D-ATIS <b>128.35</b> <b>269.9</b>	PORTLAND APP CON <b>124.35 299.2</b>	PORTLAND TOWER Rwys 10L-28R <b>118.7 257.8</b> Rwys 3-21, 10R-28L <b>123.775 251.125</b>	GND CON <b>121.9 348.6</b>	CLNC DEL <b>120.125 318.1</b>	CPDLC
---	---	--	-------------------------------	----------------------------------	-------



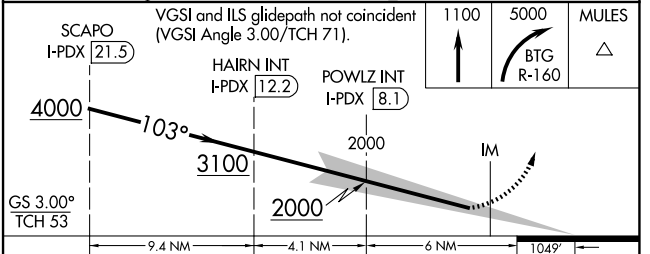
NW-1, 20 MAR 2025 to 17 APR 2025

NW-1, 20 MAR 2025 to 17 APR 2025

ELEV 31	<b>D</b>	TDZE 24
---------	----------	---------



REIL Rwys 3 and 21	TDZ/CL Rwy 10R	MIRL Rwy 3-21	HIRL Rwys 10L-28R and 10R-28L
--------------------	----------------	---------------	-------------------------------



<b>SA CATEGORY I ILS-SPECIAL AIRCREW &amp; AIRCRAFT CERTIFICATION REQUIRED</b>			
--	--	--	--