


LOC/DME I-VDG 111.3 Chan 50	APP CRS 103°	Rwy Idg TDZE Apt Elev 8535 30 31
---	------------------------	--

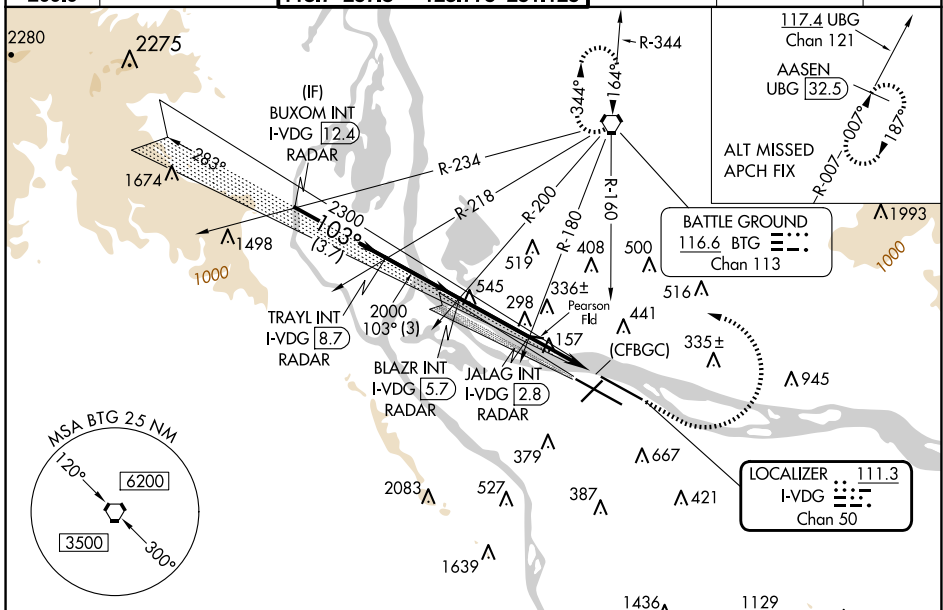
ILS or LOC RWY 10L

PORTLAND INTL (PDX)

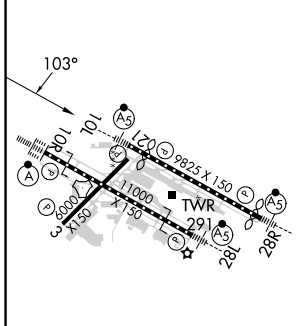
⚠ Simultaneous approach authorized with Rwy 10R.
⚠ For inoperative MALS/R, increase S-ILS visibility all Cats to RVR 4500.
 S-LOC Cat E visibility to RVR 6000. RADAR or DME required.

MALS/R

MISSED APPROACH: Climb to 800 then climbing left turn to 4200 on BTG VORTAC R-160 to BTG VORTAC and hold, continue climb-in-hold to 4200.

D-ATIS 128.35 269.9	PORTLAND APP CON 124.35 299.2	PORTLAND TOWER Rwy 10L-28R Rws 3-21, 10R-28L 118.7 257.8 123.775 251.125	GND CON 121.9 348.6	CLNC DEL 120.125 318.1	CPDLC
---	---	---	-------------------------------	----------------------------------	-------



ELEV 31	D	TDZE 30
---------	----------	---------



REIL Rws 3 and 21
 TDZ/CL Rwy 10R
 MIRL Rwy 3-21
 HIRL Rws 10L-28R and 10R-28L
 FAF to MAP 5.6 NM

Knots	60	90	120	150	180
Min:Sec	5:36	3:44	2:48	2:14	1:52

RADAR REQUIRED

	BUXOM INT I-VDG [12.4] RADAR	TRAYL INT I-VDG [8.7] RADAR	BLAZR INT I-VDG [5.7] RADAR	JALAG INT I-VDG [2.8] RADAR	BTG BTG R-160
3000	2300	2000	*1100		
	3.7 NM	3 NM	2.8 NM	2.7 NM	0.5
CATEGORY	A	B	C	D	E
S-ILS 10L	293/24		263 (300-½)		
S-LOC 10L	420/24 390 (400-½)		420/35 390 (400-¾)		
C CIRCLING	720-1 689 (700-1)	760-1 729 (800-1)	1060-3	1029 (1100-3)	1140-3 1109 (1200-3)

NW-1, 20 MAR 2025 to 17 APR 2025

NW-1, 20 MAR 2025 to 17 APR 2025