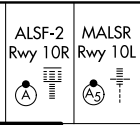


LOC/DME I-PDX	APP CRS	Rwy ldg	10R	10L
110.5	103°	TDZE	11000	8535
Chan 42		Apt Elev	24	30
			31	31

ILS or LOC RWY 10R

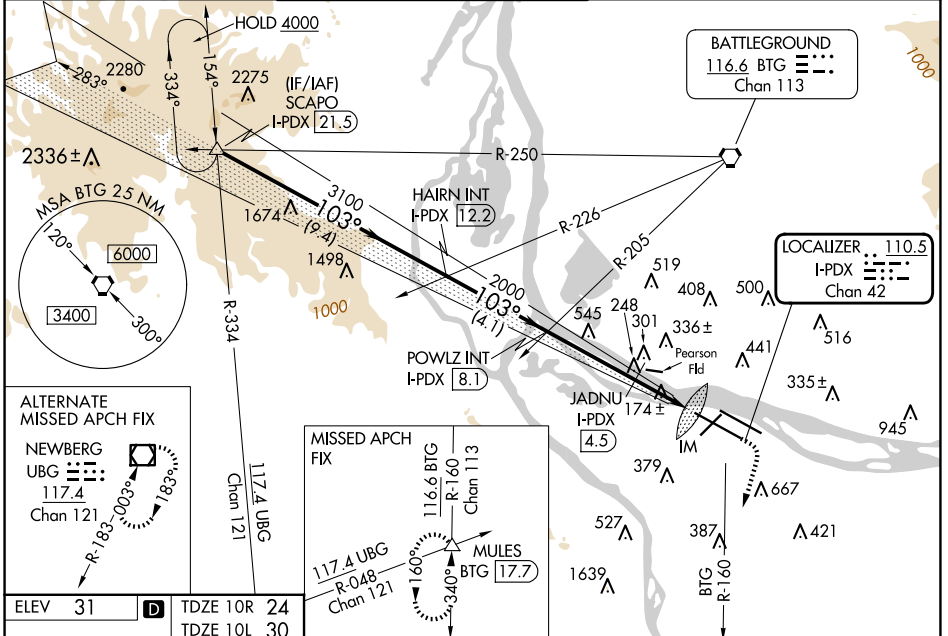
PORTLAND INTL (PDX)

⚠ Simultaneous approach authorized. Inop table does not apply to Sidestep LOC 10L. For inop ALS increase S-ILS 10R Cat E visibility to RVR 4000. For inop ALS increase S-LOC 10R Cat C/D/E visibility to 2½ SM. For inop ALS increase JADNU fix minimums S-LOC 10R Cat C/D/E visibility to RVR 6000. Sidestep NA until passing JADNU.

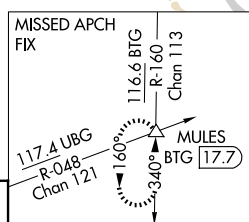


MISSED APPROACH: Climb to 1100 then climbing right turn to 5000 on BTG VORTAC R-160 to MULES/ BTG 17.7 DME and hold, continue climb-in-hold to 5000.

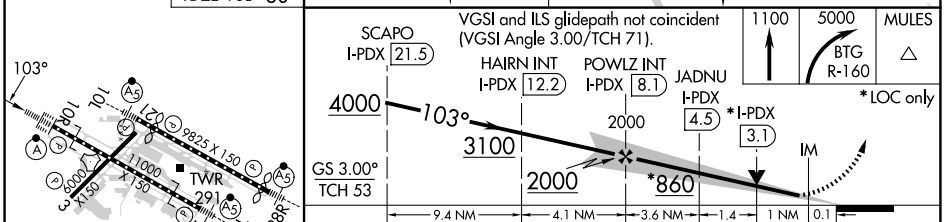
D-ATIS	PORTLAND APP CON	PORTLAND TOWER		GND CON	CINCL DEL	CPDLC
128.35	124.35 299.2	Rwy 10L-28R	Rwys 3-21, 10R-28L	121.9 348.6	120.125 318.1	
269.9		118.7 257.8	123.775 251.125			



ALTERNATE MISSED APCH FIX
NEWBERG
 UBG 117.4
 Chan 121



ELEV 31	D	TDZE 10R 24	TDZE 10L 30
---------	----------	-------------	-------------



REIL Rws 3 and 21	TDZ/CL Rwy 10R	MIRL Rwy 3-21	HIRL Rws 10L-28R and 10R-28L	FAF to MAP 6 NM	
Knots	60	90	120	150	180
Min:Sec	6:00	4:00	3:00	2:24	2:00

SCAPO I-PDX [21.5]	HAIRN INT I-PDX [12.2]	POWLZ INT I-PDX [8.1]	JADNU I-PDX [4.5]	*I-PDX [3.1]	*LOC only
4000	3100	2000	2000	1100	5000
S-ILS 10R			224/18 200 (200-½)		
S-LOC 10R		860/24	860/40	860-1½ 836 (900-1½)	
CIRCLING		860-1¼	829 (900-1¼)	1060-3	1029 (1100-3) 1140-3 1109 (1200-3)
JADNU FIX MINIMUMS					
S-LOC 10R		440/24	416 (500-½)	440/40 416 (500-¾)	
SIDESTEP 10L		800-1	800-1¼	800-2½	770 (800-2½) 800-2¾ 770 (800-2¾)

NW-1, 20 MAR 2025 to 17 APR 2025

NW-1, 20 MAR 2025 to 17 APR 2025