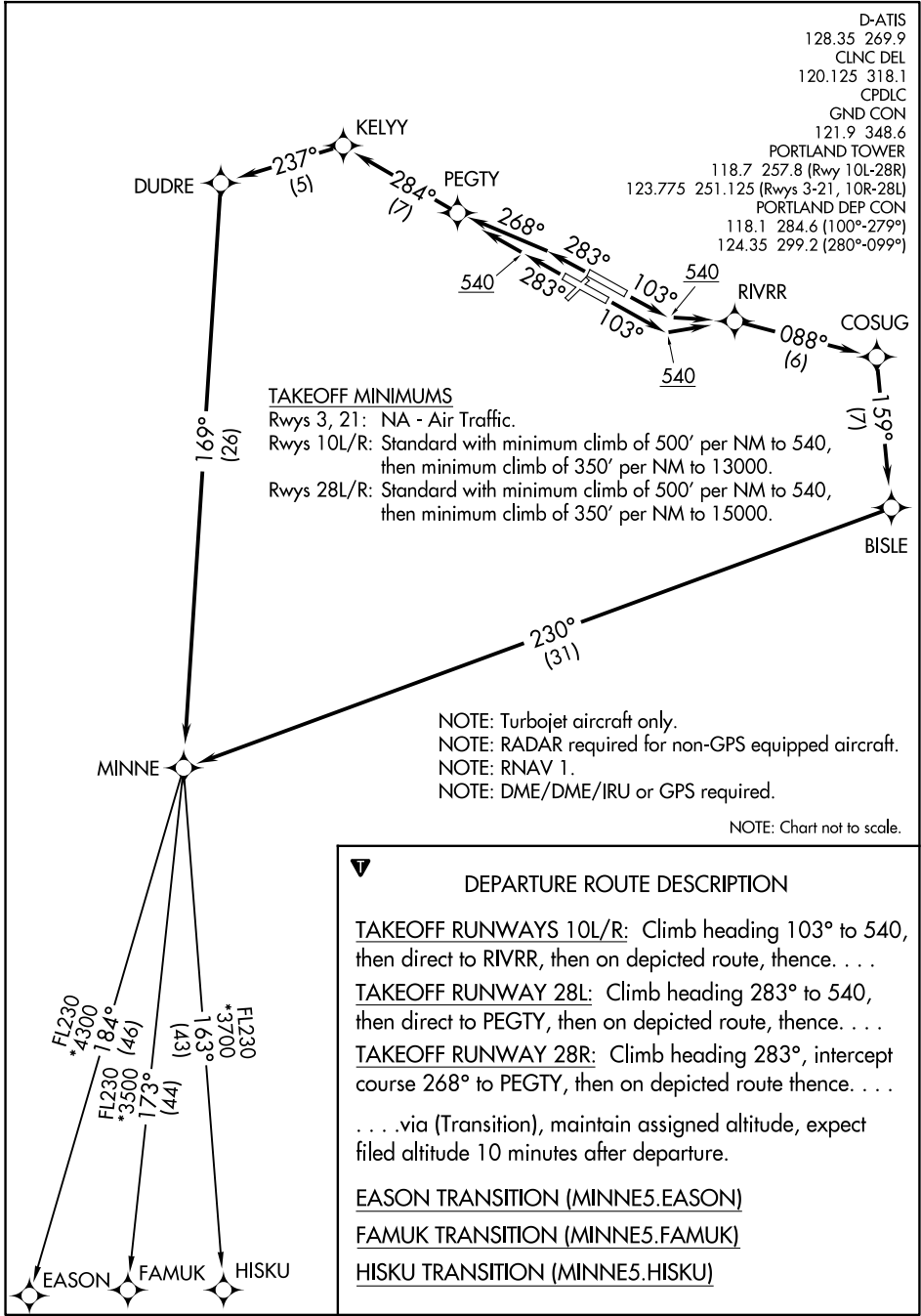


NW-1, 20 MAR 2025 to 17 APR 2025

NW-1, 20 MAR 2025 to 17 APR 2025



D-ATIS  
128.35 269.9  
CLNC DEL  
120.125 318.1  
CPDLC  
GND CON  
121.9 348.6  
PORTLAND TOWER  
118.7 257.8 (Rwy 10L-28R)  
123.775 251.125 (Rwys 3-21, 10R-28L)  
PORTLAND DEP CON  
118.1 284.6 (100°-279°)  
124.35 299.2 (280°-099°)

**TAKEOFF MINIMUMS**

Rwys 3, 21: NA - Air Traffic.  
Rwys 10L/R: Standard with minimum climb of 500' per NM to 540, then minimum climb of 350' per NM to 13000.  
Rwys 28L/R: Standard with minimum climb of 500' per NM to 540, then minimum climb of 350' per NM to 15000.

NOTE: Turbojet aircraft only.  
NOTE: RADAR required for non-GPS equipped aircraft.  
NOTE: RNAV 1.  
NOTE: DME/DME/IRU or GPS required.

NOTE: Chart not to scale.

**DEPARTURE ROUTE DESCRIPTION**

TAKEOFF RUNWAYS 10L/R: Climb heading 103° to 540, then direct to RIVRR, then on depicted route, thence. . .

TAKEOFF RUNWAY 28L: Climb heading 283° to 540, then direct to PEGTY, then on depicted route, thence. . .

TAKEOFF RUNWAY 28R: Climb heading 283°, intercept course 268° to PEGTY, then on depicted route thence. . .

. . . via (Transition), maintain assigned altitude, expect filed altitude 10 minutes after departure.

EASON TRANSITION (MINNE5.EASON)

FAMUK TRANSITION (MINNE5.FAMUK)

HISKU TRANSITION (MINNE5.HISKU)