

APP CRS	Rwy Idg	11000
283°	TDZE	23
	Apt Elev	31

RNAV (RNP) Z RWY 28L

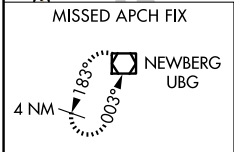
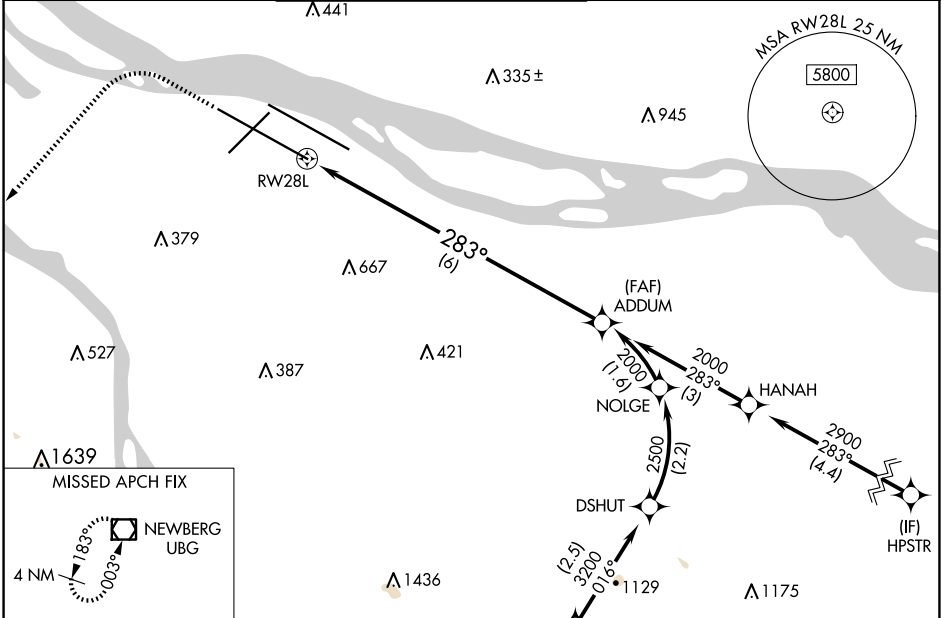
PORTLAND INTL (PDX)

RNP AR APCH - GPS. Authorization required. From DSHUT: RF.

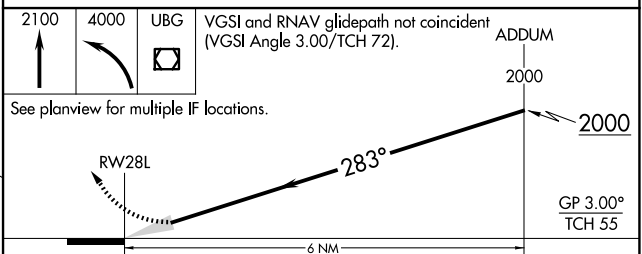
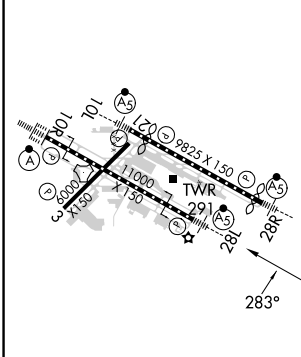
For uncompensated Baro-VNAV systems, procedure NA below -5°C or above 54°C. Simultaneous approach authorized.

MALS/R MISSED APPROACH: Climb to 2100 then climbing left turn to 4000 direct UBG VOR/DME and hold.

D-ATIS 128.35 269.9	PORTLAND APP CON 124.35 299.2	PORTLAND TOWER Rwy 10L-28R 118.7 257.8	Rwys 3-21, 10R-28L 123.775 251.125	GND CON 121.9 348.6	CLNC DEL 120.125 318.1	CPDLC
---	---	---	--	-------------------------------	----------------------------------	-------



ELEV 31	D	TDZE 23
---------	----------	---------



CATEGORY	A	B	C	D
RNP 0.30 DA	399/60 376 (400-1¼)			

AUTHORIZATION REQUIRED

NW-1, 20 MAR 2025 to 17 APR 2025

NW-1, 20 MAR 2025 to 17 APR 2025