

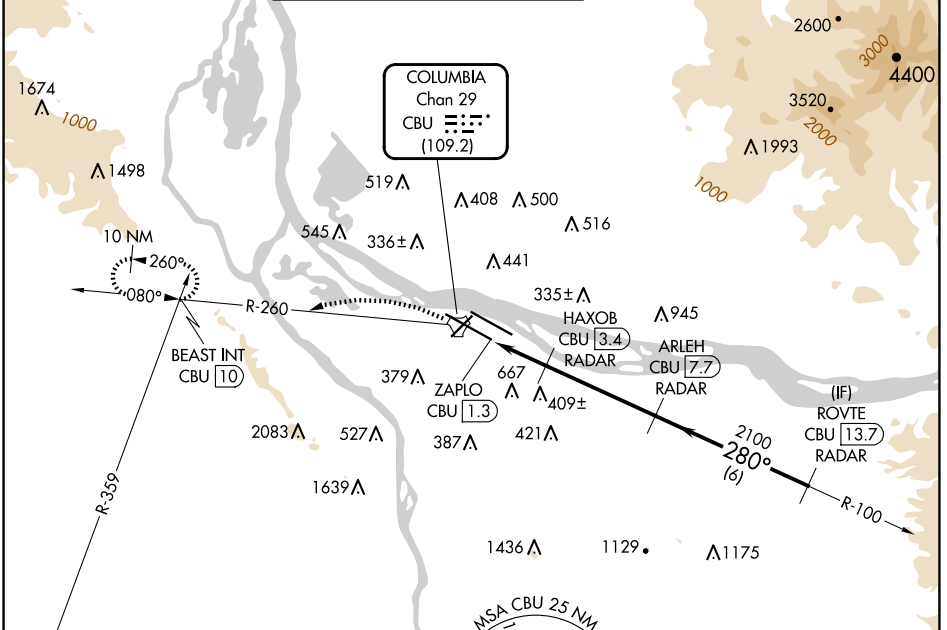
TACAN CBU Chan 29 (109.2)	APP CRS 280°	Rwy ldg TDZE 23 Apt Elev 31
-----------------------------------------------	------------------------	-------------------------------------------------

TACAN RWY 28L

PORTLAND INTL (PDX)

RADAR required for procedure entry.		MALSR	MISSED APPROACH: Climbing left turn to 4000 on CBU TACAN R-260 to BEAST INT/CBU 10 DME and hold, continue climb-in-hold to 4000.
For inop ALS, increase S-28L Cat C/D/E visibility to 1 3/4 SM.			

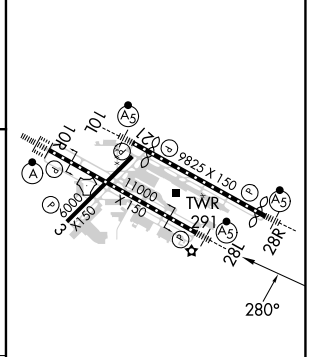
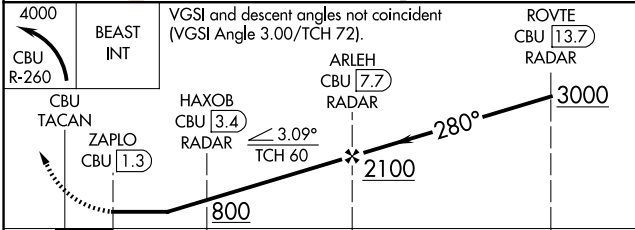
D-ATIS 128.35 269.9	PORTLAND APP CON 124.35 299.2	PORTLAND TOWER Rwy 10L-28R 118.7 257.8 Rwys 3-21, 10R-28L 123.775 251.125	GND CON 121.9 348.6	CLNC DEL 120.125 318.1	CPDLC
-----------------------------------------	-----------------------------------------	-----------------------------------------------------------------------------------------------	-------------------------------	----------------------------------	-------



NW-1, 20 MAR 2025 to 17 APR 2025

NW-1, 20 MAR 2025 to 17 APR 2025

ELEV 31	TDZE 23
---------	---------



CATEGORY	A	B	C	D	E
S-28L	660/24	637 (700-1/2)	660-1 3/8	637 (700-1 3/8)	
CIRCLING	740-1 709 (800-1)	760-1 729 (800-1)	1060-3	1029 (1100-3)	1140-3 1109 (1200-3)

REIL Rwys 3 and 21
TDZ/CL Rwy 10R
MIRL Rwy 3-21
HIRL Rwys 10L-28R and 10R-28L