

LOC I-MCU 110.7	APP CRS 044°	Rwy ldg TDZE Apt Elev	8001 535 559
---------------------------	------------------------	-----------------------------	---

ILS RWY 4 (SA CAT I)

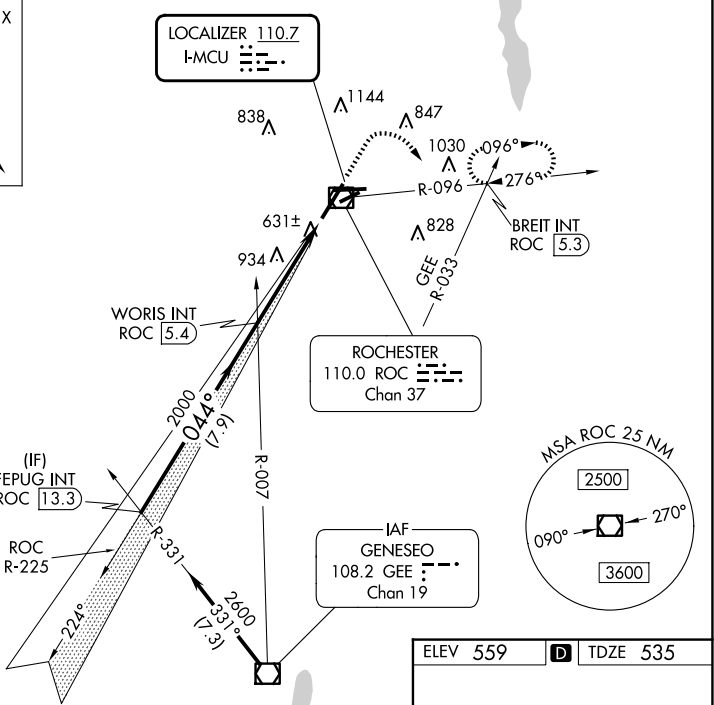
FREDERICK DOUGLASS/GREATER ROCHESTER INTL (ROC)

Requires specific OPSPEC, MSPEC, or LOA approval and use of the HUD to DA.	ALSF-2	MISSED APPROACH: Climb to 1100 then climbing right turn to 3000 on heading 135° and ROC VOR/DME R-096 to BREIT INT/ROC 5.3 DME and hold, continue climb-in-hold to 3000.

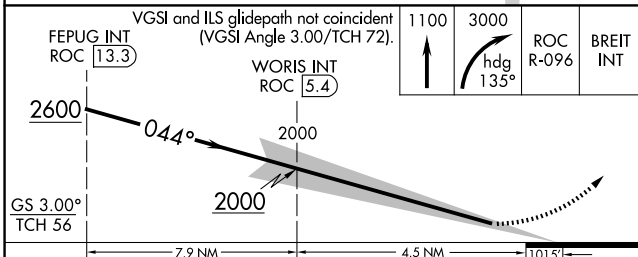
ATIS 124.825	ROCHESTER APP CON 119.55 269.6	ROCHESTER TOWER 118.3 254.3	GND CON 121.7	CLNC DEL 118.8 343.65
------------------------	--	---------------------------------------	-------------------------	---------------------------------

ALTERNATE MISSED APCH FIX

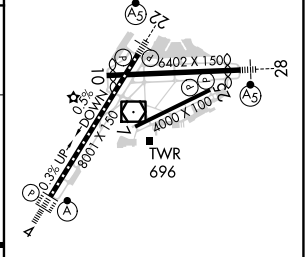
GENESECO
GEE
108.2
Chan 19



Procedure NA for arrivals at GEE VOR/DME on airway radials 287 CW 018.



ELEV 559	D TDZE 535
----------	-------------------



CATEGORY	A	B	C	D
S-ILS 4	RA 157/14		150 DA 685	

SA CATEGORY I ILS - SPECIAL AIRCREW & AIRCRAFT CERTIFICATION REQUIRED

TDZ/CL Rwy 4
REIL Rwy 7, 10 and 25
MIRL Rwy 7-25
HIRL Rwy 10-28 and 4-22

ILS RWY 4 (SA CAT I)

NE-2, 20 MAR 2025 to 17 APR 2025

NE-2, 20 MAR 2025 to 17 APR 2025